



Theobalds Road, Cuffley



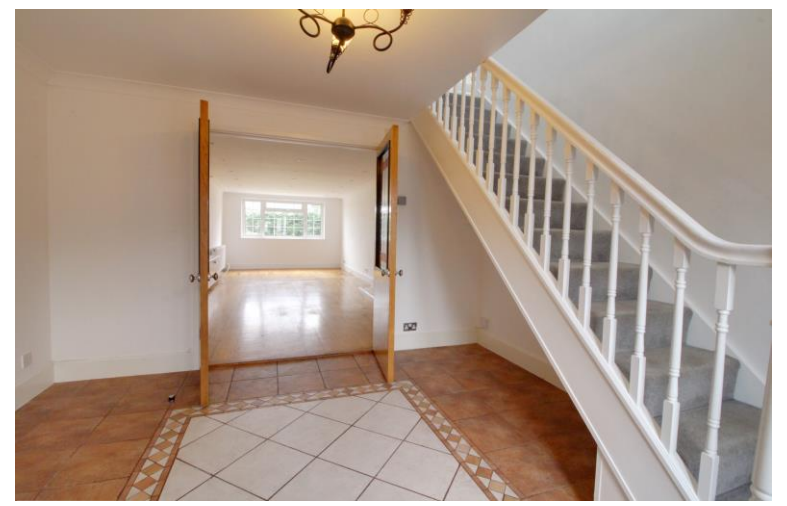
- CHAIN FREE
- FOUR BEDROOMS
- 2 BATHROOMS
- FLAT ROAD
- WALKING DISTANCE TO VILLAGE AND STATION
- GARAGE SPACE
- OFF STREET PARKING



**Theobalds Road**  
Cuffley EN6 4HL

CHAIN FREE. Set on a flat road close to Cuffley village and train station you will find this 4 bedroom family home. The property shows in good decorative order throughout and offers versatile accommodation. Downstairs there is a large entrance hallway, living room/dining room, kitchen breakfast room, bathroom, bedroom 4 and utility area. Upstairs there are 3 bedrooms with a large family bathroom with shower. Rear garden which is mainly laid to lawn, garage space and off street parking for several cars. CHAIN FREE

The tree lined Theobalds Road runs between Northaw Road East and Station Road and is therefore within easy reach of Cuffley Village with its excellent selection of local shops, restaurants, as well as a mainline train station with direct links into London's Moorgate, Finsbury Park and Highbury & Islington.



**FLOOR PLAN TO FOLLOW**

Score	Energy rating	Current	Potential
92+	A		
81-91	B		83 B
69-80	C		
55-68	D	64 D	
39-54	E		
21-38	F		
1-20	G		