



Rusholme Grove, SE19
£375,000

0208 702 9333
pedderproperty.com

pedder



In general

- Two bedroom split level apartment
- Recently modernised throughout
- Modern kitchen with a breakfast bar
- Quiet location
- Contemporary bathroom with a skylight
- Leafy communal grounds
- Tastefully finished
- No onward chain

In detail

A completely upgraded two bedroom split level apartment forming a quiet, centrally located development nearby Gipsy Hill station.

This contemporary property has been tastefully finished by the current owners to offer a comfortable new home which could make for an ideal first purchase to immediately enjoy. The arrangement over two floors adds to a sense of space and is an ideal divide of living and sleeping areas. A sociably open-plan kitchen boasts a sit-up breakfast bar and white high gloss units, whilst large windows allow for plenty of natural light. There is abundance of fitted storage, a welcoming entrance hall, a recently fitted bathroom with a rainfall shower, and two well proportioned bedrooms. Externally there are well maintained leafy communal grounds and residents parking.

Rusholme Grove is positioned just off of the prestigious Dulwich Wood Avenue and enables ease of access to everything that central Crystal Palace has to offer, as well as Crystal Palace Park and excellent transport links.

No onward chain.

EPC: C | Council Tax Band: C | Lease: 140 years remaining | SC: £95pm | GR: Peppercorn | BI: Incl in SC



Floorplan

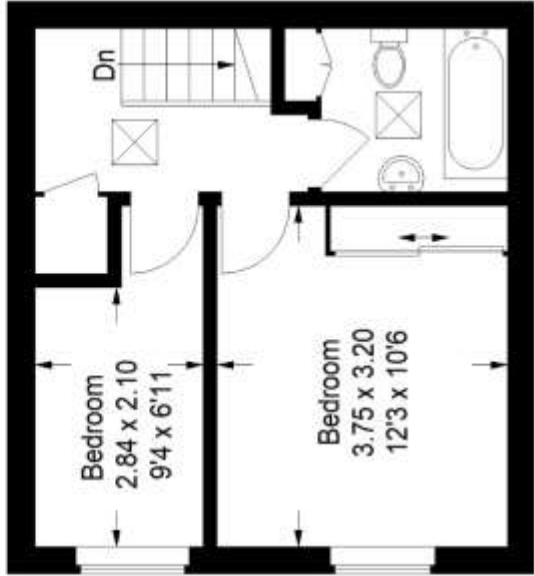
Rusholme Grove SE19

Approximate Gross Internal Area

Ground Floor = 30.0 sq m / 323 sq ft

First Floor = 29.0 sq m / 312 sq ft

Total = 59.0 sq m / 635 sq ft



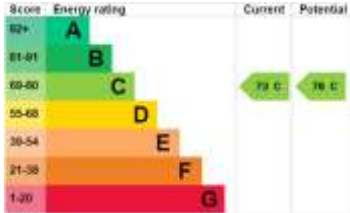
First Floor



Ground Floor

Copyright www.pedderproperty.com © 2023

These plans are for representation purposes only as defined by RICS - Code of Measuring Practice. Not drawn to Scale. Windows and door openings are approximate. Please check all dimensions, shapes and compass bearings before making any decisions reliant upon them.



Pedder Property Ltd trading as Pedder for themselves and for the vendor/landlord of this property whose agents they are, give notice that (1) these particulars do not constitute any part of an offer or contract, (2) all statements contained within these particulars are made without responsibility on the part of Pedder or the vendor/landlord, (3) whilst made in good faith, none of the statements contained within these particulars are to be relied upon as a statement of representation or fact, (4) any intending purchaser/tenant must satisfy him/herself by inspection or otherwise as to the correctness of each of the statements contained within these particulars, (5) the vendor/landlord does not make or give either Pedder or any person in their employment any authority to make or give representation or warranty whatsoever in relation to this property.