



Meadow Place Rectory Road, Lyng
£475,000

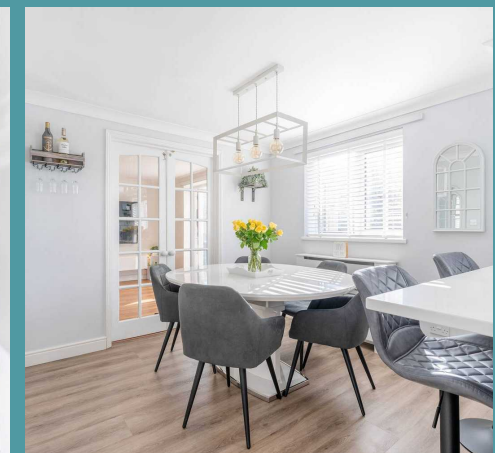
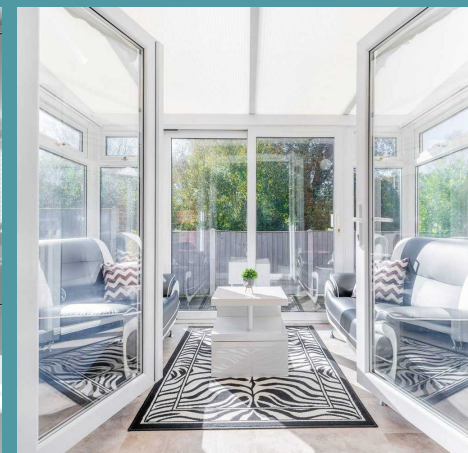
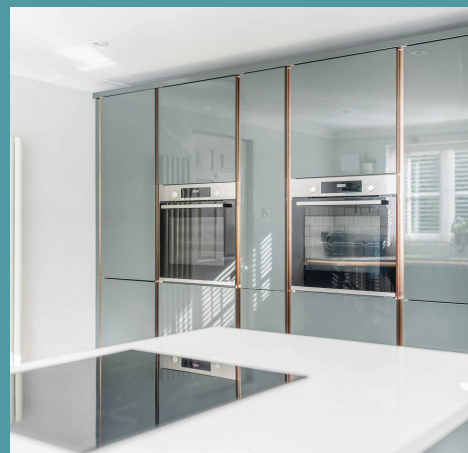
Meadow Place Rectory Road

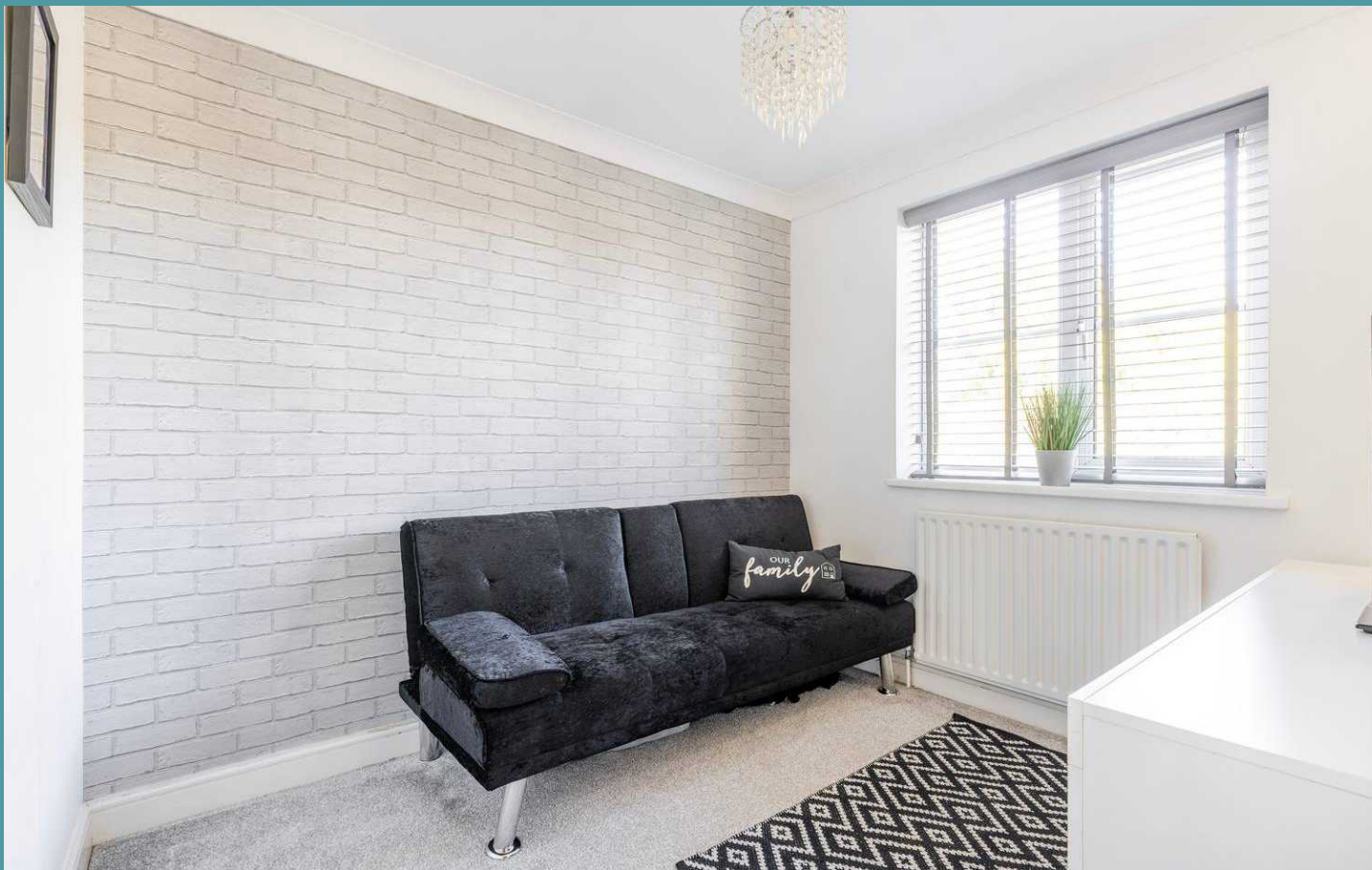
Lyng, Norwich

Step into a refined four-bedroom home that has been beautifully modernised, showcasing the current vendors' taste in decor. This spacious residence features a well-designed layout with versatile reception rooms, a welcoming sitting room complete with a log-burning stove and a conservatory that boasts panoramic views. The stylish kitchen, highlighted by rose gold accents, flows effortlessly into the dining area, while a practical utility room adds convenience to everyday living. Upstairs, a generous landing connects to a master suite with an ensuite, three additional bedrooms and a family bathroom, all set within a large wrap-around garden that offers ample outdoor space, garage access, and plenty of off-road parking.

The Location

Positioned in the charming village of Lyng, Rectory Road offers the perfect blend of rural tranquility and convenience. Surrounded by picturesque countryside, the property is just 1 mile from Elsing, which features a village shop and the cozy pub, The Crown. The bustling market town of Reepham, located 3 miles away, provides additional shopping options, including a Co-op supermarket and various cafes. Families will appreciate the well-regarded schools nearby, such as Reepham High School and Lyng Primary School. Lyng is well-connected to the vibrant city of Norwich, approximately 13 miles to the south, which offers a wealth of cultural attractions and dining options. The nearby A47 facilitates easy access to regional towns, while local bus services connect residents to surrounding areas. For outdoor enthusiasts, the countryside boasts numerous walking and cycling trails, allowing you to fully enjoy rural living without sacrificing modern conveniences.





Meadow Place Rectory Road

Lyng, Norwich

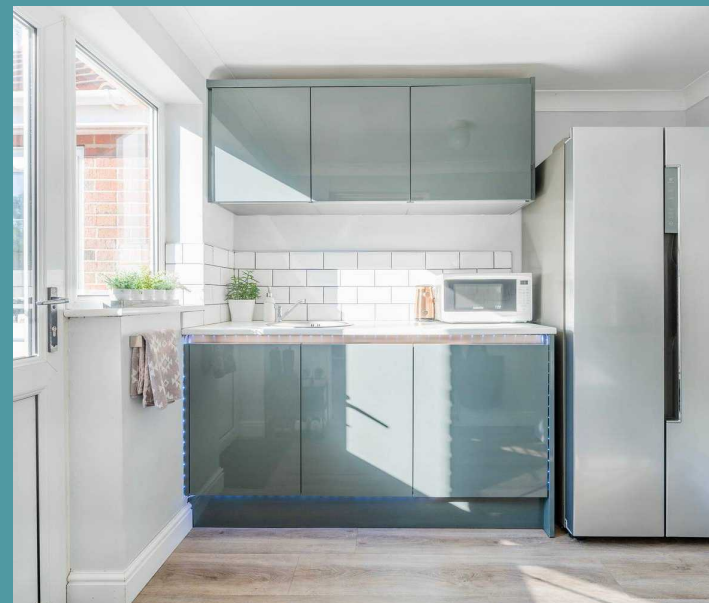
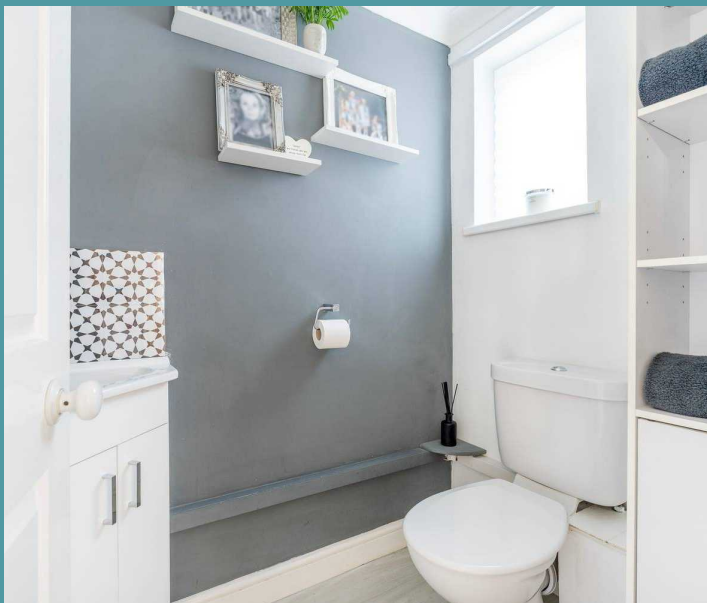
Rectory Road

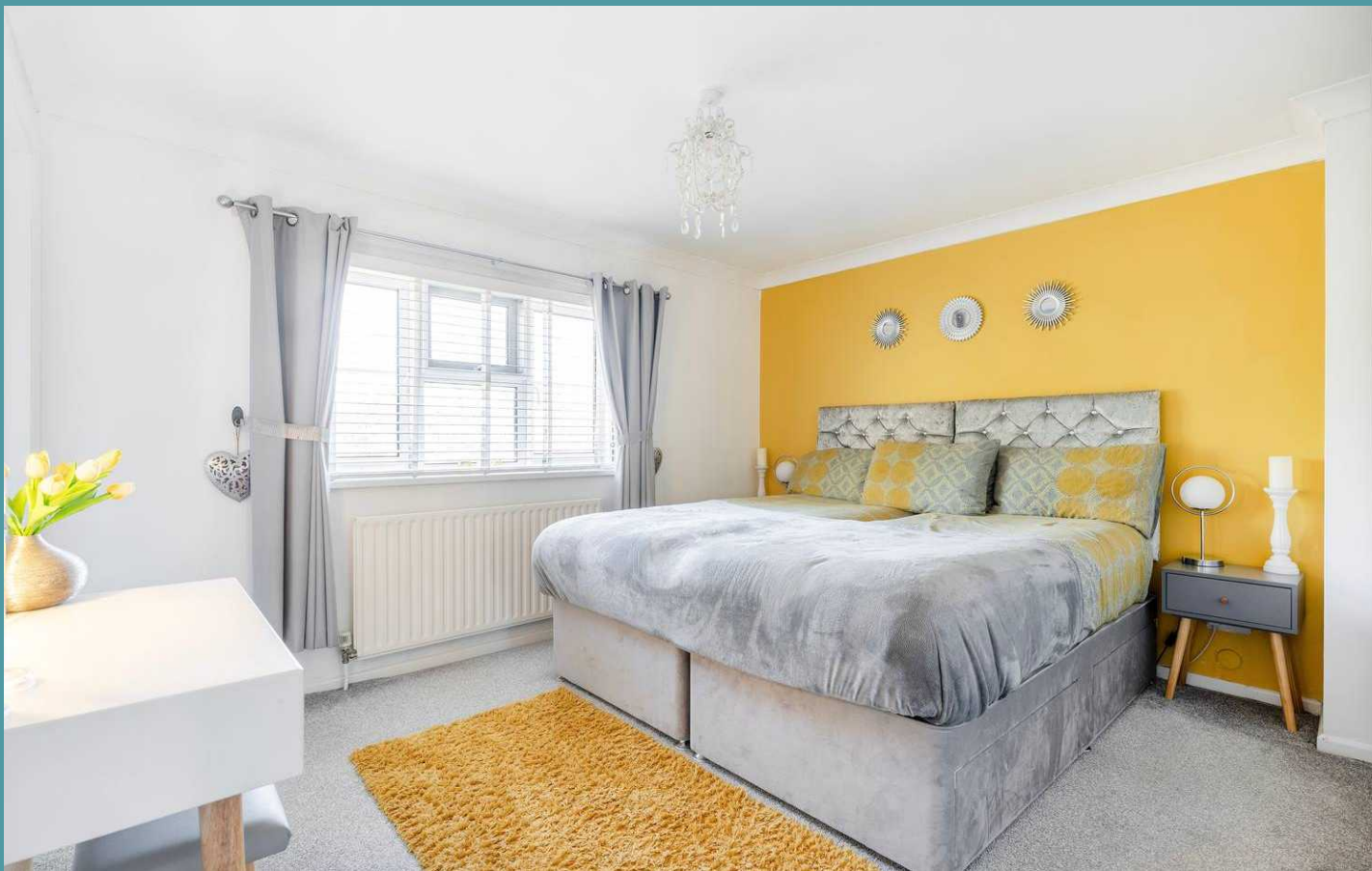
Step into a world of elegance in this beautifully modernised four-bedroom home, where every detail reflects the tasteful decor chosen by the current vendors since purchasing.

The spacious entrance welcomes you into a thoughtfully designed layout, featuring reception rooms that branch off into a versatile study and an additional room that can easily serve as a fifth bedroom and a conveniently located WC.

The expansive sitting room stands as the heart of the home, complete with a focal log-burning stove surrounded by decorative mosaic tiles, this inviting space is bathed in natural light, via the French-style doors that open into a conservatory.

Here, you can enjoy an extension of your living space while taking in the panoramic views that this property has to offer.



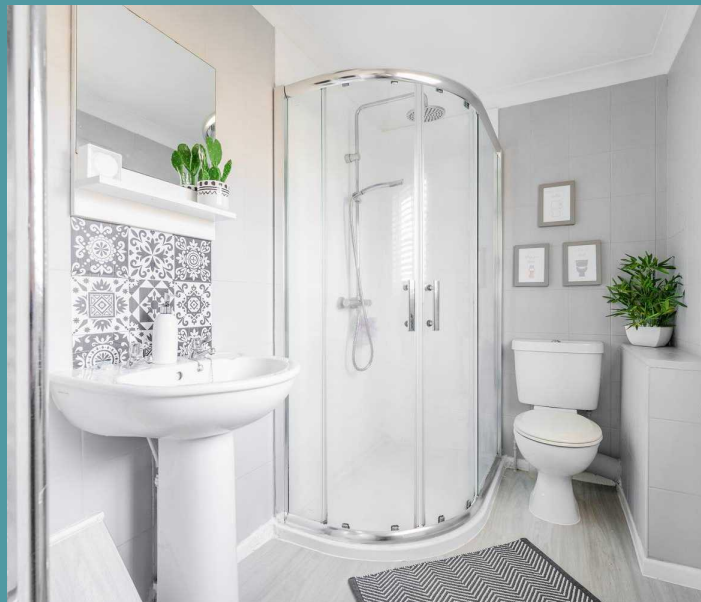
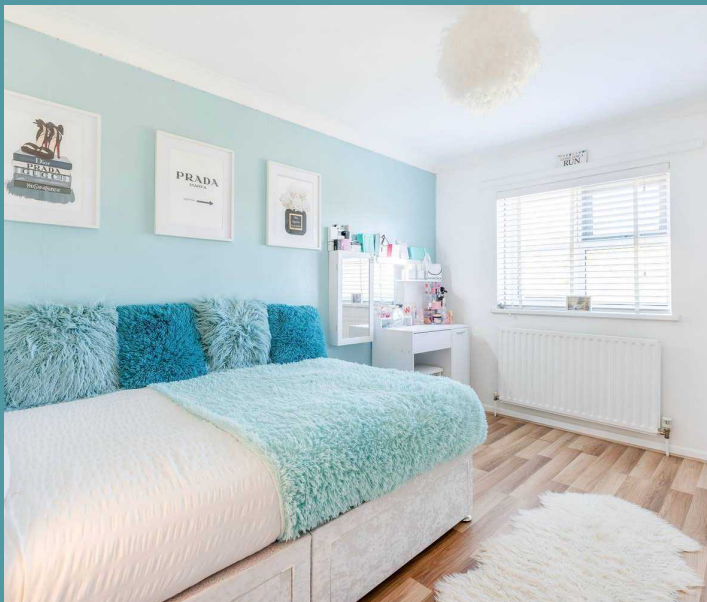


Meadow Place Rectory Road

Lyng, Norwich

The vendors have truly opened up the heart of the home, integrating the sitting room through additional French doors into stylish dining area and a high-spec kitchen that is both functional and visually appealing. The kitchen features a beautiful gloss finish adorned with rose gold accents and under-storage plinth lighting, creating a sophisticated atmosphere. A breakfast nook provides an ideal spot for informal dining, making it easy to enjoy leisurely mornings. An adjoining utility room offers additional space for appliances and laundry, ensuring that the flow of daily life is as effortless as it is enjoyable.

Ascend to the upper floor, where a large landing grants access to all four bedrooms, each thoughtfully designed to provide comfort. The master suite boasts an ensuite shower room, creating a private setting for relaxation. The three remaining bedrooms are generously sized and share a well-appointed family bathroom, ensuring that family living is both convenient and stylish. Outside, the property features a large wrap-around garden that perfectly balances patio and lawn areas, ideal for outdoor entertaining or simply enjoying the fresh air. Access to the garage is easily facilitated from both the rear and front of the property, while the private driveway offers plentiful off-road parking.





Meadow Place Rectory Road

Lyng, Norwich

Agents Note

Sold Freehold

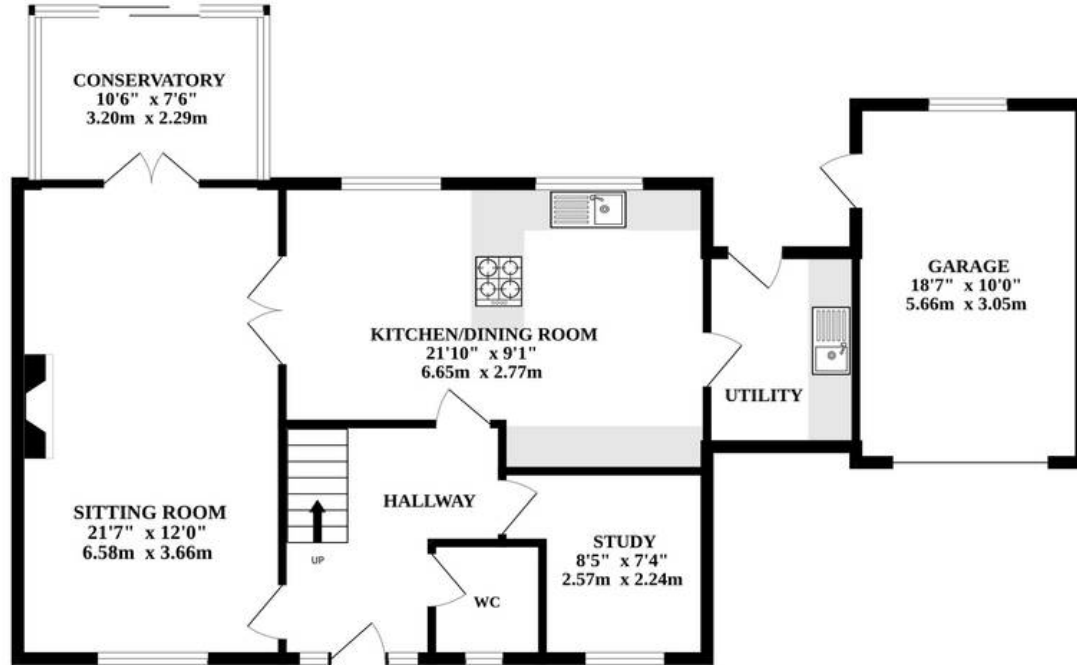
Connected to mains water, electricity and drainage.

Oil Fired Heating

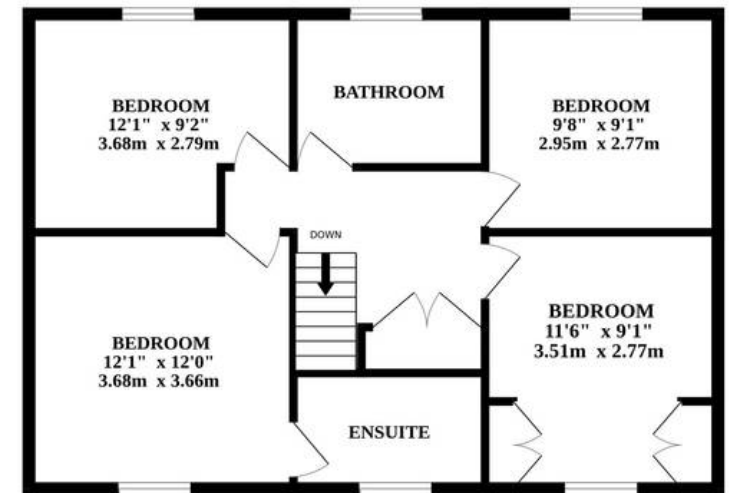
- Beautifully modernised interiors showcasing elegant decor throughout
- Spacious entrance that welcomes you into a thoughtfully designed layout, offering seamless flow between room
- Bright conservatory with large windows that provide stunning panoramic views
- Inviting sitting room featuring a cosy log-burning stove framed by decorative mosaic tiles, creating a warm ambiance
- High-spec kitchen showcasing a sleek gloss finish, rose gold accents, and under-storage plinth lighting
- Four well-proportioned bedrooms, each designed to maximise space and light, perfect for family, guests, or home office use
- WC, family bathroom and ensuite shower room to the master bedroom
- Expansive wrap-around garden that balances beautifully landscaped patio and lawn areas, ideal for outdoor entertaining
- Plentiful off-road parking and garage



GROUND FLOOR



1ST FLOOR



MEADOW PLACE, LYNG

Whilst every attempt has been made to ensure the accuracy of the floorplan contained here, measurements of doors, windows, rooms and any other items are approximate and no responsibility is taken for any error, omission or mis-statement. This plan is for illustrative purposes only and should be used as such by any prospective purchaser. The services, systems and appliances shown have not been tested and no guarantee as to their operability or efficiency can be given.
Made with Metropix ©2024

