



Worcester Close, SE20 | £315,000

02087029333

crystalpalace@pedderproperty.com

pedder
We live local



In General

- Popular low-rise development
- No onward chain
- Residents parking
- Quiet location
- Ground floor
- Double doors to outside
- Nearby multiple transport links

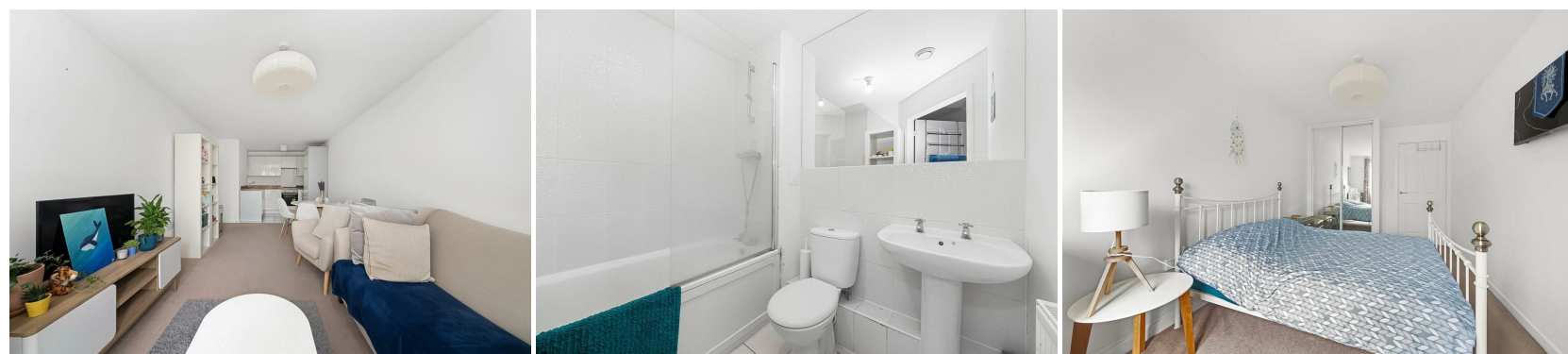
In Detail

A well presented and spacious one bedroom ground floor purpose built apartment forming a popular executive development nearby a number of transport links and Crystal Palace Park.

This fresh and neutrally decorated property is available for sale with no chain and benefits from a 26ft living space with double doors to a patio area and communal grounds. The reception room is socially open to a modern kitchen with integrated appliances, whilst the bedroom extends to 16ft and has fitted wardrobe storage. Further points to note include residents parking, well maintained common parts, and secure entry.

Worcester Close is a quiet residential location within easy reach of Anerley, Crystal Palace, and Penge West rail links. There are various amenities within close proximity at Anerley Parade, or a multiple shopping and leisure options at the Crystal Palace Triangle.

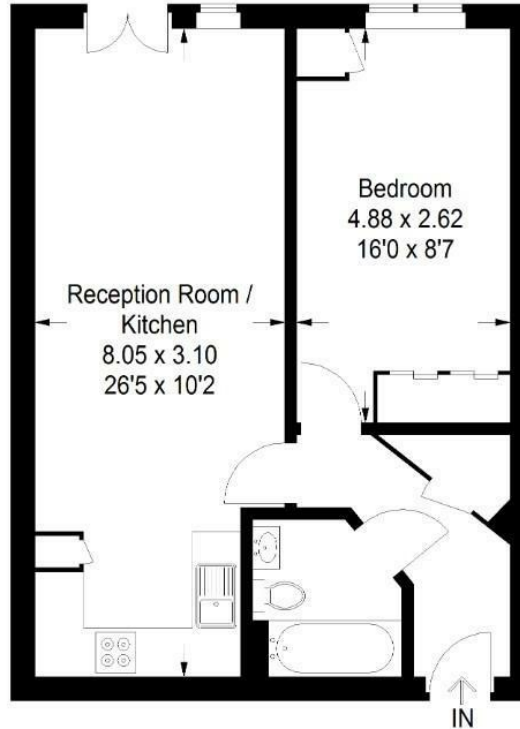
EPC: | Council Tax Band: C | Lease: 111 years remaining | SC: £3,000 pa | GR: £250 pa | Buildings Insurance: TBC



Floorplan

Carfax House, SE20

Approximate Gross Internal Area
47.9 sq m / 516 sq ft



Ground Floor

Copyright www.pedderproperty.com © 2025
These plans are for representation purposes only as defined by RICS - Code of Measuring Practice. Not drawn to Scale. Windows and door openings are approximate. Please check all dimensions, shapes and compass bearings before making any decisions reliant upon them.

Energy Efficiency Rating	Current	Potential
Very energy efficient - lower running costs		
102 plus) A		
81-101) B		
69-80) C		
55-68) D		
39-54) E		
21-38) F		
1-20) G		
Not energy efficient - higher running costs		
England & Wales	EU Directive 2002/91/EC	

Pedder Property Ltd trading as Pedder for themselves and for the vendor/landlord of this property whose agents they are, give notice that (1) these particulars do not constitute any part of an offer or contract, (2) all statements contained within these particulars are made without responsibility on the part of Pedder or the vendor/landlord, (3) whilst made in good faith, none of the statements contained within these particulars are to be relied upon as a statement of representation or fact, (4) any intending purchaser/tenant must satisfy him/herself by inspection or otherwise as to the correctness of each of the statements contained within these particulars, (5) the vendor/landlord does not make or give either Pedder or any person in their employment any authority to make or give representation or warranty whatsoever in relation to this property.