

Dukes Avenue, London, W4 2AA

Guide Price £3,250,000

**WHITMAN & CO.**

SALES · LETTINGS · COMMERCIAL



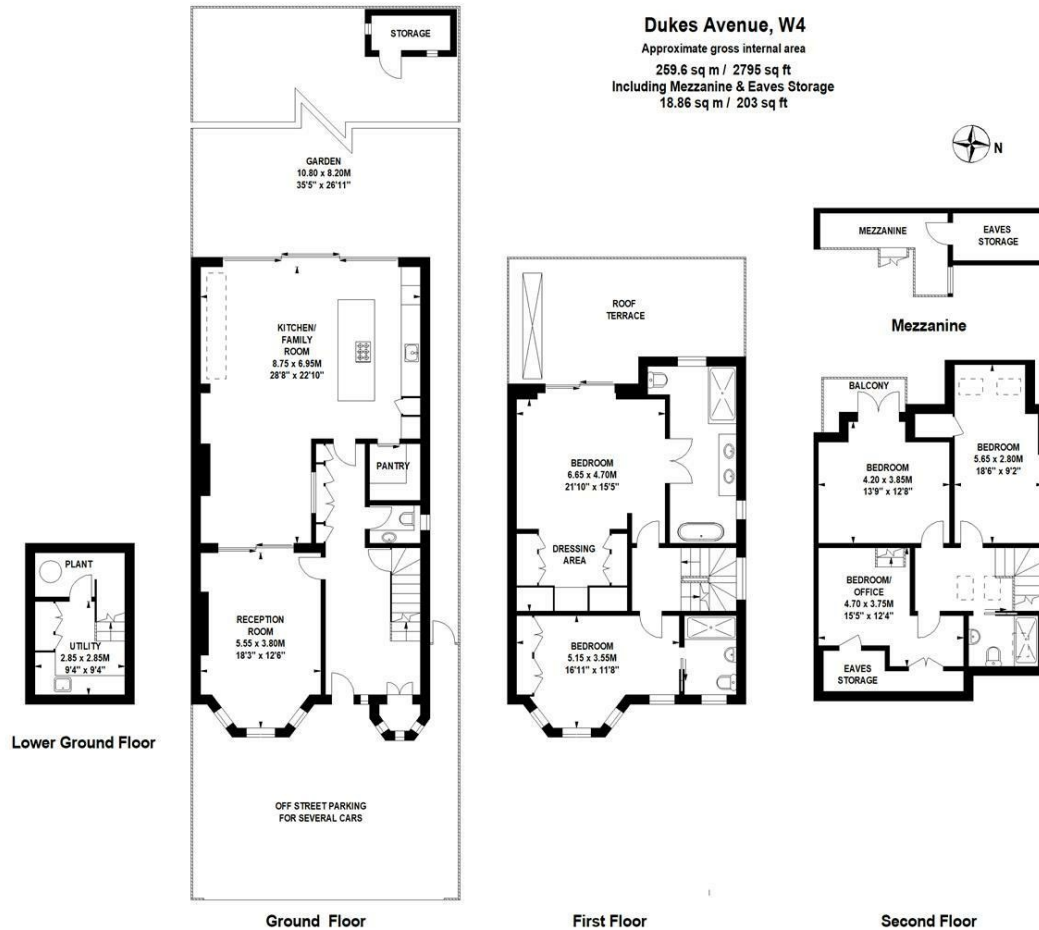
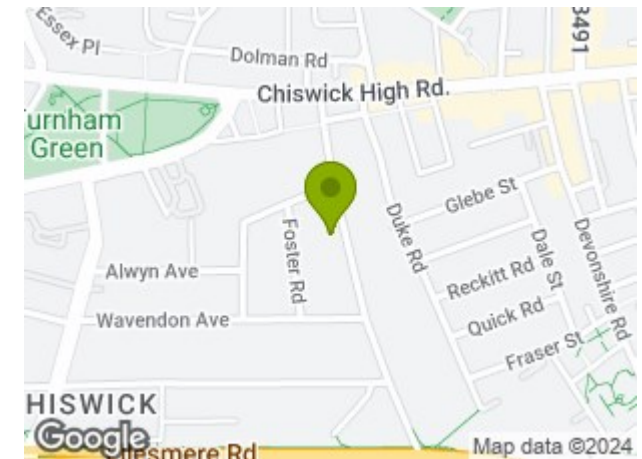
- Double Fronted
- Semi-Detached
- Newly Refurbished
- Off-Street Parking for Two Cars
- Sought After Residential Road
- No Chain

Tenure - Freehold  
Local Authority - Hounslow  
Council Tax - Band H

## THE PROPERTY

Rarely available, this double fronted, five bedroom Edwardian family house has undergone a meticulous schedule of modernisation by the current owners to now offer an excellent balance of living and entertaining space in this prestigious tree lined residential road. This impressive house comprises a luxury master suite, four further bedrooms, two further bathrooms, a large entrance hall, drawing room, 28' family room, bespoke fully integrated kitchen, pantry, utility room, cloakroom, private 35' west facing landscaped garden, along with a large west-facing roof terrace and off-street parking for two cars. Ideally located within close proximity of Turnham Green Tube Station and the extensive shops, bars and restaurants on Chiswick High Road. No chain.

## SITUATION



Not to scale, for guidance only and must not be relied upon as a statement of fact.  
All measurements and areas are approximate only

5-7 Turnham Green Terrace, Chiswick, London, W4 1RG

Tel 020 8747 8800

E-mail sales@whitmanandco.com

Website www.whitmanandco.com