



## 3 Old Post Office Court, Norwich

Price £230,000

# 3 Old Post Office Court

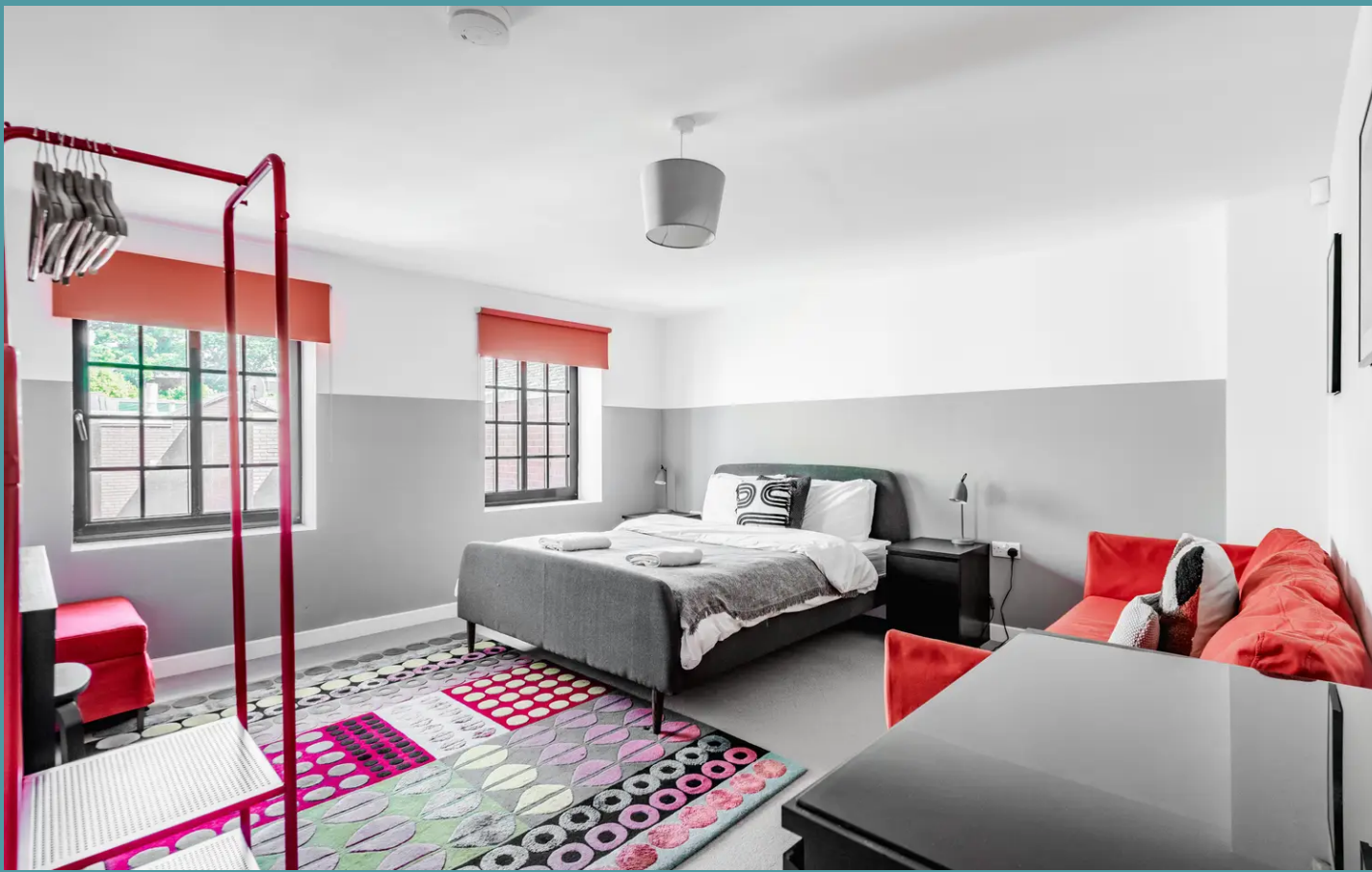
## Norwich

Nestled in the vibrant heart of Norwich, this immaculate one-bedroom maisonette epitomises stylish urban living at its finest. Elegant and contemporary, this apartment is the epitome of turn-key condition, ideal for those seeking a modern and convenient lifestyle. Boasting a sleek kitchen with designer touches, flowing into a spacious living/dining area with stunning Norwich Castle views. The luxurious bathroom offers a three piece suite with chrome accents, while a versatile storage cupboard provides practicality. The light-filled bedroom creates a peaceful haven.

### THE LOCATION

In the heart of Norwich, nestled amidst the vibrant energy of the city center, lies Old Post Office Court (NR2). This prime location places a world of convenience at your doorstep. Explore a diverse range of shops, indulge in culinary delights at various restaurants, or catch a bus to any corner of the city with ease. After dark, the exciting Norwich nightlife awaits, offering a variety of entertainment options for every mood. This address guarantees an immersive city experience, with everything you need just a short stroll away.





## 3 Old Post Office Court

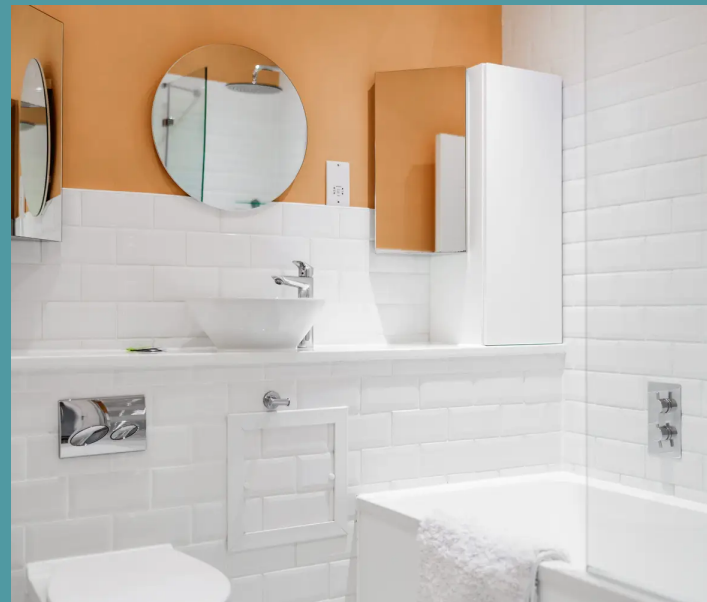
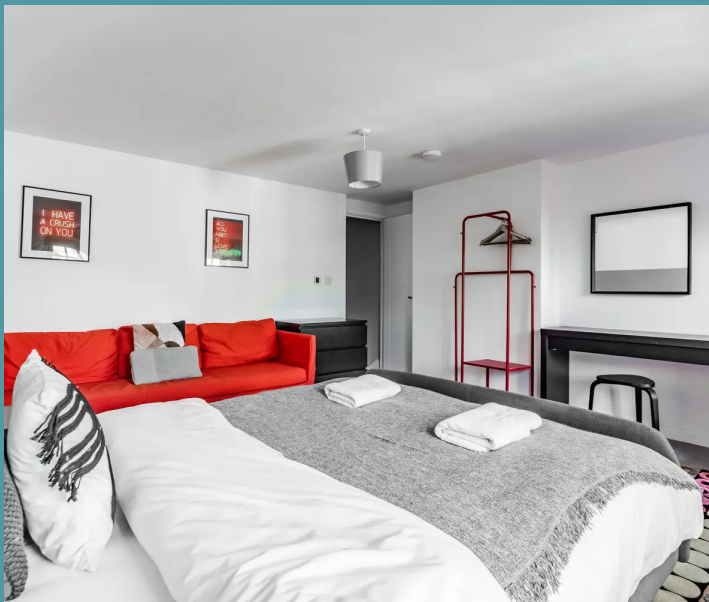
Norwich

### OLD POST OFFICE COURT

Upon entering, you are greeted by a modern kitchen boasting bright fitted units, a chic grey tiled backsplash and provisions for all necessary appliances, ensuring that both functionality and aesthetic appeal are seamlessly integrated. The kitchen flows effortlessly into the large open sitting/dining room, providing ample space for your chosen furniture while offering magnificent views of the iconic Norwich Castle.

The ultra-modern bathroom exudes luxury, showcasing a pristine three-piece suite, sleek chrome accents and matching grouted white tiles, creating an oasis for relaxation and pampering. Accompanying this space is a sizeable storage cupboard with versatile usage potential as a utility, providing practical storage solutions to meet your everyday needs.

The property features one excellent-sized bedroom illuminated by two windows that flood the space with an abundance of natural light, creating a retreat for peaceful nights of rest and rejuvenation.





## 3 Old Post Office Court

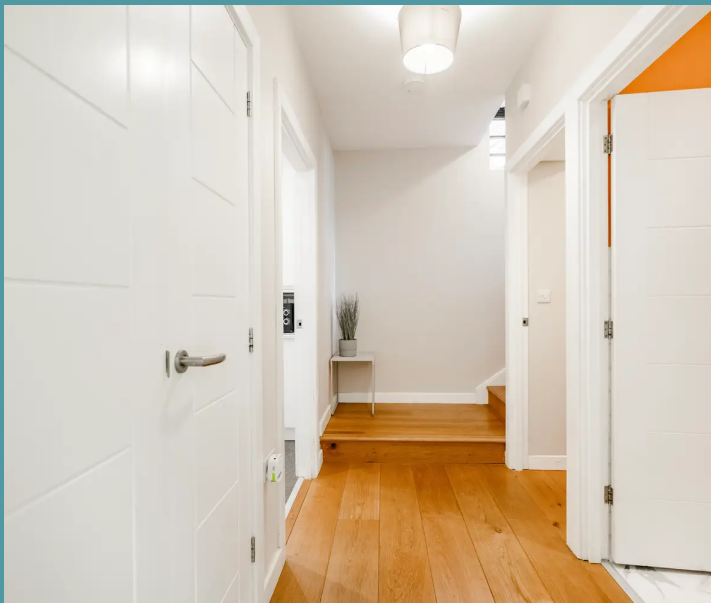
Norwich

This property presents an ideal buy-to-let opportunity in a prime location, offering a lucrative investment for those seeking to capitalise on the demand for high-quality rental accommodation in this prestigious area.

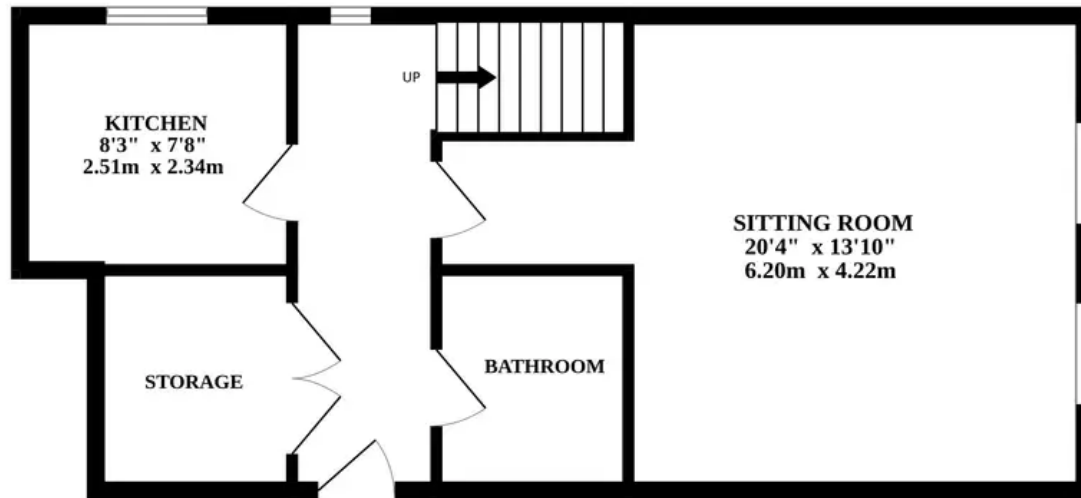
### AGENTS NOTE

We understand this property will be sold leasehold.

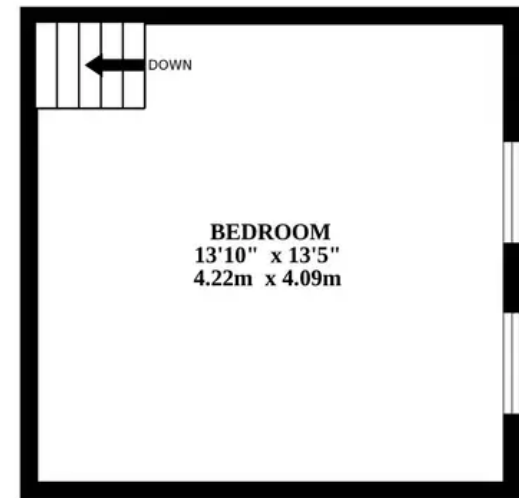
- ONE BEDROOM IMMACULATE APARTMENT LOCATED IN THE HEART OF NORWICH
- COMPLETE TURN-KEY CONDITION
- MODERN KITCHEN WITH BRIGHT FITTED UNITS, GREY TILED BACKSPLASH AND PROVISION FOR APPLIANCES
- LARGE OPEN SITTING/DINING ROOM WITH AMPLE SPACE FOR CHOSEN FURNITURE AND VIEWS OUT TO NORWICH CASTLE
- ULTRA MODERN BATHROOM BOASTING THREE PIECE SUITE, CHROME ACCENTS AND MATCHING GROUDED WHITE TILES
- SIZEABLE STORAGE CUPBOARD WITH VERSATILE USAGE AS A UTILITY
- ONE EXCELLENT SIZED BEDROOM WITH TWO WINDOWS FLOODING IN NATURAL LIGHT
- IDEAL BUY-TO-LET OPPORTUNITY IN A PRIME LOCATION



GROUND FLOOR



1ST FLOOR



Whilst every attempt has been made to ensure the accuracy of the floorplan contained here, measurements of doors, windows, rooms and any other items are approximate and no responsibility is taken for any error, omission or mis-statement. This plan is for illustrative purposes only and should be used as such by any prospective purchaser. The services, systems and appliances shown have not been tested and no guarantee as to their operability or efficiency can be given.  
Made with Metropix ©2024

