



Landcroft Road, SE22
OIEO £450,000

0208 702 8222
pedderproperty.com

pedder



In general

- One double bedroom
- Period conversion
- Private balcony
- Potential to extend – STPP
- Good condition throughout
- Onward chain complete

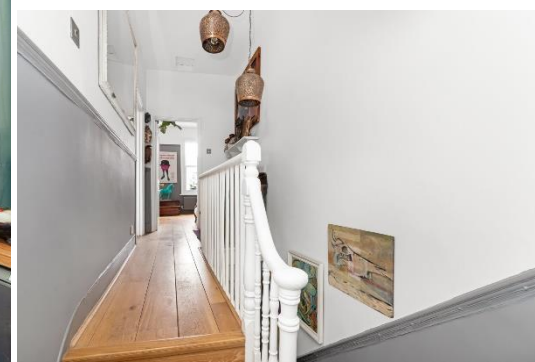
In detail

CHAIN COMPLETE – Gorgeous, charming and enviably located period conversion in the heart of residential East Dulwich.

Set on the first floor of this Victorian property – it enjoys 540 Sq Ft of internal space that has been lovingly maintained by the current owners. There is a characterful 15-ft bay-fronted reception room, a comfortable double bedroom a separate modern kitchen as well as a sit-on balcony – ideal for a morning coffee.

Landcroft Road is ideally located for the independent shops, restaurants and bars of Lordship Lane and North Cross Road as well as the nearby parks and green spaces. There are strong transport links into The City and West End from East Dulwich station (0.7 miles) as well as bus/cycle routes through the neighbouring Peckham Rye, Camberwell and Dulwich Village.

EPC: D | Council Tax Band: B | Lease: 964 years remaining | SC: Nil | GR: Nil | Buildings Insurance: £519.68



Floorplan

Landcroft Road, SE22

Approximate Gross Internal Area
60.2 sq m / 640 sq ft



Copyright www.pedderproperty.com © 2024
These plans are for representation purposes only as defined by RICS - Code of Measuring Practice. Not drawn to Scale. Windows and door openings are approximate. Please check all dimensions, shapes and compass bearings before making any decisions reliant upon them.

Pedder Property Ltd trading as Pedder for themselves and for the vendor/landlord of this property whose agents they are, give notice that (1) these particulars do not constitute any part of an offer or contract, (2) all statements contained within these particulars are made without responsibility on the part of Pedder or the vendor/landlord, (3) whilst made in good faith, none of the statements contained within these particulars are to be relied upon as a statement of representation or fact, (4) any intending purchaser/tenant must satisfy him/herself by inspection or otherwise as to the correctness of each of the statements contained within these particulars, (5) the vendor/landlord does not make or give either Pedder or any person in their employment any authority to make or give representation or warranty whatsoever in relation to this property.