

Goldhawk Road
Hammersmith, W6



324a

Goldhawk Road

£1,095,000 Leasehold plus Share of Freehold

Description

A tastefully presented and spacious 3-bedroom, ground-floor maisonette within this semi-detached property, conveniently located and offering stylish, contemporary living. The apartment, which has been refurbished and improved over the last few years, benefits from excellent proportions, abundant storage, off-street parking and a share of the freehold. Private front door leading into the maisonette's entrance hallway; utility/storage cupboard; master bedroom with ensuite; family bathroom with underfloor heating; open-plan kitchen/living area with doors leading out onto the fabulously arranged 32' west-facing garden; sizeable, second double bedroom; additional double bedroom/study; private storage cupboard outside front door and off-street parking with electric charging point.

The property is within walking distance of the reputable Ravenscourt Park, the Stamford Brook tube station served by the District Line and the plethora of popular pubs, cafes, eateries and retailers that line the Askew Road, Chiswick High Road and King Street.



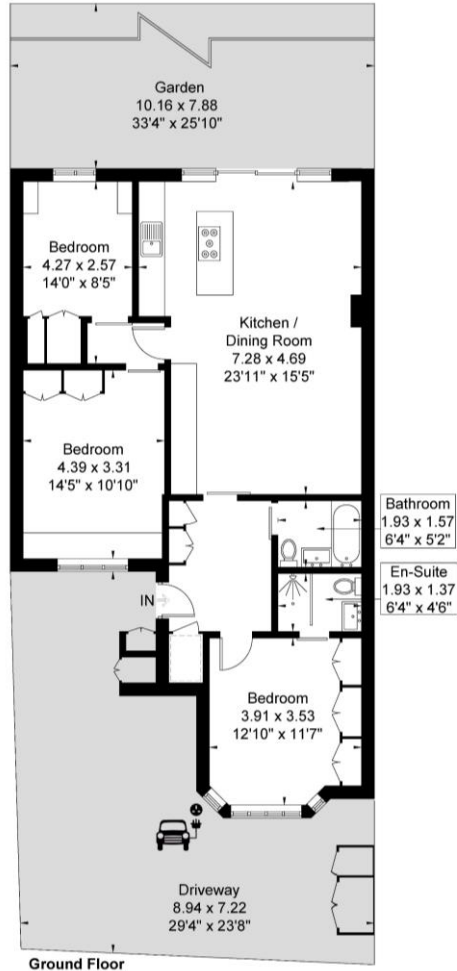


Key Features

- | 1004 sqft / 93.4 sqmt
- | EPC Rating = C
- | Share of freehold – Lease: 999 years from 16/08/2019
- | Stylish and contemporary
- | Private entrance
- | 4-minute walk to Ravenscourt Park
- | 5-minute walk to Stamford Brook tube station (District Line)
- | 10-minute walk to Askew Road, Chiswick High Road and King Street
- | 33' west-facing garden
- | Off-street parking (2 cars + electric charging point)

Goldhawk Road

Approximate Gross Internal Area = 93.4 sq m / 1004 sq ft



Ground Floor

Although every attempt has been made to ensure accuracy, all measurements are approximate. The floorplan is for illustrative purposes only and not to scale.
© www.prspective.co.uk

Goldhawk Road
Approximate Gross Internal Area = 93.4 sq m / 1004 sq ft

Score	Energy rating	Current	Potential
92+	A		
81-91	B		
69-80	C	70 C	77 C
55-68	D		
39-54	E		
21-38	F		
1-20	G		

Although every attempt has been made to ensure accuracy, all measurements are approximate. The floorplan is for illustrative purposes only and not to scale.
© www.prspective.co.uk

66 South Parade, Chiswick, W4 5LG
020 8995 1500 | sales@andrewnunnassociates.co.uk

www.andrewnunnassociates.co.uk

