



Thicket Road, SE20  
£479,995

0208 702 9333  
[pedderproperty.com](http://pedderproperty.com)

**pedder**



# In general

- Two bedroom split level conversion
- Characterful accommodation
- Highly regarded road
- Impressive elevated views
- A share of the freehold
- Nearby multiple transport links
- 18ft 9 reception room
- Lots of fitted storage

# In detail

A superbly presented two bedroom split level period conversion forming part of a sought after residential road moments from Crystal Palace Park.

This well-appointed and uncommon accommodation forms part of an attractive Victorian building and is neutrally decorated and neatly finished throughout. The space is accessed on the second floor and comprises of a separate kitchen with granite work surfaces, bedroom two, and a generous 18ft reception room which is flooded with natural light from two large double glazed sash windows - perfectly proportioned for both unwinding and entertaining. The floor above has a characterful feel (at the top of the building) with the main bedroom offering a calm and relaxing ambiance, two large sky lights, (with impressive elevated views), and an abundance of fitted storage. The bathroom has been modernised and also features a skylight. Further benefit includes a share of the freehold.

The residents of Thicket Road enjoy access to a wealth of transport options including Anerley, Penge East / West, and Crystal Palace stations. Also, plenty of shopping and leisure facilities at the Crystal Palace Triangle, Anerley Parade, and the High Street.

EPC: D | Council Tax Band: C | Lease: 988 years remaining | SC: £120pm | GR: N/A | BI: £2,898.84



# Floorplan

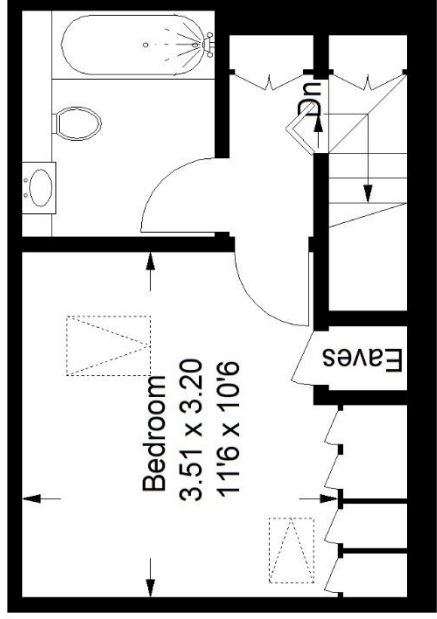
## Thicket Road, SE20

Approximate Gross Internal Area  
(Excluding Eaves)

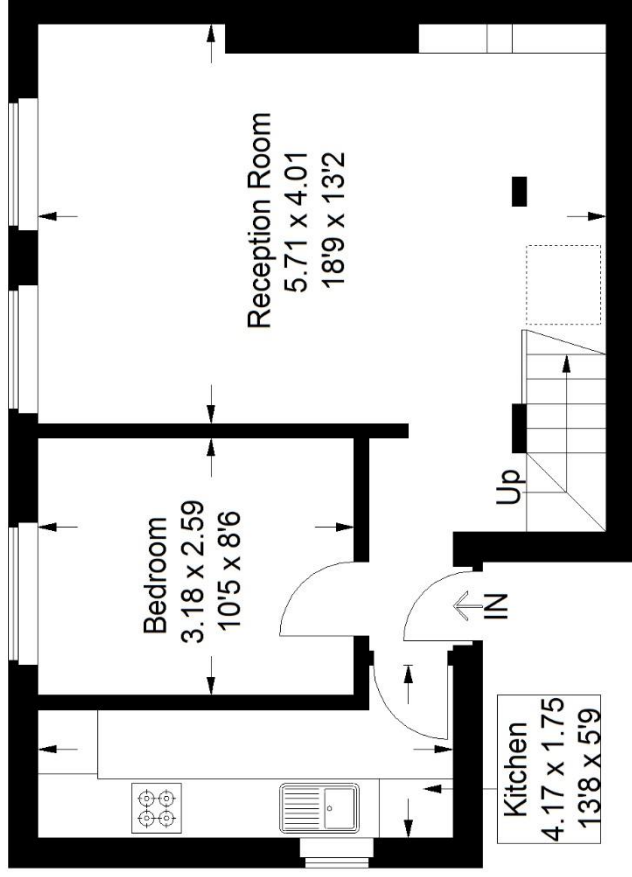
64.6 sq m / 695 sq ft



 = Reduced headroom below 1.5 m / 50



Third Floor



Second Floor

Score	Energy rating	Current	Potential
92+	A		
81-91	B		
69-80	C		72 C
55-68	D	56 D	
39-54	E		
21-38	F		
1-20	G		

Pedder Property Ltd trading as Pedder for themselves and for the vendor/landlord of this property whose agents they are, give notice that (1) these particulars do not constitute any part of an offer or contract, (2) all statements contained within these particulars are made without responsibility on the part of Pedder or the vendor/landlord, (3) whilst made in good faith, none of the statements contained within these particulars are to be relied upon as a statement of representation or fact, (4) any intending purchaser/tenant must satisfy him/herself by inspection or otherwise as to the correctness of each of the statements contained within these particulars, (5) the vendor/landlord

Copyright www.pedderproperty.com © 2024

These plans are for representation purposes only as defined by RICS - Code of Measuring Practice. Not drawn to Scale. Windows and door openings are approximate. Please check all dimensions, shapes and compass bearings before making any decisions reliant upon them.