



Herne Hill, SE24
£1,800PCM

0208 702 9555
pedderproperty.com

pedder



In general

- Two bedroom
- Plenty of storage
- Period features
- Unfurnished
- Good transport links

In detail

A characterful one double bedroom apartment to let on Herne Hill available from late August.

Within a distinctive building the well-presented, first floor property comprises a spacious reception room, modern bathroom suite, a compact kitchen, one large double bedroom and communal garden.

Further benefits include plenty of storage, an abundance of light, high ceilings in living room and bedroom.

Located within the centre of four stations leading to central London, with Herne Hill and North Dulwich being 10 mins walk away and Loughborough Junction and Denmark Hill being within 15 mins walk (featuring both Southern trains & Overground trains).

The property is also just a close proximity to various local amenities including a variety of restaurants, coffee shops, supermarkets, cafes and gastro pubs.

EPC: D | Council Tax Band: C | Offered Unfurnished | Available from late August | Holding Deposit: £415.38 | Security Deposit: £2,076.92 | Call Pedder on 020 8702 9555

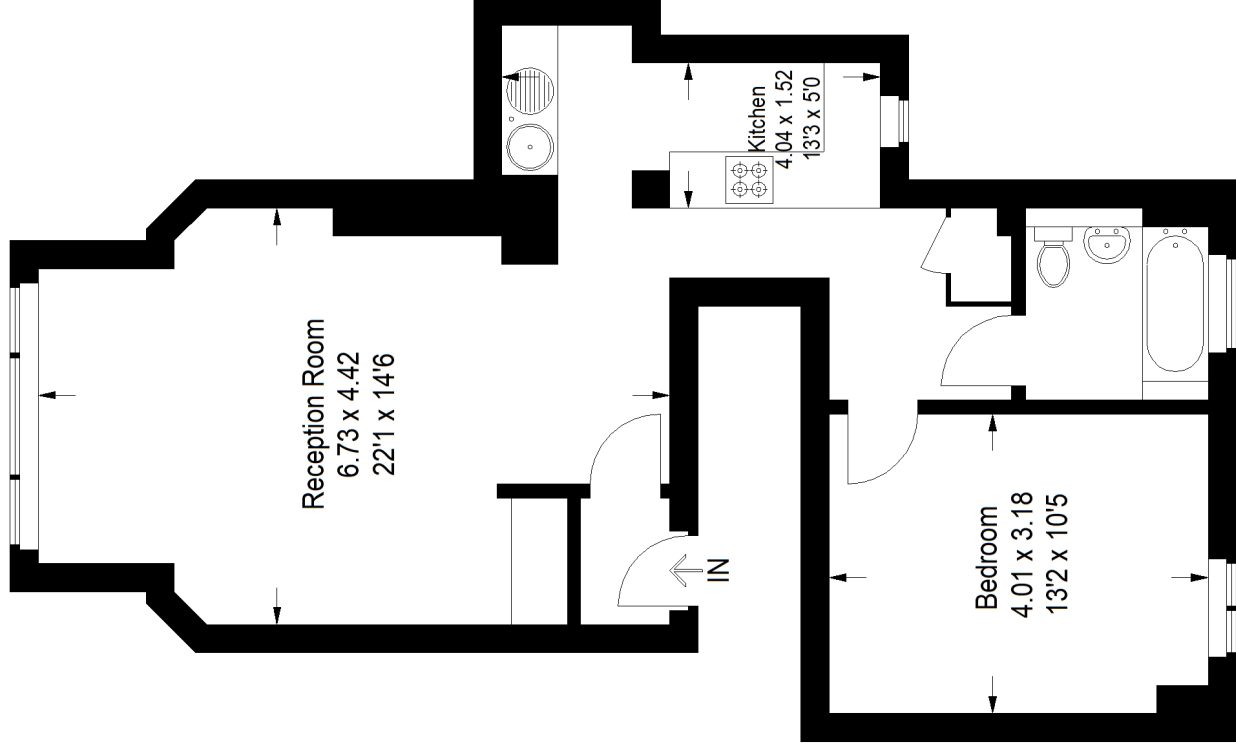


Floorplan

Herne Hill, SE24

Approximate Gross Internal Area

58.2 sq m / 626 sq ft



First Floor

Copyright www.pedderproperty.com © 2023

These plans are for representation purposes only as defined by RICS - Code of Measuring Practice. Not drawn to Scale. Windows and door openings are approximate. Please check all dimensions, shapes and compass bearings before making any decisions reliant upon them.

Score	Energy rating	Current	Potential
92+	A		
81-91	B		
69-80	C		79 C
55-68	D	57 D	
39-54	E		
21-38	F		
1-20	G		

Pedder Property Ltd trading as Pedder for themselves and for the vendor/landlord of this property whose agents they are, give notice that (1) these particulars do not constitute any part of an offer or contract, (2) all statements contained within these particulars are made without responsibility on the part of Pedder or the vendor/landlord, (3) whilst made in good faith, none of the statements contained within these particulars are to be relied upon as a statement of representation or fact, (4) any intending purchaser/tenant must satisfy him/herself by inspection or otherwise as to the correctness of each of the statements contained within these particulars, (5) the vendor/landlord