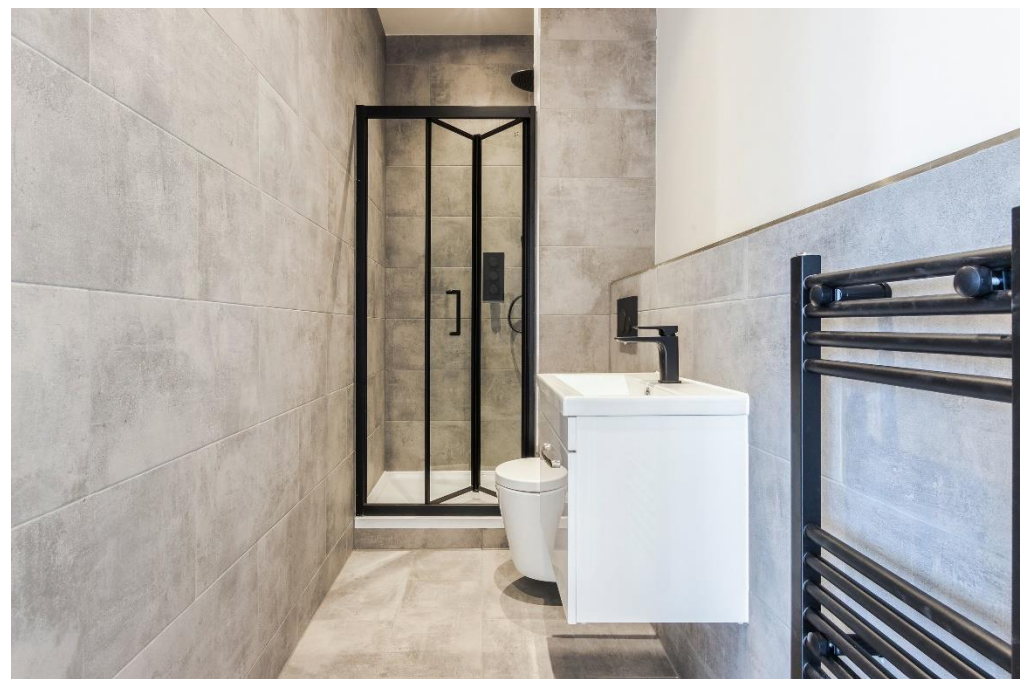




Alma Place, SE19  
£1,950 PCM

0208 702 9333  
[pedderproperty.com](https://pedderproperty.com)

**pedder**



# In general

- New build development
- Two bed house
- Open plan kitchen
- Courtyard
- Excellent location
- Close to Crystal Palace train station
- Available immediately
- Unfurnished

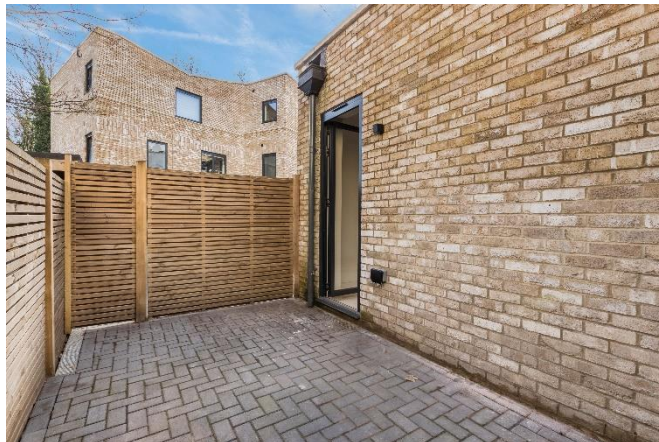
# In detail

A single storey two bedroom house situated within The Alma Yard Development, a central location to the Crystal Palace Triangle.

Measuring 644 square feet and comprises of a spacious, open plan kitchen / living room with dining space, two good sized bedrooms at either end of the property and complete with a stylish bathroom with shower cubicle. Further benefits include a private courtyard/patio area and an excellent location.

Alma Place, SE19 offers easy access to the many local amenities including excellent restaurants, high-end coffee shops / cafes, an Everyman cinema and everything else you would expect in a modern, residential outpost of London. Extra-curricular pursuits are also covered with yoga studios, ceramics classes and the leisure facilities of the iconic Crystal Palace Park.

EPC: B | Council Tax: TBC | HD: £450 | SD: £2,250 | Offered unfurnished | Available now

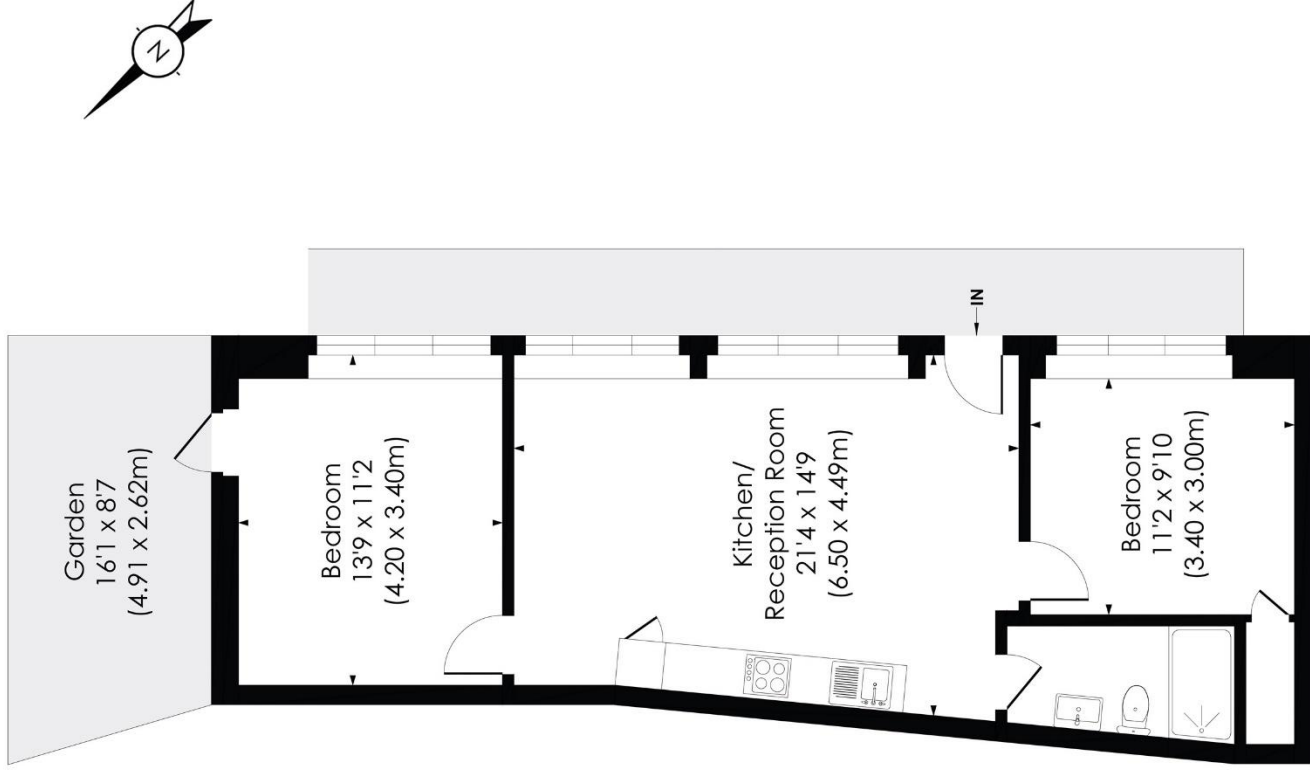


# Floorplan

## ALMA PLACE, SE19

Approx. Gross Internal Floor Area

**644 Sq. ft/59.84 Sq. m**



GROUND FLOOR