



Chadwick Road, SE15
£1,250,000

0208 702 8222
pedderproperty.com

pedder



In general

- Three double bedrooms
- Two shower rooms
- 52-ft open-plan reception
- Excellent condition throughout
- Potential to loft-extend (STPP)
- Desirable location

In detail

Stunning, spacious and tastefully modernised Victorian family house on this desirable road in the heart of Peckham Rye.

Boasting over 1,260 Sq Ft of internal space that has been lovingly extended and remodelled by the current owners – including a sensational 52-ft triple reception. As you enter the front door; the vast open-plan living space hits you with plenty of natural light and elegant structural beams. There is an integrated kitchen adjacent to the dining area which opens up onto the landscaped garden. Upstairs, there are three comfortable double bedrooms and a family shower room with access to a loft (offering potential to extend subject to planning permission).

Chadwick Road offers enviable access into The City and West End from Peckham Rye station (0.2 miles) as well as a host of bus/cycle routes through the neighbouring East Dulwich, Camberwell and Dulwich Village. There are an array of independent shops, bars, restaurants and art galleries of Bellenden Road, Lordship Lane and North Cross Road as well as a host of excellent primary schools, parks and green spaces nearby.

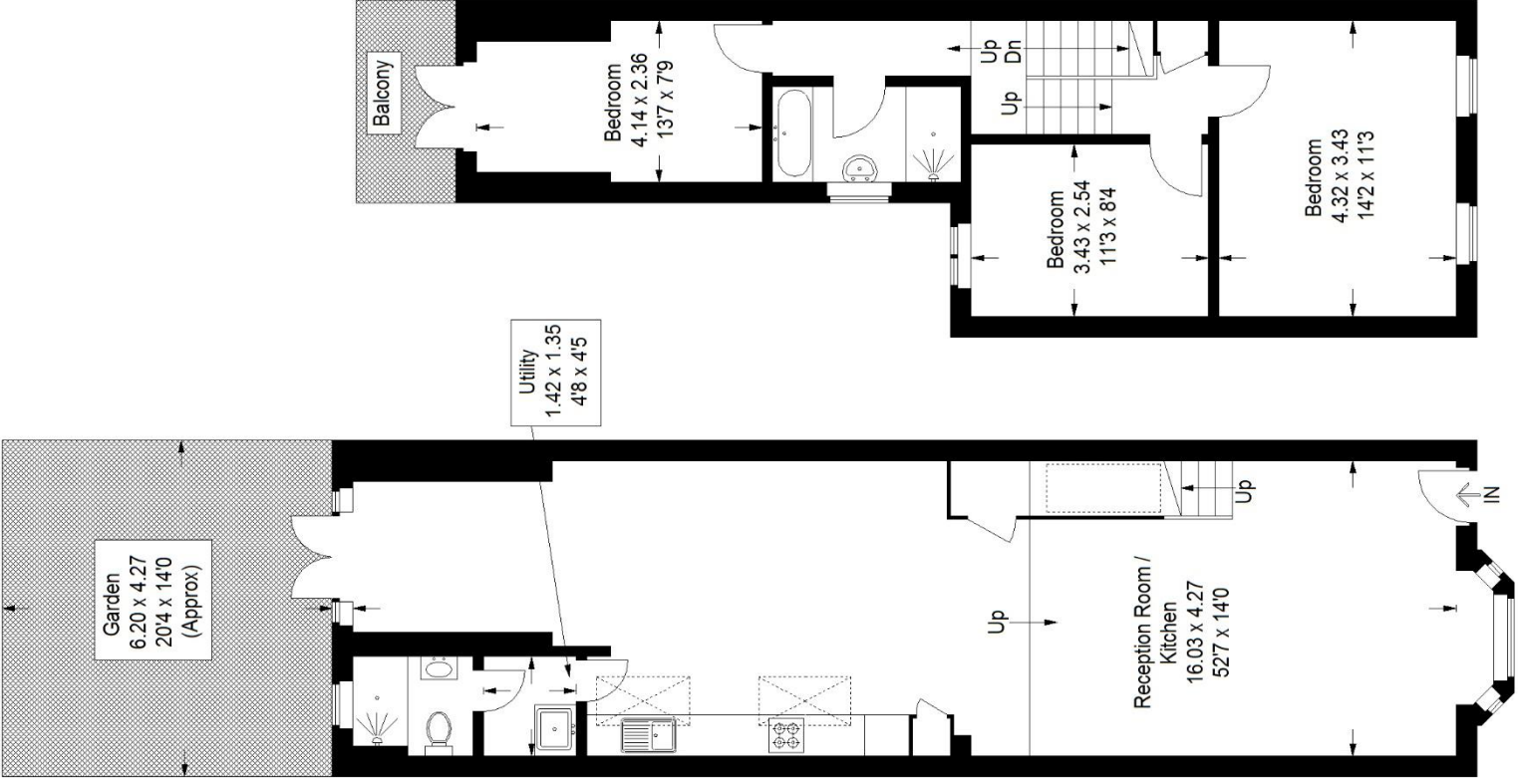
EPC: F | Council Tax Band: TBC



Floorplan

Chadwick Road, SE15

Approximate Gross Internal Area
117.9 sq m / 1269 sq ft



Ground Floor

First Floor

= Reduced headroom below 1.5 m / 5'0"

Copyright www.pedderproperty.com © 2024
 These plans are for representation purposes only as defined by RICS - Code of Measuring Practice. Not drawn to Scale. Windows and door openings are approximate. Please check all dimensions, shapes and compass bearings before making any decisions reliant upon them.

Pedder Property Ltd trading as Pedder for themselves and for the vendor/landlord of this property whose agents they are, give notice that (1) these particulars do not constitute any part of an offer or contract, (2) all statements contained within these particulars are made without responsibility on the part of Pedder or the vendor/landlord, (3) whilst made in good faith, none of the statements contained within these particulars are to be relied upon as a statement of representation or fact, (4) any intending purchaser/tenant must satisfy him/herself by inspection or otherwise as to the correctness of each of the statements contained within these particulars, (5) the vendor/landlord does not make or give either Pedder or any person in their employment any authority to make or give representation or warranty whatsoever in relation to this property.