



Roselle Court, Park View Road, Ealing, London, w5

£525,000

For Sale



- PRIVATE GARDEN
- TWO DOUBLE BEDROOMS

- MODERN KITCHEN & BATHROOM
- SCHOOL CATCHMENT

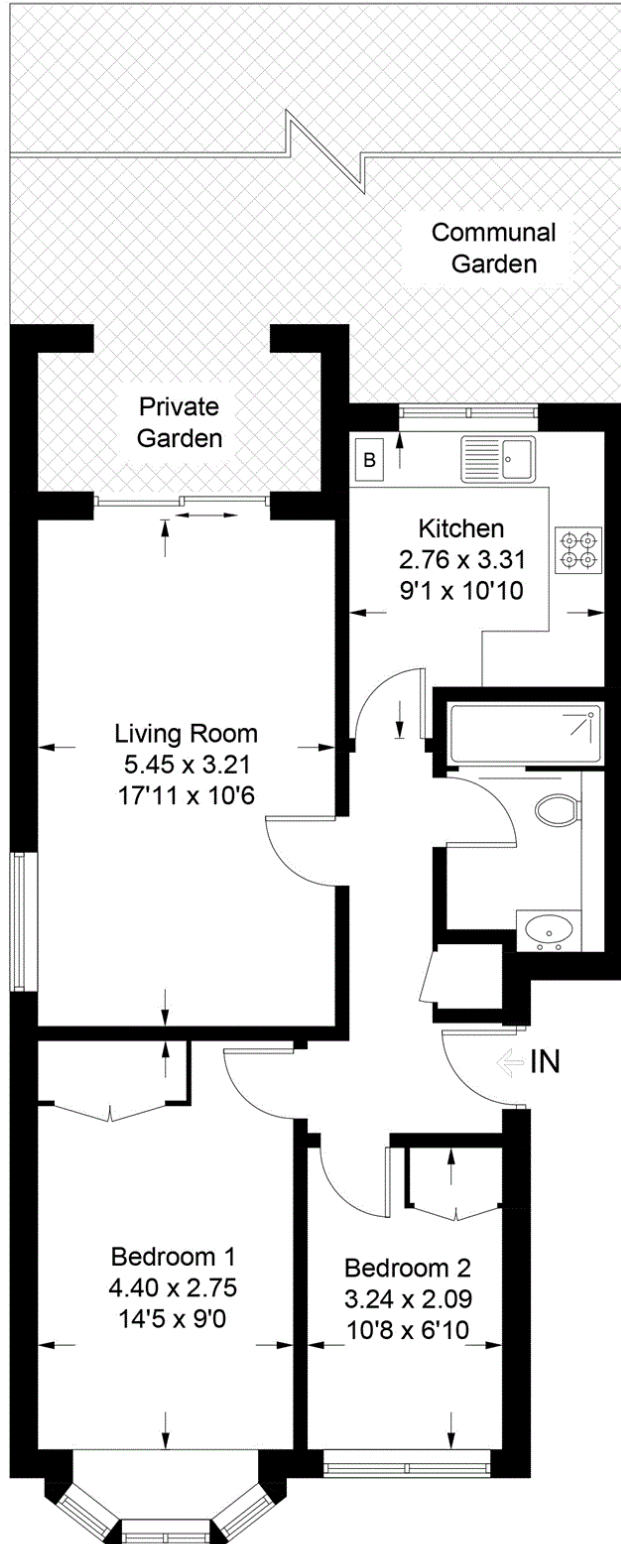
A larger than average and well presented two double bedroom Ground floor flat set in this sought after location. Moments from the heart of Ealing Broadway and Ealing Broadway tube station (Central, District, First Great Western & Heathrow Connect lines). The property benefits from double glazing and gas central heating throughout. In the catchment area of Ada Lovelace.



A larger than average and well presented two double bedroom Ground floor flat set in this sought after location. Moments from the heart of Ealing Broadway and Ealing Broadway tube station (Central, District, First Great Western & Heathrow Connect lines). The property benefits from double glazing and gas central heating throughout. In the catchment area of Ada Lovelace.

Roselle Court

Approximate Gross Internal Area = 58.1 sq m / 625 sq ft



Ground Floor

Illustration for identification purposes only, measurements are approximate, not to scale. (ID871992)

Map

