



Greystoke Park Terrace, Ealing, Ealing, London, W5

£425,000

For Sale



- TWO LARGE DOUBLES
- PRIVATE FRONT GARDEN

- OWN SEPARATE ENTRANCE
- LARGE LOUNGE & KITCHEN

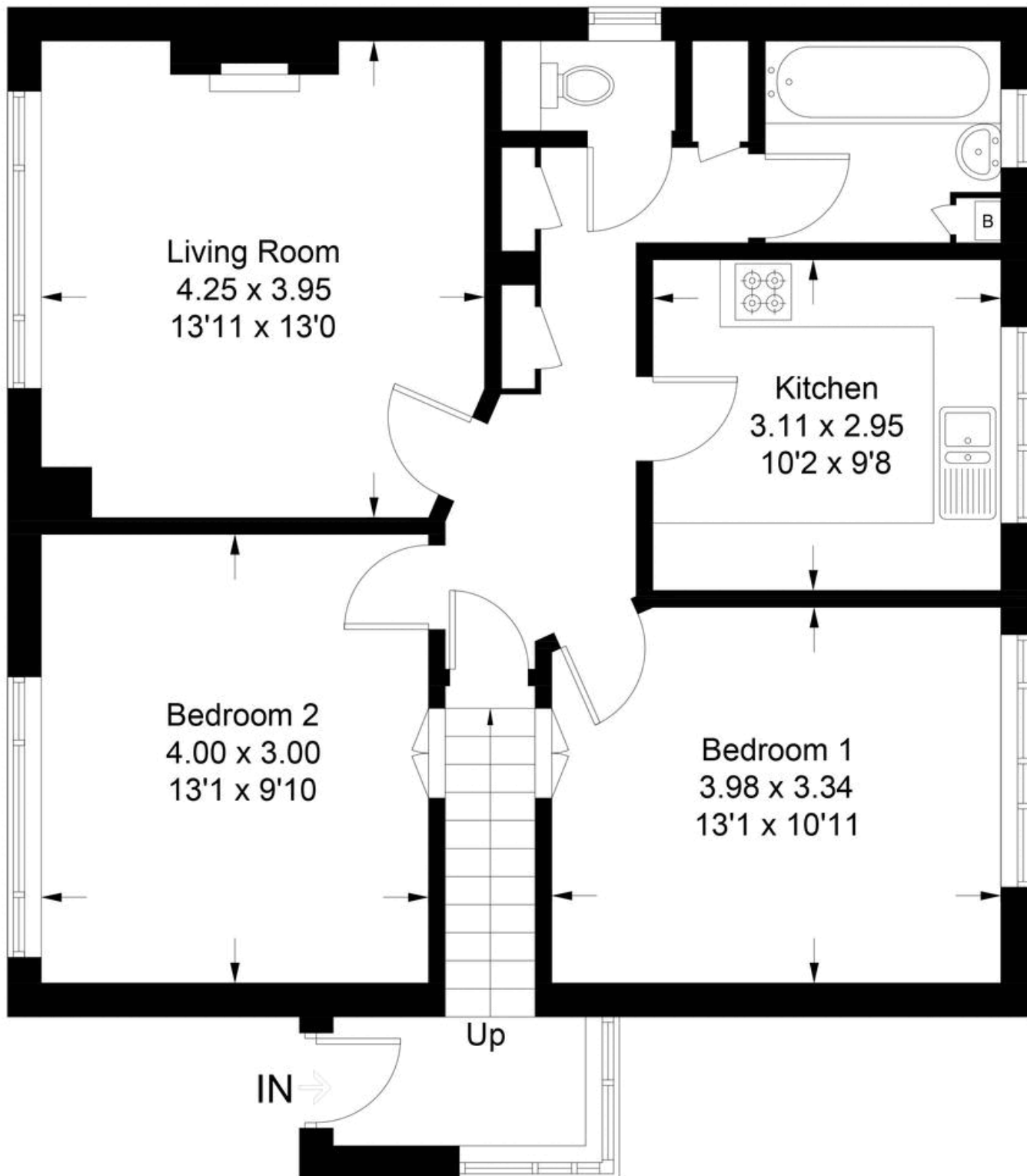
A large two double bedroomed maisonette with own garden to the front of the property, is offered to the market in good condition but with the opportunity to put your own stamp and possibly increase the size of the property STPP. With a large separate kitchen and bright, airy lounge this is the perfect opportunity for a first time buyer or developer alike. With no onward chain this is a must see flat, situated with easy access to the A40, and Hanger Lane Tube Station (Central Line) and its local shops and amenities. Please call Rolfe East on 0208 567 2242 for more details.



A large two double bedded maisonette with own garden to the front of the property, is offered to the market in good condition but with the opportunity to put your own stamp and possibly increase the size of the property STPP. With a large separate kitchen and bright, airy lounge this is the perfect opportunity for a first time buyer or developer alike. With no onward chain this is a must see flat, situated with easy access to the A40, and Hanger Lane Tube Station (Central Line) and its local shops and amenities. Please call Rolfe East on 0208 567 2242 for more details.

# Greystoke Park Terrace

Approximate Gross Internal Area = 75.2 sq m / 809 sq ft



## First Floor

Illustration for identification purposes only, measurements are approximate, not to scale. (ID879108)



# Map

