

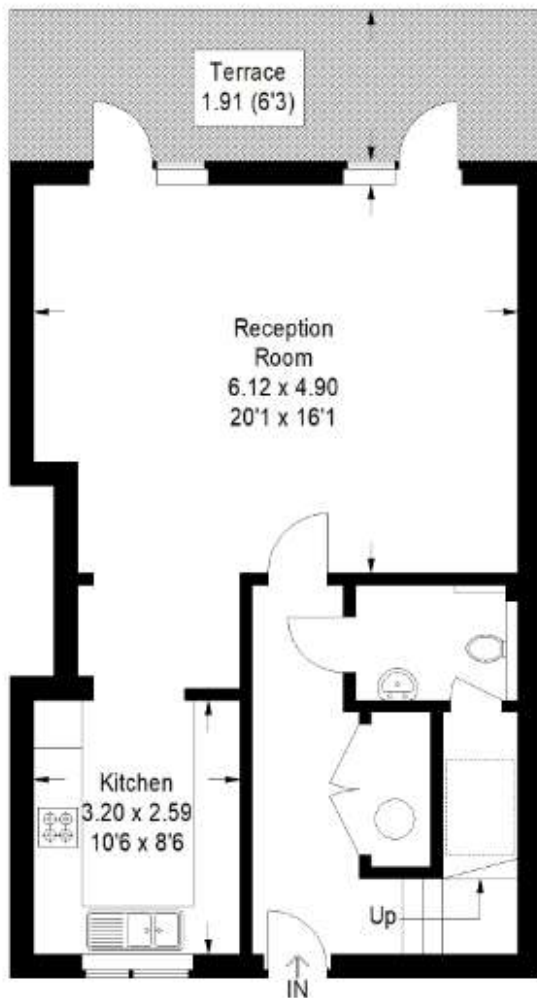
Croxted Road, SE21

Approximate Gross Internal Area

Second Floor = 58.0 sq m / 624 sq ft

Third Floor = 58.3 sq m / 628 sq ft

Total = 116.3 sq m / 1252 sq ft



Second Floor



Third Floor

Copyright www.pedderproperty.com © 2018

These plans are for representation purposes only as defined by RICS - Code of Measuring Practice.

Not drawn to Scale. Windows and door openings are approximate. Please check all dimensions, shapes and compass bearings before making any decisions reliant upon them.