



Birkbeck Hill, SE21
£2,150 PCM

020 8702 8111
pedderproperty.com

pedder



In general

- A stunning ground floor garden flat
- Two double bedrooms
- Fitted kitchen, modern bathroom
- Lovely 40' rear garden with large timber framed home office
- Available early August
- Unfurnished
- Alarm system in place

In detail

A stunning ground floor garden flat located on this very popular road in Dulwich.

The light and bright living space comprises two double bedrooms, spacious lounge with bi-fold doors leading to the garden, fitted kitchen and modern bathroom. There is also underfloor heating throughout the lounge, kitchen and bathroom.

Externally there is a delightful private rear garden measuring 40' and at the rear there is a timber built home office/study with electricity. As the apartment is situated on a hill with a clear view at the back, the garden acts as a sun trap benefitting from full sun from midday until sunset.

There is also a small courtyard accessed via double doors from the 2nd bedroom.

The property is well located for access to Dulwich Village with its cafes, restaurants, park, golf course and Picture Gallery. Herne Hill and Tulse Hill are also nearby with various shopping and leisure facilities. The nearest railway stations providing services into central London are West Dulwich (London Victoria/London Blackfriars) and Tulse Hill (London Bridge and London Blackfriars).

EPC: C | Council Tax Band: B | Available early August | Holding Deposit: £496.15 | Security Deposit: £2,480.76

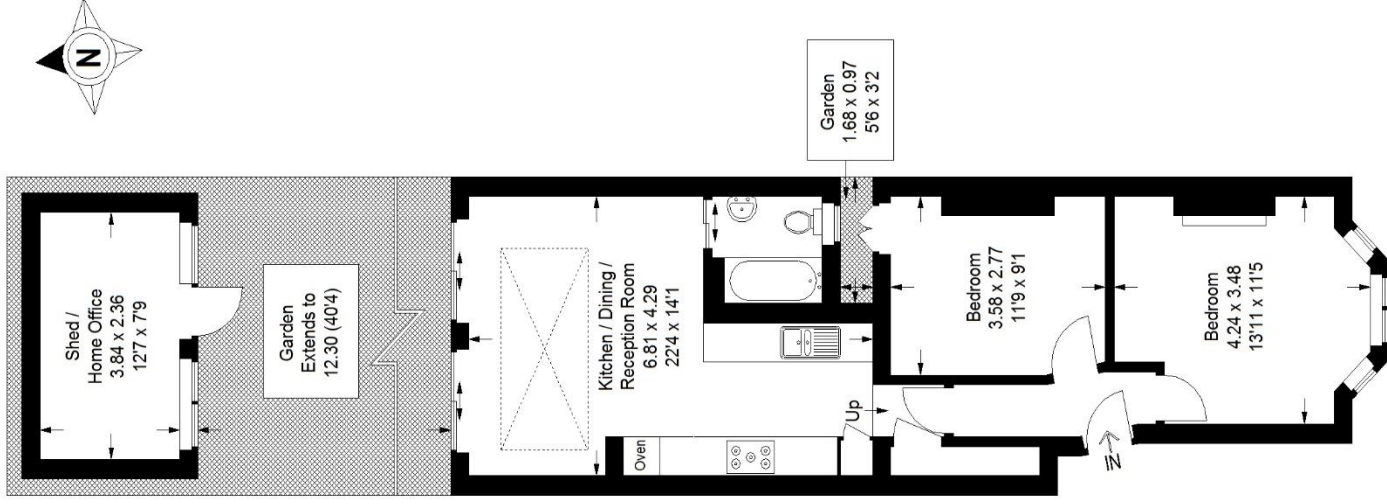


Pedder Property Ltd trading as Pedder for themselves and for the vendor/landlord of this property whose agents they are, give notice that (1) these particulars do not constitute any part of an offer or contract, (2) all statements contained within these particulars are made without responsibility on the part of Pedder or the vendor/landlord, (3) whilst made in good faith, none of the statements contained within these particulars are to be relied upon as a statement of representation or fact, (4) any intending purchaser/tenant must satisfy him/herself by inspection or otherwise as to the correctness of each of the statements contained within these particulars, (5) the vendor/landlord does not make or give either Pedder or any person in their employment any authority to make or give representation or warranty whatsoever in relation to this property.

Floorplan

Birkbeck Hill, SE21

Approximate Gross Internal Area
 Ground Floor = 58.7 sq m / 632 sq ft
 Shed / Home Office = 9.1 sq m / 98 sq ft
 Total = 67.8 sq m / 730 sq ft



Ground Floor

Copyright www.pedderproperty.com © 2020
 These plans are for representation purposes only as defined by RICS - Code of Measuring Practice. Not drawn to Scale. Windows and door openings are approximate. Please check all dimensions, shapes and compass bearings before making any decisions reliant upon them.

Score	Energy rating	Current	Potential
92+	A		
81-91	B		
69-80	C	69 C	74 C
55-68	D		
39-54	E		
21-38	F		
1-20	G		

Pedder Property Ltd trading as Pedder for themselves and for the vendor/landlord of this property whose agents they are, give notice that (1) these particulars do not constitute any part of an offer or contract, (2) all statements contained within these particulars are made without responsibility on the part of Pedder or the vendor/landlord, (3) whilst made in good faith, none of the statements contained within these particulars are to be relied upon as a statement of representation or fact, (4) any intending purchaser/tenant must satisfy him/herself by inspection or otherwise as to the correctness of each of the statements contained within these particulars, (5) the vendor/landlord does not make or give either Pedder or any person in their employment any authority to make or give representation or warranty whatsoever in relation to this property.