



Southholme Close, SE19
£654,000

0208 702 9333
pedderproperty.com

pedder



In general

- No onward chain
- Flexible accommodation over three levels
- Kitchen with a breakfast bar
- Conservatory
- Off street parking
- Small quiet cul de sac
- Nearby central Crystal Palace

In detail

A five bedroom townhouse forming part of a small cul de sac in a sought after location moments from central Crystal Palace.

The property is available for sale with no onward chain and benefits from neutral décor throughout, providing flexible accommodation that can be used in a variety of ways to suit a growing family or those who enjoy entertaining. Highlights include a kitchen / living space with a breakfast bar, a conservatory, off street parking, a shower room, and a large bathroom. There are four double bedrooms (Juliette balcony to main), the fifth bedroom is a single bedroom and could be the perfect space for an office/study or nursery, and a 37ft rear garden. This house presents as a blank canvas and is waiting for a new owner to put their own stamp on.

Southholme Close is a small neighbourly cul de sac which is conveniently placed for central Crystal Palace and popular local schools, including Cypress Primary. The area is served by both Gipsy Hill and Crystal Palace stations, whilst nearby parkland includes both Westow Park and Norwood Lake and Grounds.

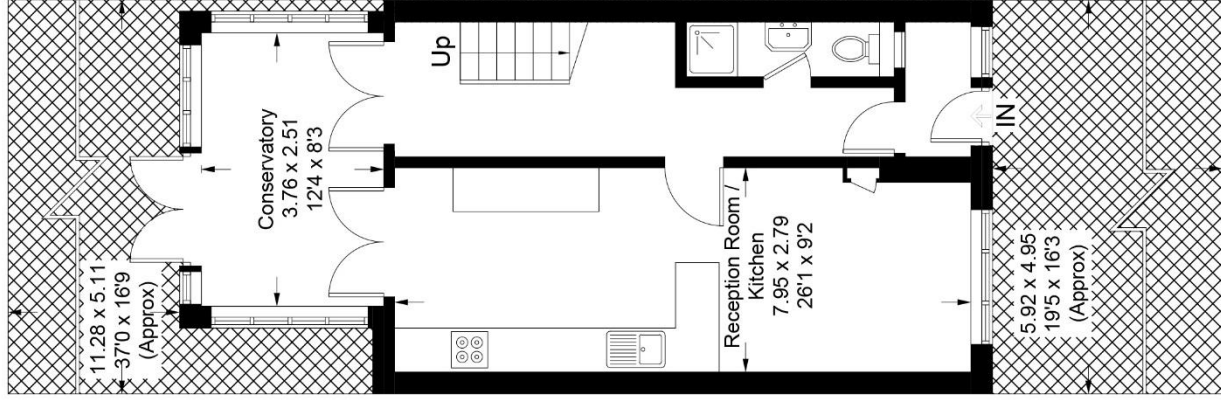
EPC: C | Council Tax Band: E



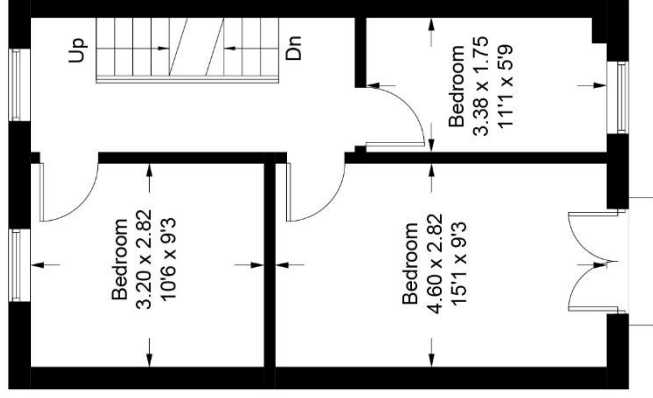
Floorplan

Southolme Close, SE19

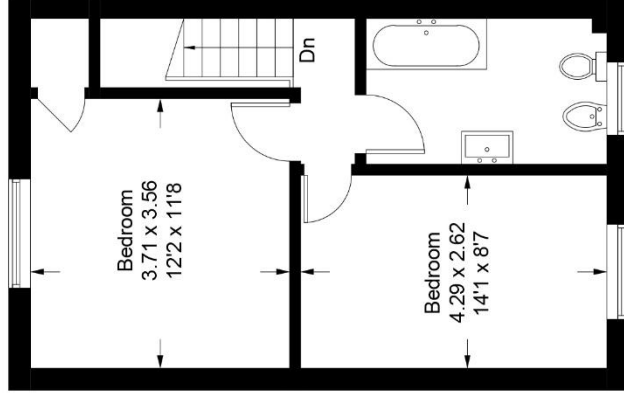
Approximate Gross Internal Area = 124.3 sq m / 1338 sq ft



Ground Floor



First Floor



Second Floor

Score	Energy rating	Current	Potential
92+	A		92 B
81-91	B		
69-80	C	69 C	
55-68	D		
39-54	E		
21-38	F		
1-20	G		

Pedder Property Ltd trading as Pedder for themselves and for the vendor/landlord of this property whose agents they are, give notice that (1) these particulars do not constitute any part of an offer or contract, (2) all statements contained within these particulars are made without responsibility on the part of Pedder or the vendor/landlord, (3) whilst made in good faith, none of the statements contained within these particulars are to be relied upon as a statement of representation or fact, (4) any intending purchaser/tenant must satisfy him/herself by inspection or otherwise as to the correctness of each of the statements contained within these particulars, (5) the vendor/landlord

Copyright www.pedderproperty.com © 2018
 These plans are for representation purposes only as defined by RICS - Code of Measuring Practice.
 Not drawn to Scale. Windows and door openings are approximate. Please check all dimensions,
 shapes and compass bearings before making any decisions reliant upon them.