



Clive Road, SE21
Offers in excess of £375,000

020 8702 8111
pedderproperty.com

pedder



In general

- Set in a gated development is this attractive top floor purpose built apartment
- Three bedrooms
- Lounge/dining room open-plan to a fitted kitchen
- Bathroom
- Well presented throughout
- Sought after location
- No onward chain

In detail

Set in a gated development is this attractive top floor purpose built apartment.

The property offers attractive accommodation comprising of three bedrooms, lounge/dining room open-plan to a fitted kitchen and modern bathroom.

Clevedon Court is a popular development set back from Clive Road, providing well maintained communal areas and gardens and is ideally positioned to benefit from the local amenities of West Dulwich including numerous shops, cafes and restaurants. Dulwich Village is close-by with its popular parks, Picture Gallery and golf course. Crystal Palace is also easily accessible where there are many cafes, bars, restaurants and shopping facilities.

Rail links to central London are from nearby West Dulwich (London Victoria/London Blackfriars), Gipsy Hill (London Bridge /London Victoria) and West Norwood (London Bridge/London Victoria).

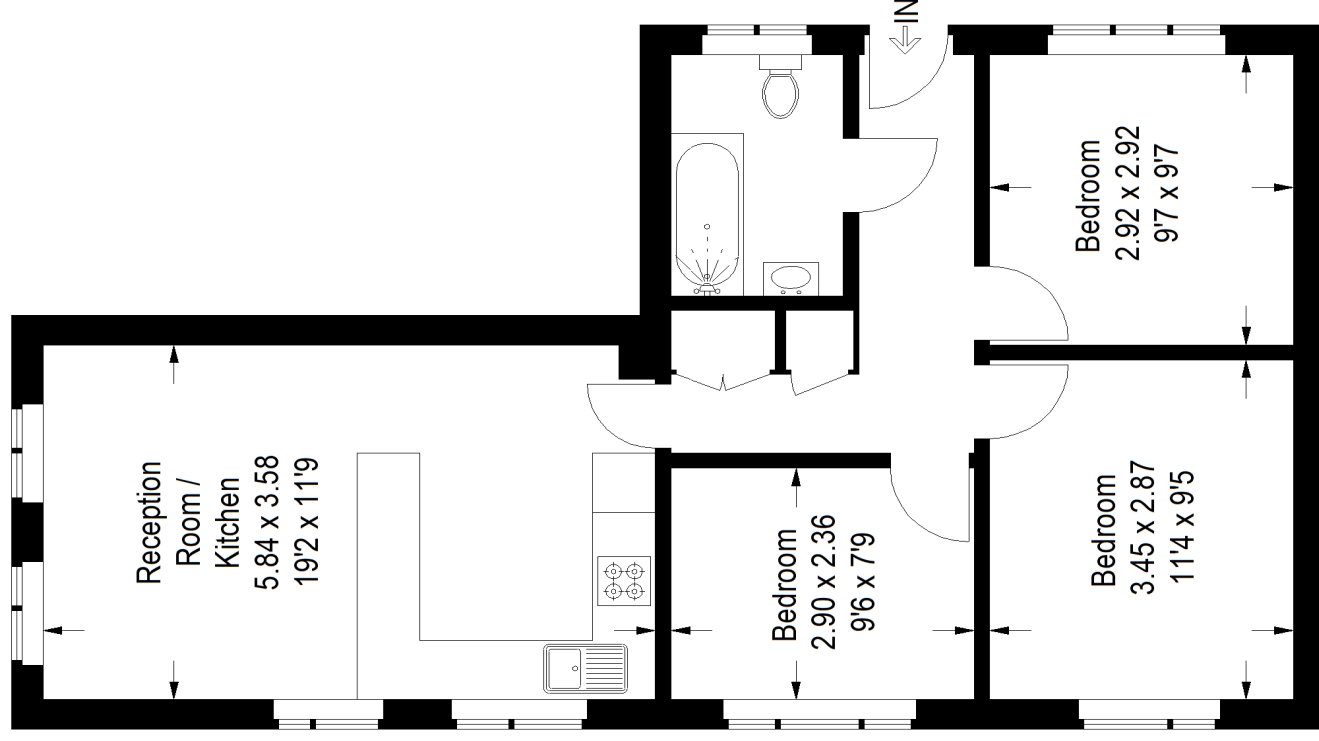
EPC: TBC | Council Tax Band: B | Lease Term Remaining: 118 years | SC: £1,700 pa | GR: £250 | BI: TBC



Floorplan

Clevedon Court, SE21

Approximate Gross Internal Area
60.7 sq m / 653 sq ft



Third Floor

Copyright www.pedderproperty.com © 2024

These plans are for representation purposes only as defined by RICS - Code of Measuring Practice. Not drawn to Scale. Windows and door openings are approximate. Please check all dimensions, shapes and compass bearings before making any decisions reliant upon them.