



Victor Road, SE20
£2,200 PCM

0208 702 9777
pedderproperty.com

pedder



In general

- Alexandra Conservation area
- Semi detached cottage
- Two receptions
- Two double bedrooms with fitted storage
- Charming and characterful
- Bathroom
- Sweet, private garden
- Part furnished
- Available mid July

In detail

A charming two bedroom semi-detached cottage set in this very special area in Penge known as the Alexandra Conservation Area, close to excellent transport links, parks and a wealth of shopping facilities.

The light filled and characterful accommodation is well proportioned, and offers a good balance of living space over two floors. Comprising a cosy lounge to the front with honey stained original wood flooring, a dining room in the centre of the house which is a really nice space to gather for meals, host and chat, the kitchen with plenty of storage, dishwasher, washing machine and full sized fridge freezer, a large family bathroom, and two double bedrooms with fitted storage.

Victor Road is one of a few roads within this charming conservation area renowned for their sense of community and location to transport links including Penge West (Overground and Penge East (London/Victoria). This location provides easy access to both Penge East (London Victoria) and West (Overground) rail links as well as a wide selection of eateries, coffee shops and convenience stores including the much loved Alexandra Nurseries.

Moments away is Crystal Palace Park offering 200 acres of open space, numerous leisure activities and music events. There is also a Brown & Green café and a weekly Sunday Farmers Market.

****Length of initial tenancy 12 months****

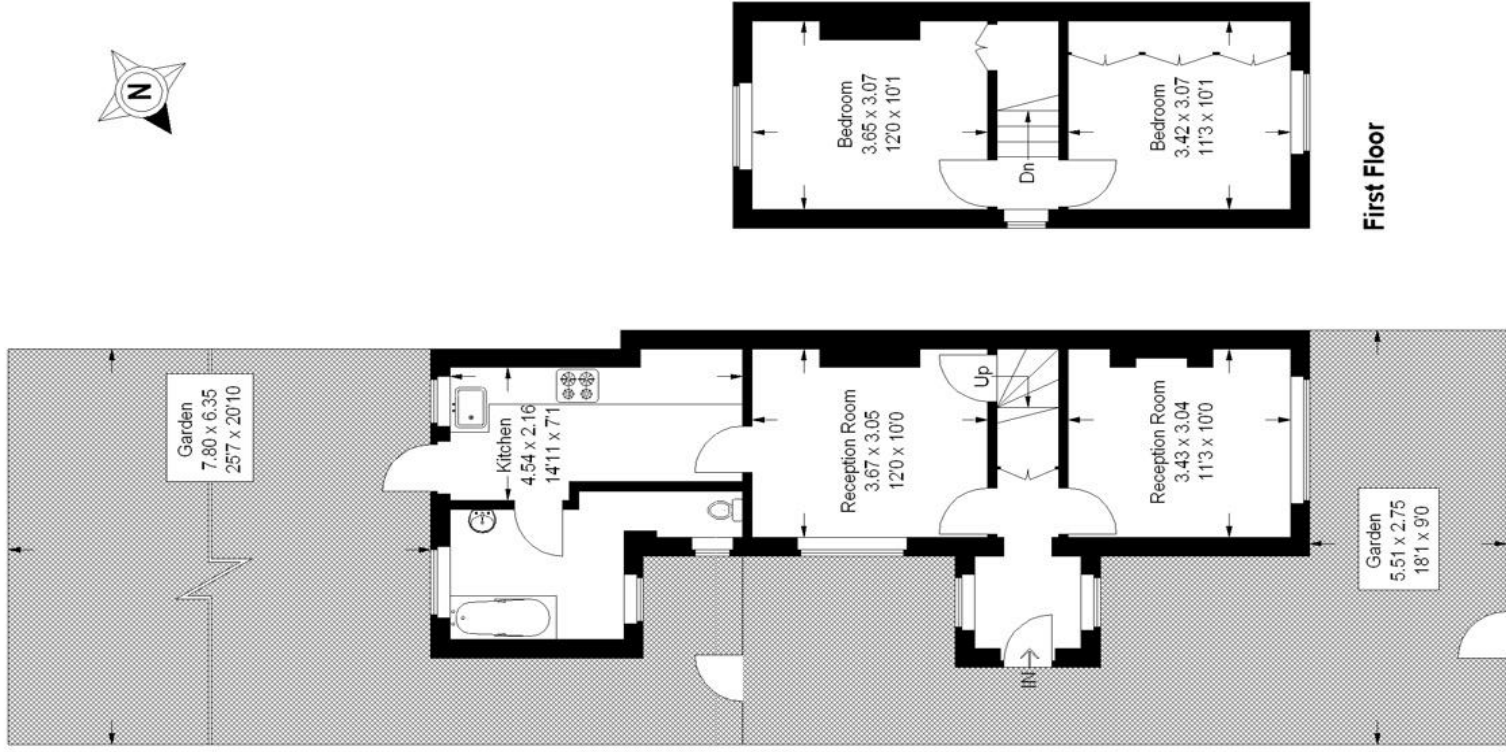
EPC: E | Council Tax Band: D | Available mid July | Offered part furnished | HD: £507.69 | HD: £2,538.46



Floorplan

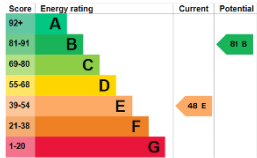
Victor Road, SE20

Approximate Gross Internal Area
 Ground Floor = 46.7 sq m / 503 sq ft
 First Floor = 25.5 sq m / 274 sq ft
 Total = 72.2 sq m / 777 sq ft



Ground Floor

Copyright www.pedderproperty.com © 2014
 These plans are for representation purposes only as defined by RICS - Code of Measuring Practice. Not to Scale



Pedder Property Ltd trading as Pedder for themselves and for the vendor/landlord of this property whose agents they are, give notice that (1) these particulars do not constitute any part of an offer or contract, (2) all statements contained within these particulars are made without responsibility on the part of Pedder or the vendor/landlord, (3) whilst made in good faith, none of the statements contained within these particulars are to be relied upon as a statement of representation or fact, (4) any intending purchaser/tenant must satisfy him/herself by inspection or otherwise as to the correctness of each of the statements contained within these particulars, (5) the vendor/landlord does not make or give either Pedder or any person in their employment any authority to make or give representation or warranty whatsoever in relation to this property.