



East Dulwich Grove, SE22
£1,750 pcm

0208 702 8222
pedderproperty.com

pedder

In general

- Spacious one bedroom flat
- Victorian conversion
- Excellent location
- Unfurnished
- Available from mid-October
- EPC: D

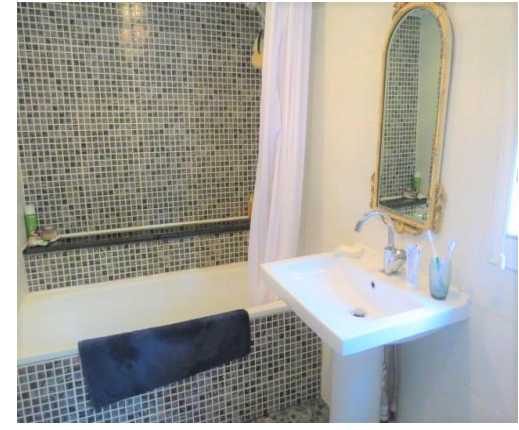
In detail

Spacious and bright one bedroom period conversion ideally located in the heart of East Dulwich.

The property benefits from a large open-plan kitchen reception with a Juliette balcony and has been maintained to a high standard throughout. There is a modern fitted kitchen, a family bathroom and a large double bedroom with fitted wardrobes.

East Dulwich Grove is perfectly located for the bars, restaurants and independent shops of Lordship Lane as well as a host of parks and green spaces. There are strong transport links from East Dulwich station (0.2 miles) and Denmark Hill station (0.9 miles) as well as bus connections through the neighbouring Herne Hill, Dulwich Village, Camberwell and Peckham.

EPC: D | Council Tax Band: B | Unfurnished | Available from: mid October | Holding Deposit: £403.85 | Security Deposit: £2,019.23



Pedder Property Ltd trading as Pedder for themselves and for the vendor/landlord of this property whose agents they are, give notice that (1) these particulars do not constitute any part of an offer or contract, (2) all statements contained within these particulars are made without responsibility on the part of Pedder or the vendor/landlord, (3) whilst made in good faith, none of the statements contained within these particulars are to be relied upon as a statement of representation or fact, (4) any intending purchaser/tenant must satisfy him/herself by inspection or otherwise as to the correctness of each of the statements contained within these particulars, (5) the vendor/landlord does not make or give either Pedder or any person in their employment any authority to make or give representation or warranty whatsoever in relation to this property.