



Martell Road, SE21
£1,600 PCM

020 8702 8111
pedderproperty.com

pedder

In general

- Available now
- Well-proportioned rooms
- Beautifully decorated throughout
- Private garden
- Dishwasher
- Unfurnished
- Two double bedrooms

In detail

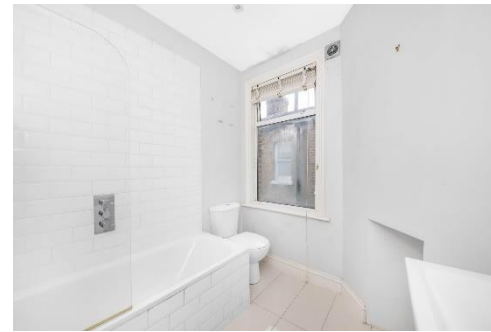
A beautifully presented apartment available to rent in West Dulwich offering flexible accommodation.

Situated on the first floor and with access to a private garden, the apartment is ideal for a professional couple or single occupancy.

Comprising of either an open plan living room and kitchen and two double bedrooms or one bedroom, separate reception room and a big kitchen diner.

Located on Martell Road, local amenities on Rosendale Road and Croxted Road are within easy reach as are West Dulwich & West Norwood stations.

EPC: D | Council Tax Band: C | Available now | Offered unfurnished | HD: £369.23 | SD: £1,846.15



Pedder Property Ltd trading as Pedder for themselves and for the vendor/landlord of this property whose agents they are, give notice that (1) these particulars do not constitute any part of an offer or contract, (2) all statements contained within these particulars are made without responsibility on the part of Pedder or the vendor/landlord, (3) whilst made in good faith, none of the statements contained within these particulars are to be relied upon as a statement of representation or fact, (4) any intending purchaser/tenant must satisfy him/herself by inspection or otherwise as to the correctness of each of the statements contained within these particulars, (5) the vendor/landlord does not make or give either Pedder or any person in their employment any authority to make or give representation or warranty whatsoever in relation to this property.