



Clive Road, SE21  
Guide £300,000 - £325,000

020 8702 8111  
[pedderproperty.com](http://pedderproperty.com)

**pedder**



# In general

- Set in a gated development is this attractive top floor two bedroom purpose built apartment
- Two double bedrooms
- Lounge/dining room
- Kitchen/breakfast room
- Modern bathroom
- Freshly laid wooden flooring
- Well presented throughout
- Popular location
- Offered with no onward chain

# In detail

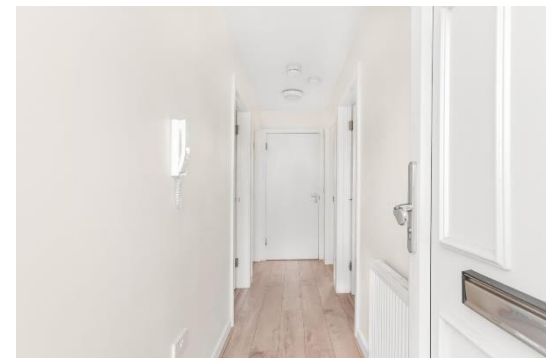
Set in a gated development is this attractive top floor two bedroom purpose built apartment.

The property offers very well presented accommodation comprising of two double bedrooms, lounge/dining room, fitted kitchen/breakfast room and modern bathroom.

Clevedon Court is a popular development set back from Clive Road providing well maintained communal areas and gardens and is ideally positioned to benefit from the local amenities of West Dulwich including numerous shops, cafes and restaurants. Dulwich Village is close-by with its popular parks, Picture Gallery and Golf Course. Crystal Palace is also easily accessible where there are many cafes, bars, restaurants and shopping facilities.

Rail links to central London are from nearby West Dulwich (London Victoria/London Blackfriars), Gipsy Hill (London Bridge /London Victoria) and West Norwood (London Bridge/London Victoria).

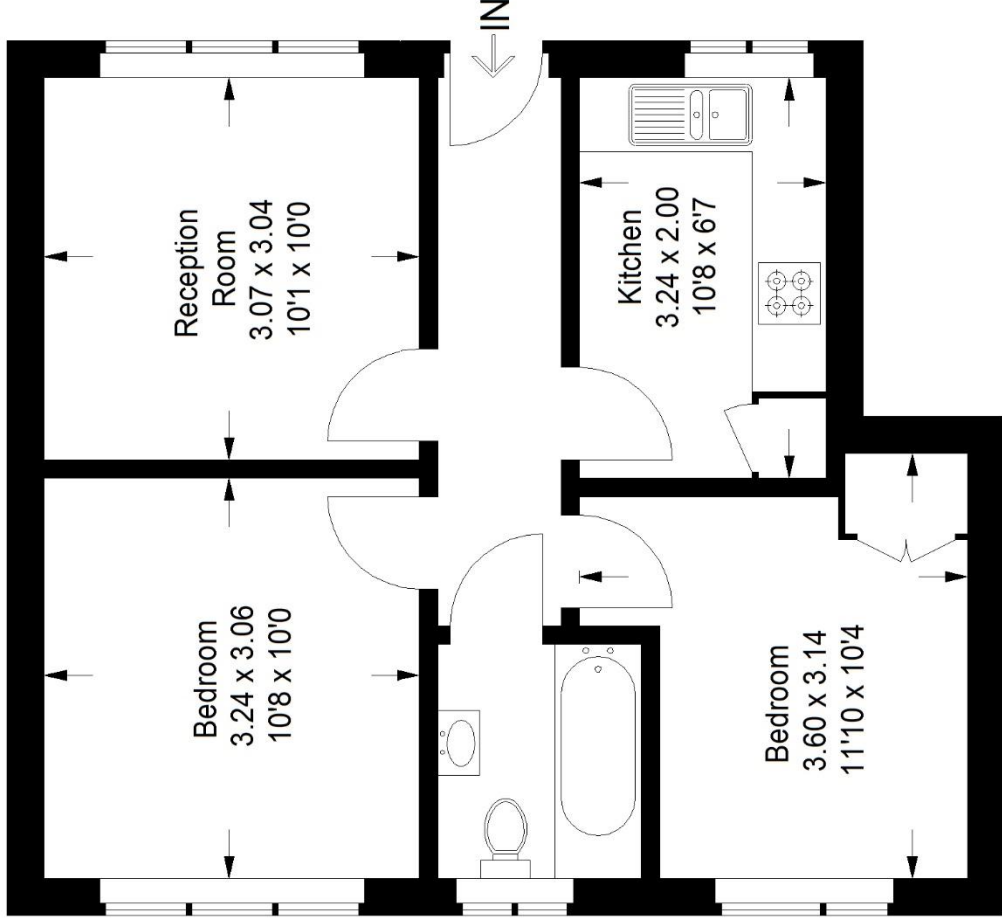
EPC: C | Council Tax Band: B | Lease: 117 years remaining | SC: £1,200.00 | GR: £250,00 | BI: TBC



# Floorplan

## Clevedon Court, SE21

Approximate Gross Internal Area  
45.4 sq m / 489 sq ft



### Third Floor

Copyright [www.pedderproperty.com](http://www.pedderproperty.com) © 2023  
 These plans are for representation purposes only as defined by RICS - Code of Measuring Practice. Not drawn to Scale. Windows and door openings are approximate. Please check all dimensions, shapes and compass bearings before making any decisions reliant upon them.

Score	Energy rating	Current	Potential
92+	A		
81-91	B		
69-80	C	77 C	78 C
55-68	D		
39-54	E		
21-38	F		
1-20	G		

Pedder Property Ltd trading as Pedder for themselves and for the vendor/landlord of this property whose agents they are, give notice that (1) these particulars do not constitute any part of an offer or contract, (2) all statements contained within these particulars are made without responsibility on the part of Pedder or the vendor/landlord, (3) whilst made in good faith, none of the statements contained within these particulars are to be relied upon as a statement of representation or fact, (4) any intending purchaser/tenant must satisfy him/herself by inspection or otherwise as to the correctness of each of the statements contained within these particulars, (5) the vendor/landlord does not make or give either Pedder or any person in their employment any authority to make or give