



Thornsett Road, SE20
£1,295,000

0208 702 9333
[pedderproperty.com](https://www.pedderproperty.com)

pedder



In general

- 3136 sq ft / 291.3 sq m
- Beautifully upgraded and maintained
- Modern kitchen with a breakfast bar
- A large conservatory
- Five bedrooms
- Three bathrooms
- Off street parking and garage
- Sought after residential road

In detail

A beautifully presented and substantial five bedroom semi-detached house positioned on a wide leafy residential road moments from multiple transport links and amenities.

This property has been thoughtfully upgraded and meticulously maintained over many years to provide a warm and welcoming long-term family home. Spanning three floors, the accommodation offers 3136 sq ft / 291.3 sq m of generous space, catering to contemporary living needs. The ground floor features a spacious, well-lit front reception room with a cheerful bay window, an elegant fireplace, and detailed coving, complemented by a 17ft dining room at the back, which showcases newly installed solid wood chevron flooring and French doors leading to the garden. The kitchen is a dream for those who love to cook and host, offering ample work and storage areas, granite countertops, a Belfast sink, and a sociable sit-up breakfast bar. Additionally, there is a large secondary kitchen/utility room, perfect for managing household chores discreetly. A 19ft conservatory with thermal blinds provides a delightful space for year-round enjoyment, with views of the garden. The ground floor also includes a WC, a garage, and a 21ft workshop/storage area. The first floor is home to four bedrooms, separated by a broad landing, with the primary bedroom featuring an en suite shower room and dual vanity sinks, alongside the family bathroom. The top floor accommodates a 19ft guest bedroom with eaves storage and its own shower room. Outside, the property boasts an 84ft mature lawned garden, enveloped in vibrant greenery and enjoying a south-facing aspect, offering a serene retreat on sunny days. Additionally, there is convenient off-street parking available at the front.

Thornsett Road is a popular street which enables ease of access to Birkbeck, Anerley, Clock House, and Norwood Junction (fast to London Bridge), with connections to Victoria, Charing Cross & Cannon Street. If schools are consideration there are nearby options at Stewart Fleming (Ofsted outstanding), St Mark's C of E, and James Dixon primaries.

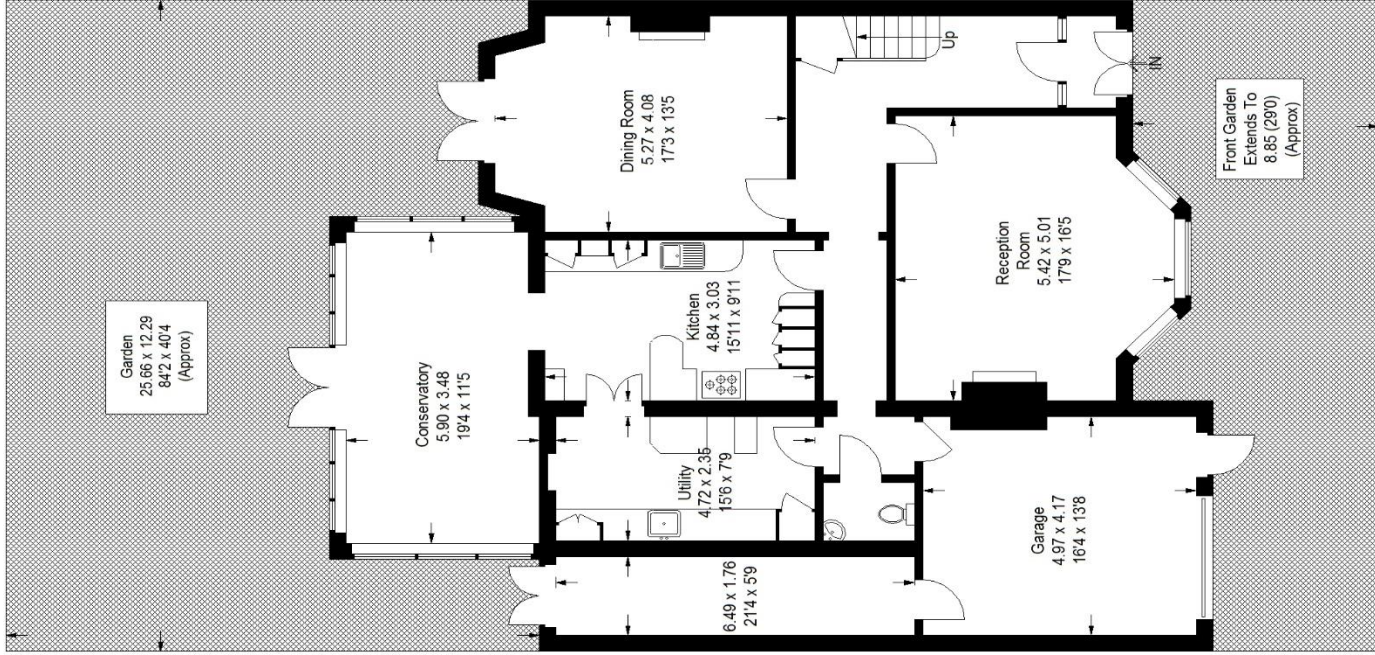
EPC: E | Council Tax Band: F



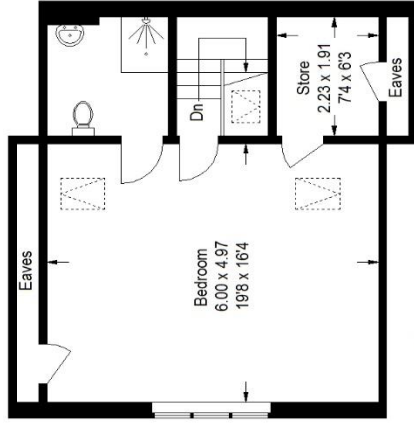
Floorplan

Thornsett Road, SE20

Approximate Gross Internal Area
(Including Garage / Excluding Eaves)
291.3 sq m / 3136 sq ft



Ground Floor



Second Floor



First Floor

Score	Energy rating	Current	Potential
92+	A		
81-91	B		
69-80	C		71 C
55-68	D		
39-54	E	47 E	
21-38	F		
1-20	G		

Pedder Property Ltd trading as Pedder for themselves and for the vendor/landlord of this property whose agents they are, give notice that (1) these particulars do not constitute any part of an offer or contract, (2) all statements contained within these particulars are made without responsibility on the part of Pedder or the vendor/landlord, (3) whilst made in good faith, none of the statements contained within these particulars are to be relied upon as a statement of representation or fact, (4) any intending purchaser/tenant must satisfy him/herself by inspection or otherwise as to the correctness of each of the statements contained within these particulars, (5) the vendor/landlord does not make or give either Pedder or any person in their employment any authority to make or give representation or warranty whatsoever in relation to this property.

This plan is for layout guidance only. Not drawn to scale unless stated. Windows and door openings are approximate. Whilst every care is taken in the preparation of this plan, please check all dimensions, shapes and compass bearings before making any decisions reliant upon them. (ID1127094)