



Knights Hill, SE27
OIEO £750,000

0208 702 9888
[pedderproperty.com](https://www.pedderproperty.com)

pedder



In general

- Semi detached family home
- Four bedrooms
- Three receptions
- Fitted kitchen
- Two bathrooms
- Off street parking
- Conservatory
- Well kept garden
- Fantastic location

In detail

A charming four bedroom Semi detached family home located on the popular Knights Hill, SE27.

This property offers spacious accommodation boasting nearly 1500 Sq ft and comprises of the following: Four double bedrooms, three reception rooms, fitted kitchen, two bathrooms, conservatory, well kept garden and off street parking for several cars.

Located close to Crown Point and walking distance to West Norwood High Street, Knight's Hill offers excellent transport links into London Bridge and London Victoria from West Norwood station as well as a host of bus connections into nearby Dulwich, Brixton, Herne Hill and Streatham.

The local amenities include the new Picture House Cinema, modern library and Health Centre.

Early viewings highly recommended.

EPC: E | Council Tax Band: D



Floorplan

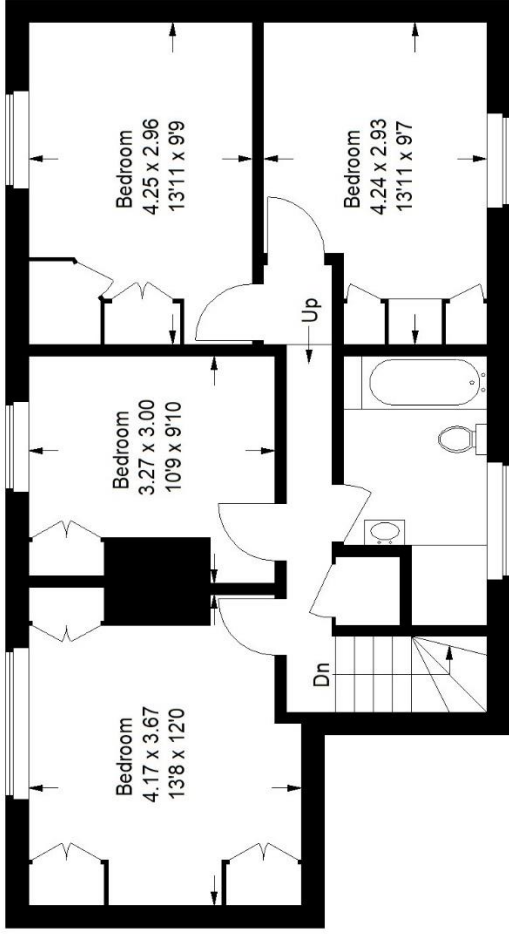
Knights Hill SE27

Approximate Gross Internal Area

Ground Floor = 74.4 sq m / 801 sq ft

First Floor = 64.2 sq m / 691 sq ft

Total = 138.6 sq m / 1492 sq ft



First Floor



Ground Floor

Copyright www.pedderproperty.com © 2023

These plans are for representation purposes only as defined by RICS - Code of Measuring Practice. Not drawn to Scale. Windows and door openings are approximate. Please check all dimensions, shapes and compass bearings before making any decisions reliant upon them.

Score	Energy rating	Current	Potential
92+	A		
81-91	B		81 B
69-80	C		
55-68	D		
39-54	E	47 E	
21-38	F		
1-20	G		

Pedder Property Ltd trading as Pedder for themselves and for the vendor/landlord of this property whose agents they are, give notice that (1) these particulars do not constitute any part of an offer or contract, (2) all statements contained within these particulars are made without responsibility on the part of Pedder or the vendor/landlord, (3) whilst made in good faith, none of the statements contained within these particulars are to be relied upon as a statement of representation or fact, (4) any intending purchaser/tenant must satisfy him/herself by inspection or otherwise as to the correctness of each of the statements contained within these particulars, (5) the vendor/landlord does not make or give either Pedder or any person in their employment any authority to make or give representation or warranty whatsoever in relation to this property.