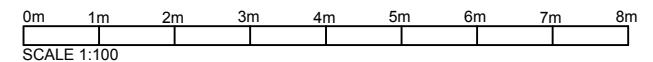
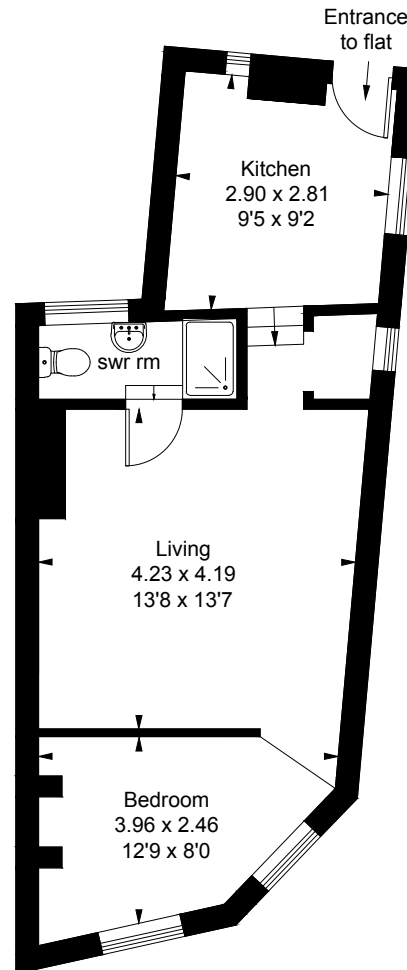


# Flat 84 Bramber Road W14 9PB

Approximate Gross Internal Area = 40.4 sq m / 435 sq ft



This plan is for layout guidance only. Drawn in accordance with RICS guidelines. Not drawn to scale unless stated. Windows & door openings are approximate. Whilst every care is taken in the preparation of this plan, please check all dimensions, shapes & compass bearings before making any decisions reliant upon them.