



Seymour Terrace, SE20  
£1,350pcm

0208 702 9333  
[pedderproperty.com](http://pedderproperty.com)

**pedder**



# In general

- Quiet location
- Generous loft space
- Convenient for parkland and transport links
- Elevated views
- Available now
- Offered unfurnished

# In detail

A warm and inviting one bedroom top floor period conversion quietly positioned within a small terrace of properties next to Betts Park available to let.

This light and bright space boasts, sash windows with elevated views, a socially open-plan kitchen, fitted bedroom storage, neutral decor, and direct access to a generous loft space.

Seymour Terrace is well placed for access to Crystal Palace, Anerley and both Penge East & West stations, local shops, and Crystal Palace Park.

EPC: D | Council Tax Band: B | Unfurnished | Available Now | HD: £311.53 | SD: £1,557.69





# Floorplan

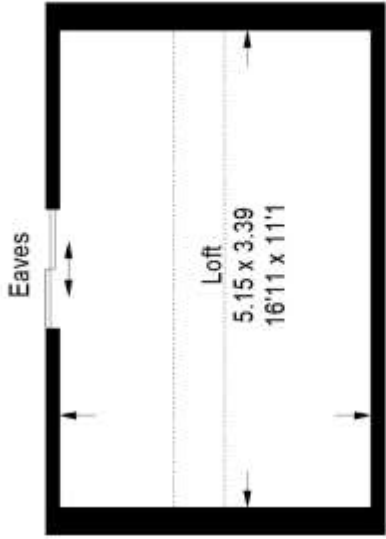
## Seymore Terrace, SE20

Approximate Gross Internal Area

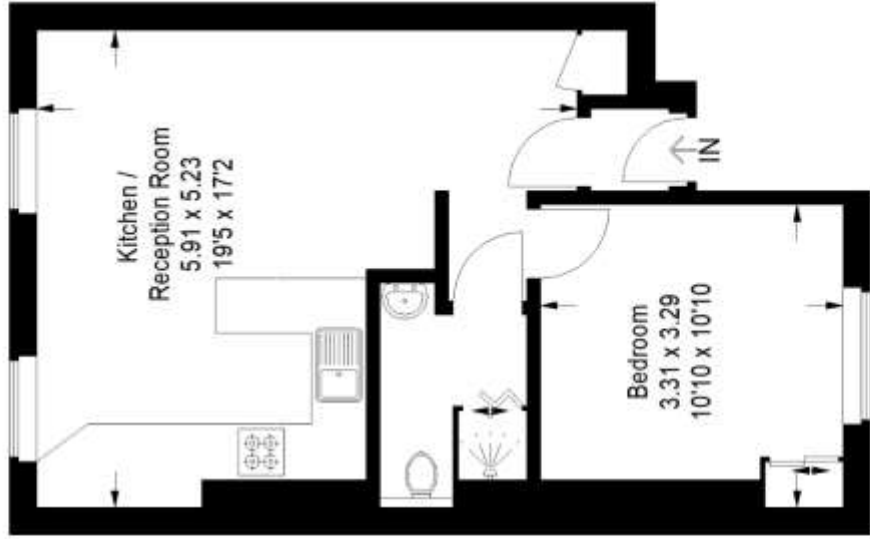
Second Floor = 41.9 sq m / 451 sq ft

Loft = 17.7 sq m / 191 sq ft

Total = 59.6 sq m / 642 sq ft



Loft



Second Floor

= Reduced headroom below 1.5 m / 5'0"

Copyright [www.pedderproperty.com](http://www.pedderproperty.com) © 2023  
 These plans are for representation purposes only as defined by RICS - Code of Measuring Practice. Not drawn to Scale. Windows and door openings are approximate. Please check all dimensions, shapes and compass bearings before making any decisions reliant upon them.

| Score | Energy rating | Current | Potential |
|-------|---------------|---------|-----------|
| 92+   | A             |         |           |
| 81-91 | B             |         |           |
| 68-80 | C             |         |           |
| 55-66 | D             | 57   D  | 66   D    |
| 38-54 | E             |         |           |
| 21-37 | F             |         |           |
| 1-20  | G             |         |           |

Pedder Property Ltd trading as Pedder for themselves and for the vendor/landlord of this property whose agents they are, give notice that (1) these particulars do not constitute any part of an offer or contract, (2) all statements contained within these particulars are made without responsibility on the part of Pedder or the vendor/landlord, (3) whilst made in good faith, none of the statements contained within these particulars are to be relied upon as a statement of representation or fact, (4) any intending purchaser/tenant must satisfy him/herself by inspection or otherwise as to the correctness of each of the statements contained within these particulars, (5) the vendor/landlord does not make or give either Pedder or any person in their employment any authority to make or give representation or warranty whatsoever in relation to this property.