

The Drive Mansions, SW6

Fulham, London

 LAWSONRUTTER





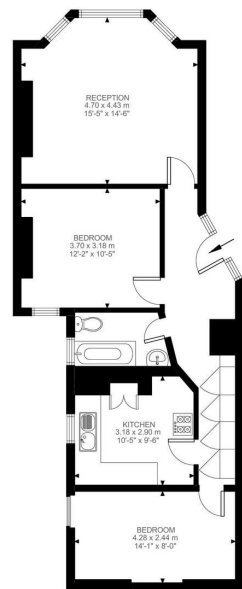
The Drive Mansions

£599,950

London SW6

Share of Freehold

A well presented raised ground floor two double bedroom mansion flat, with access to beautiful communal gardens, in this highly favoured and well maintained mansion development, within a short walk to Putney Bridge underground station (District Line). There is a light and airy reception room with the original fire place and cornicing, two double bedrooms, a modern kitchen and a neutral bathroom with a white suite. The Drive Mansions is ideally located for the excellent shops bars and restaurants on the Fulham Road and is a stone's throw to Bishops Park and the tennis courts, as well as the Thames Path. Offered with a share of freehold and no onward chain this property would suit both a first time buyer and an investor alike.



The Drive Mansions, SW6
Approximate Gross Internal Area
68.18 SQ.M / 734 SQ.FT

KEY: CH = Ceiling Height
[Restricted Head Height]

- * A WELL PRESENTED RAISED GROUND FLOOR MANSION APARTMENT IN THIS FAVOURED DEVELOPMENT * TWO DOUBLE BEDROOMS *
- * SPACIOUS RECEPTION ROOM
- * KITCHEN * BATHROOM * FABULOUS COMMUNAL GARDEN * NO ONWARD CHAIN *
- * SHORT WALK TO PUTNEY BRIDGE UNDERGROUND STATION (DISTRICT LINE) *
- * EXCELLENT SHOPS BARS & RESTAURANTS CLOSEBY *

All viewings by appointment through our **Fulham Office:**

T: 020 7731 3636

E: fulham@lawsonrutter.com

347 Fulham Palace Road, London SW6 6TB

In accordance with the Property Misdescription Act 1991, we wish to emphasise that the information given in these particulars is intended to help you decide whether you wish to view this property. Whilst every care is taken to ensure the accuracy of these particulars please note that all measurements are approximate and we are, for the accuracy of other information, reliant on what the seller has provided. We strongly recommend that you rely on your own inspections and those of your advisors to establish the details of any aspects which are of particular importance. Please note that we have not undertaken any survey of the property or the appliances within it and the buyer must rely on their own

