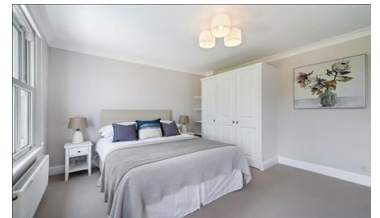




MUNSTER ROAD , PARSONS GREEN, FULHAM,
LONDON , SW6

£600,000 GUIDE (LEASEHOLD)

2 BEDROOMS, 1 RECEPTION, 1 BATHROOM



Located in the heart of Fulham, this beautifully presented 2-bedroom property offers a perfect blend of classic charm and contemporary living. The property has been renovated to a very high standard and is ready to move into.

Set over two levels it gives this property a real sense of space and light. Both bedrooms are very good sized doubles with plenty of space for storage.

Proximity to Parsons Green Tube Station: The flat's location just off Fulham Road road places it within walking distance of Parsons Green Tube, which is on the District Line. There are many bus routes also that provide excellent transport links to central London and other areas such as South Kensington, Chelsea, Knightsbridge, Hammersmith and others.

The River Thames tow path, Parsons Green and Bishops Park are great open spaces to enjoy on the doorstep. There are many restaurants/pubs/cafes to enjoy nearby ...

MAIN FEATURES

- Video tour
- Fully fitted kitchen with integrated appliances and ample storage
- Short walk to Parsons Green (District Line)
- Beautifully maintained interiors with neutral decor throughout

TRANSPORT LINKS

- 🚇 Parsons Green Underground Station - 0.34 miles
- 🚇 Putney Bridge Underground Station - 0.56 miles
- 🚇 Fulham Broadway Underground Station - 0.63 miles

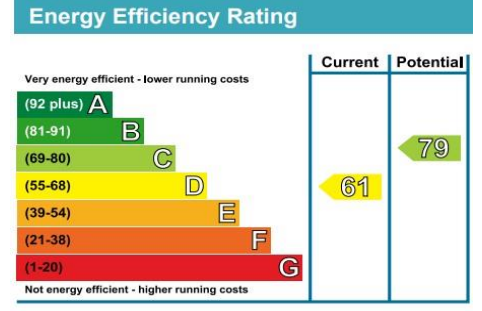
NEARBY SCHOOLS

- Bayonne Nursery School - 0.6
- St John's Walham Green Church of England Primary School - 0.05
- Fulham Cross Academy - 0.29



MUNSTER ROAD , PARSONS GREEN, FULHAM,
LONDON , SW6
£600,000 GUIDE (LEASEHOLD)
2 BEDROOMS, 1 RECEPTION, 1 BATHROOM

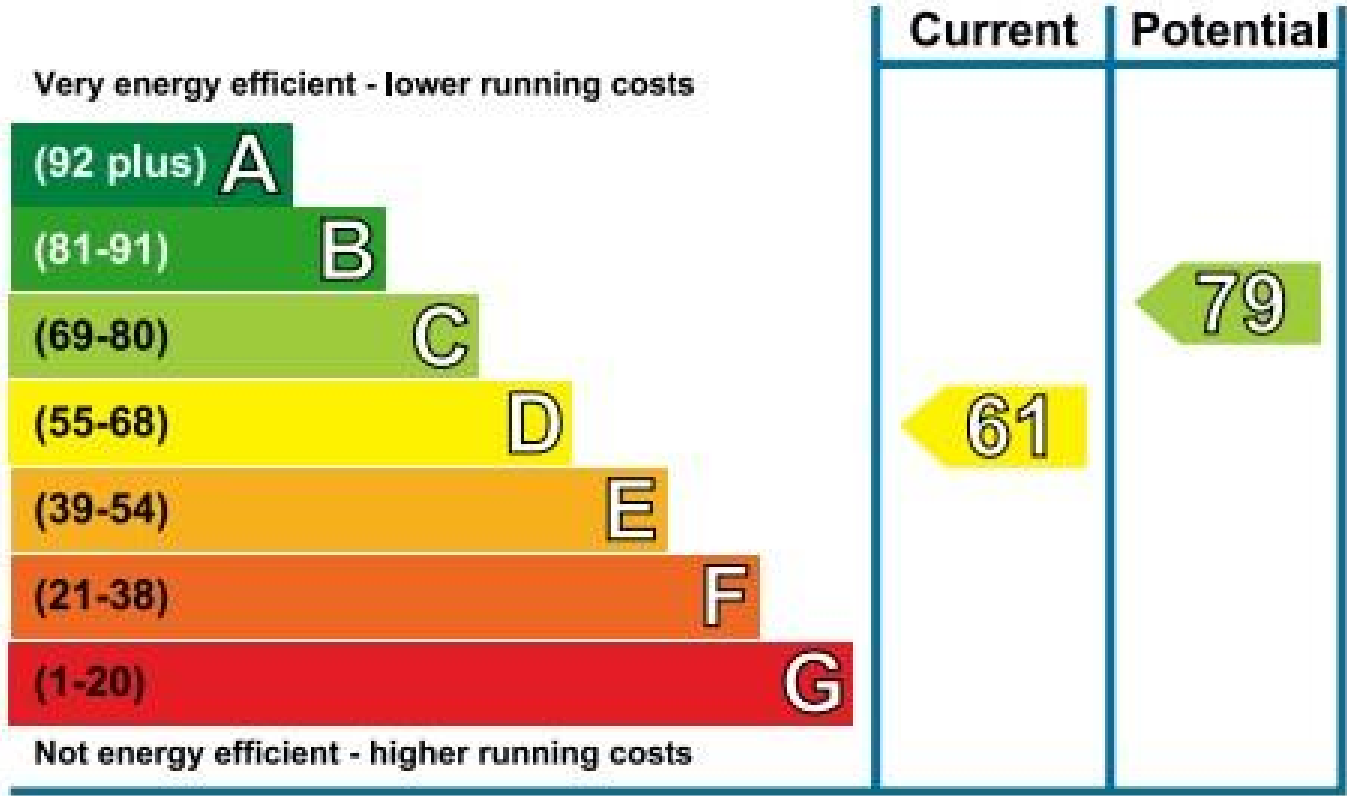
ADDITIONAL IMAGES:





MUNSTER ROAD , PARSONS GREEN, FULHAM,
LONDON , SW6
£600,000 GUIDE (LEASEHOLD)
2 BEDROOMS, 1 RECEPTION, 1 BATHROOM

Energy Efficiency Rating

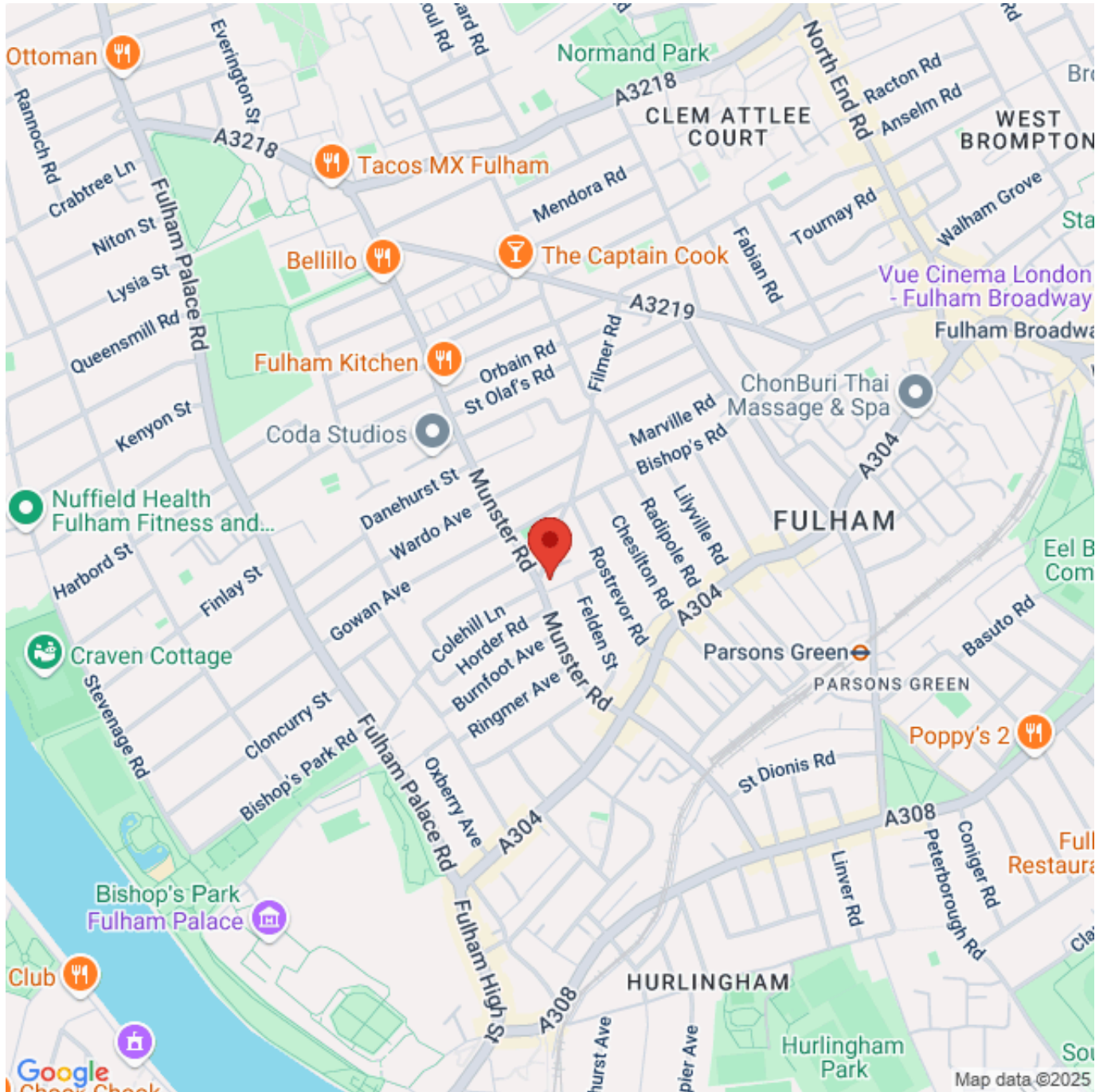




MUNSTER ROAD , PARSONS GREEN, FULHAM,
LONDON , SW6

£600,000 GUIDE (LEASEHOLD)

2 BEDROOMS, 1 RECEPTION, 1 BATHROOM



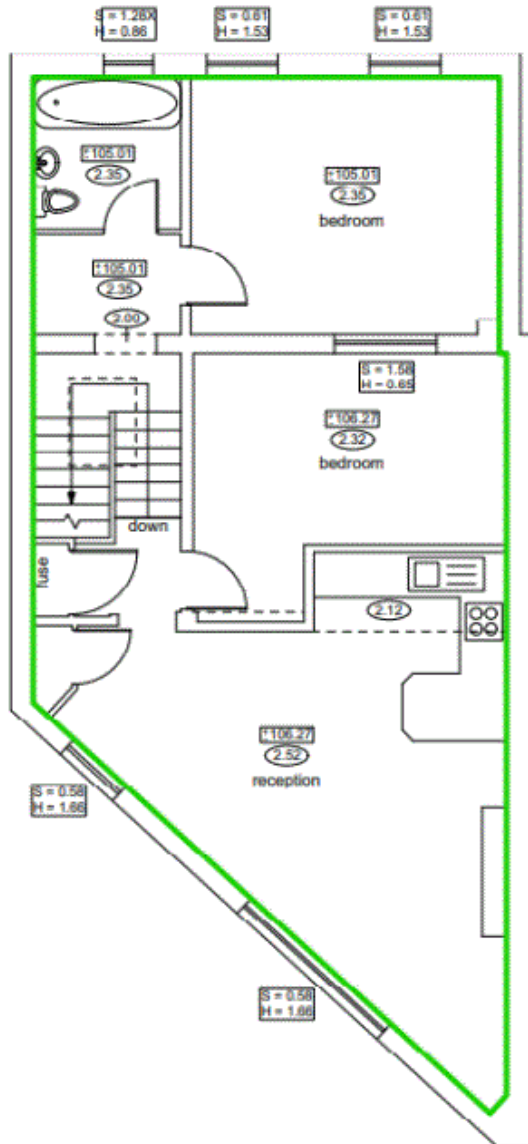


MUNSTER ROAD , PARSONS GREEN, FULHAM,
LONDON , SW6

£600,000 GUIDE (LEASEHOLD)

2 BEDROOMS, 1 RECEPTION, 1 BATHROOM

Second Floor



66.69 Sq M

FOR ILLUSTRATION PURPOSES ONLY

THIS FLOOR PLAN SHOULD BE USED AS A GENERAL OUTLINE FOR GUIDANCE ONLY AND DOES NOT CONSTITUTE IN WHOLE OR IN PART AN OFFER OR CONTRACT.
ANY INTENDING PURCHASER OR LESSEE SHOULD SATISFY THEMSELVES BY INSPECTION, SEARCHES, ENQUIRIES AND FULL SURVEY AS TO THE CORRECTNESS OF EACH STATEMENT.
ANY AREAS, MEASUREMENTS OR DISTANCES QUOTED ARE APPROXIMATE AND SHOULD NOT BE USED TO VALUE A PROPERTY OR BE THE BASIS OF ANY SALE OR LET.