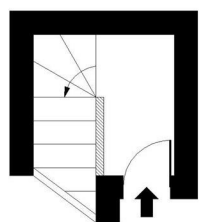


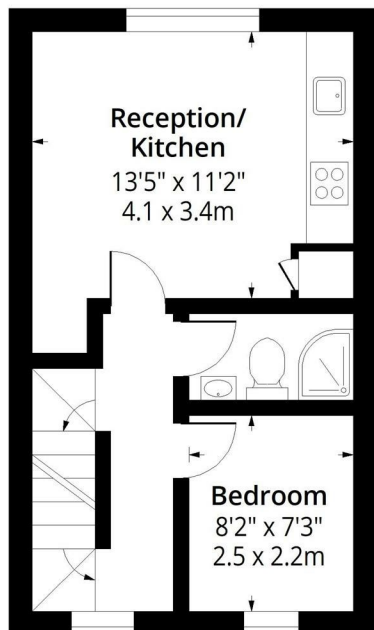
Bavaria Road, N19

Approx. Gross Internal Area 669 Sq Ft - 62.15 Sq M



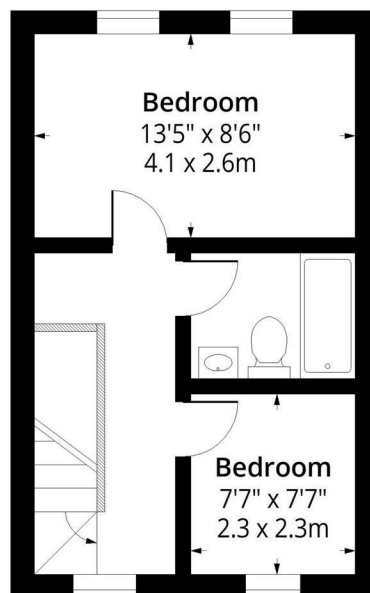
**First Floor
Entrance**

Floor Area 37 Sq Ft - 3.44 Sq M



Second Floor

Floor Area 327 Sq Ft - 30.38 Sq M



Third Floor

Floor Area 305 Sq Ft - 28.33 Sq M



Measured according to RICS IPMS2. Floor plan is for illustrative purposes only and is not to scale. Every attempt has been made to ensure the accuracy of the floor plan shown, however all measurements, fixtures, fittings and data shown are an approximate interpretation for illustrative purposes only. 1 sq m = 10.76 sq feet.

lpaplus.com

Date: 11/9/2024

51 BAVARIA ROAD - FLAT C LONDON, N19 4EU

£2,500 PER MONTH

Star Estates are pleased to offer for rent this newly built, second floor, 3 bedroom flat, off Hornsey Road, N19.

The flat benefits from great lighting, wooden flooring, gas central heating, double glazed windows, 3 good sized bedrooms and 2 bathrooms.

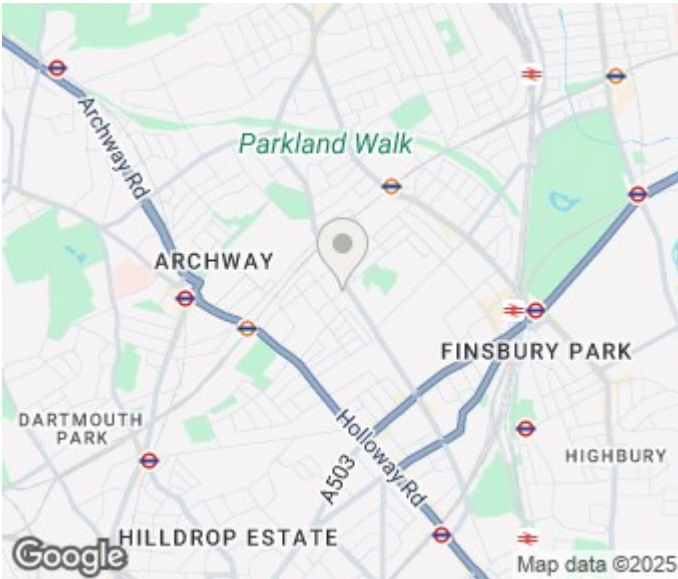
Located in a quiet street and a short walk from Finsbury Park Bus and Train Stations and Upper Holloway Overground Station, this flat has great links to Central London, and it benefits from a great array of shops and local amenities found on Holloway Road.

It is a split level flat, with a kitchen/diner, bathroom and a bedroom occupying the second floor, and 2 bedrooms and a bathroom with a shower occupying the third floor.

Viewing early is highly recommended as it is the ideal flat for a family, sharers and professionals!



Star Estates & Lettings



Energy Efficiency Rating		
	Current	Potential
Very energy efficient - lower running costs		
(92 plus) A		
(81-91) B		
(69-80) C		
(55-68) D		
(39-54) E		
(21-38) F		
(1-20) G		
Not energy efficient - higher running costs		
England & Wales	EU Directive 2002/91/EC	

Agents Note: Whilst every care has been taken to prepare these particulars, they are for guidance purposes only. All measurements are approximate and are for general guidance purposes only and whilst every care has been taken to ensure their accuracy, they should not be relied upon and potential buyers/tenants are advised to recheck the measurements

Amathus Investments Ltd
400-402 West Green Road
London
N15 3PX

020 8365 8877
info@starestates.com



Star Estates & Lettings