

Jubilee Mansions

West Kensington, London, W14

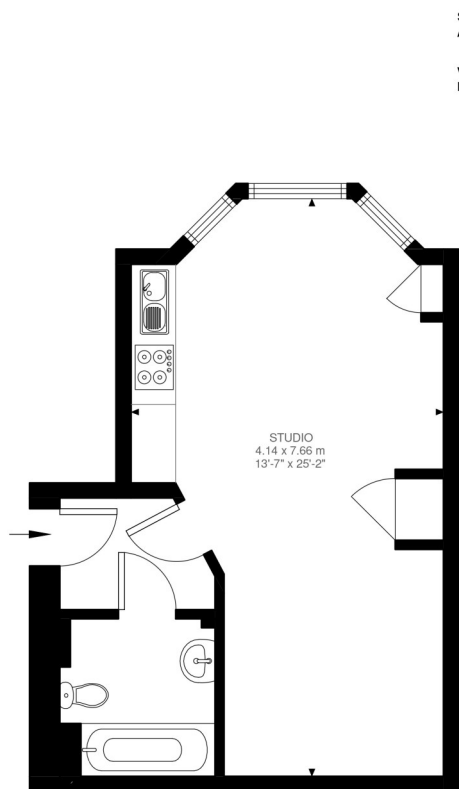




Jubilee Mansions

West Kensington, London, W14

Price Guide: £330,000



Ground Floor
366 ft²

Greyhound Road, W14
Approximate Gross Internal Area
34 SQ.M / 366 SQ.FT

Illustration for identification purposes only. Not to scale.
Floor Plan Drawn According To RICS Guidelines.

A bright and well-maintained studio flat set on the ground floor of Jubilee Mansions — a modern, purpose-built development in the heart of Barons Court. Built in 2012, the building is well regarded for its contemporary design and excellent transport connections.

The flat offers a smart, open-plan layout comprising a light-filled kitchen, reception and sleeping area, along with a modern bathroom and welcoming hallway with built-in storage. Stylish wooden flooring runs throughout, and the property is offered in excellent decorative condition.

Sold with a long lease and no onward chain, this is an ideal purchase for a first-time buyer, pied-à-terre seeker, or investor looking for an easy-to-let unit in a high-demand location.

Jubilee Mansions is conveniently located within a short walk of both West Kensington (District Line) and Barons Court (District & Piccadilly Lines) stations. The Queen's Club, local cafés, a quality butcher and two highly regarded pubs are all close by, making this a well-connected and desirable West London base.

Smart Open-Plan Layout | Stylish Wooden Flooring | Excellent Natural Light
Built-In Storage | Modern Bathroom | Long Leasehold | Excellent Decorative Condition
Leasehold | 366 Sq. Ft (34 Sq. M)

All viewings by appointment through
our **West Kensington Office**:

T: 020 7385 5020
E: westken@lawsonrutter.com

1 Barons Court Road, London
W14 9DP
www.lawsonrutter.com

In accordance with the Property Misdescription Act 1991, we wish to emphasise that the information given in these particulars is intended to help you decide whether you wish to view this property. Whilst every care is taken to ensure the accuracy of these particulars please note that all measurements are approximate and we are, for the accuracy of other information, reliant on what the seller has provided. We strongly recommend that you rely on your own inspections and those of your advisors to establish the details of any aspects which are of particular importance. Please note that we have not undertaken any survey of the property or the appliances within it and the buyer must rely on their own investigations prior to exchange of contracts.

