



Pleydell Avenue, SE19
£700,000

0208 702 9333
pedderproperty.com

pedder



In general

- Three double bedrooms
- Mid-century town house
- Off street parking
- Additional shower room
- Sough after cul de sac
- Access to a large green
- Moments from Crystal Palace station & park
- Light and bright accommodation

In detail

A three double bedroom mid-century town house forming a very popular cul de sac moments from Crystal Palace station.

This light and bright property offers flexible accommodation and is arranged over three floors. The entrance level comprises of the third bedroom, a WC, and a shaker-style kitchen that has plenty of storage space, with doors to outside. Upstairs is a through lounge / diner with stripped wood flooring and is effectively partitioned by a stairwell and supporting beams. The top floor houses two further bedrooms, a bathroom, and a separate shower room. Externally there is a neat low maintenance rear garden with a gate to a large green and off street parking at the front.

Pleydell Avenue is a quiet tree-lined road made up of mainly period houses and is a community-orientated neighbourhood. Transport links are excellent, as is access to the many shopping and leisure options which are nearby at the central Triangle.

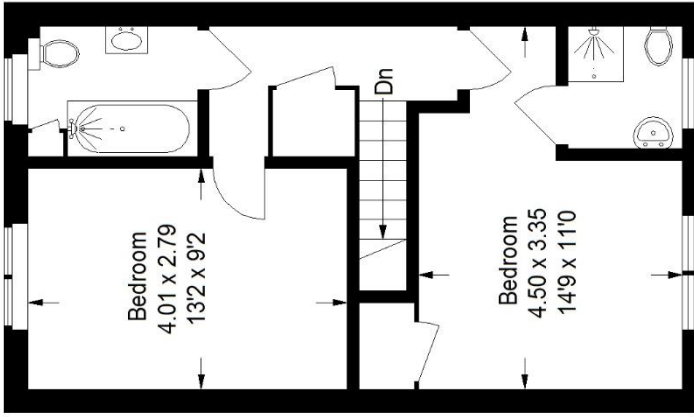
EPC: C | Council Tax Band: E



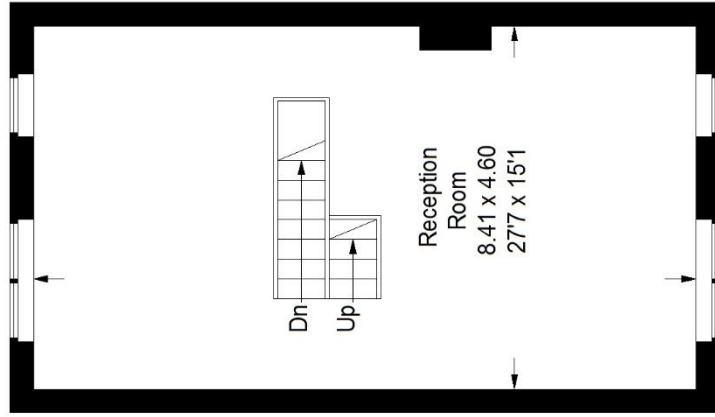
Floorplan

Pleydell Avenue, SE19

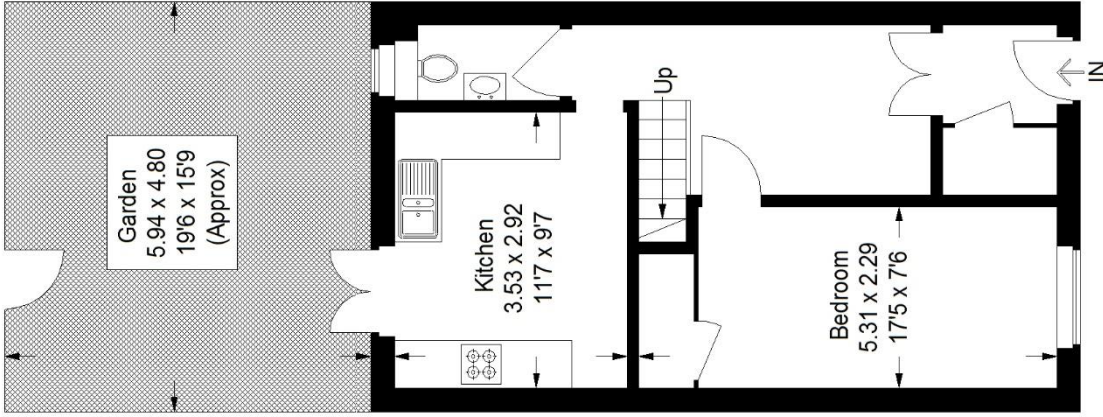
Approximate Gross Internal Area
115.9 sq m / 1248 sq ft



Second Floor



First Floor



Ground Floor

Copyright www.pedderproperty.com © 2024

These plans are for representation purposes only as defined by RICS - Code of Measuring Practice. Not drawn to Scale. Windows and door openings are approximate. Please check all dimensions, shapes and compass bearings before making any decisions reliant upon them.

| Score | Energy rating | Current | Potential |
|-------|---------------|---------|-----------|
| 92+ | A | | |
| 81-91 | B | | 85 B |
| 69-80 | C | 69 C | |
| 55-68 | D | | |
| 39-54 | E | | |
| 21-38 | F | | |
| 1-20 | G | | |

Pedder Property Ltd trading as Pedder for themselves and for the vendor/landlord of this property whose agents they are, give notice that (1) these particulars do not constitute any part of an offer or contract, (2) all statements contained within these particulars are made without responsibility on the part of Pedder or the vendor/landlord, (3) whilst made in good faith, none of the statements contained within these particulars are to be relied upon as a statement of representation or fact, (4) any intending purchaser/tenant must satisfy him/herself by inspection or otherwise as to the correctness of each of the statements contained within these particulars, (5) the vendor/landlord does not make or give either Pedder or any person in their employment any authority to make or give representation or warranty whatsoever in relation to this property.