

Radnor Terrace

West Kensington, London, W14

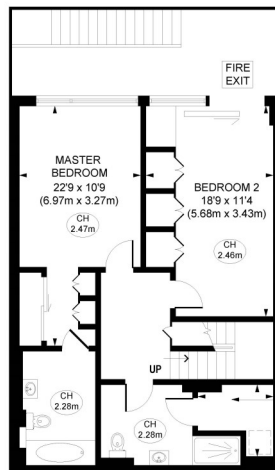




RADNOR TERRACE, W14



GROUND FLOOR
GROSS INTERNAL
FLOOR AREA 568 SQ FT



LOWER GROUND FLOOR
GROSS INTERNAL
FLOOR AREA 728 SQ FT

APPROX. GROSS INTERNAL FLOOR AREA 1296 sq. ft / 120.39 sq. m

Illustration for identification purposes only. Not to scale.

Radnor Terrace

West Kensington, London, W14

Price Guide: £1,600,000

This beautifully refurbished two-bedroom duplex apartment is arranged over the ground and lower ground floors of Bridgeman House, part of the prestigious 375 Kensington High Street development.

Spanning approx. 1,281 sq ft, the property has been upgraded throughout to a high standard. Renovations completed two years ago include a sleek new kitchen with upgraded Miele appliances (excluding the original fridge and microwave), wide-plank wood flooring, a Planika ethanol fireplace with bespoke alcove shelving, and Neatsmith fitted wardrobes in both bedrooms and the hallway. The flat has also been redecorated throughout, with new carpets and fresh paintwork.

The apartment enjoys a peaceful, inward-facing aspect over a landscaped courtyard, avoiding any exposure to the railway line. The ground floor features a bright, open-plan reception and kitchen, while the lower level offers two well-proportioned bedroom suites with access to a private courtyard patio — a rare feature in this central London setting.

Residents benefit from 24-hour concierge and on-site security, as well as exclusive access to a private gym, indoor swimming pool, spa, cinema room and business suite. Secure underground parking may be available by separate negotiation with the building's management or developer.

Ideally located just a short walk from Kensington High Street station (Circle & District Lines) and Kensington High Street itself, with its wide selection of shops, cafés, restaurants and green spaces — including Holland Park — all nearby.

Private Courtyard (Lower Ground Level) | Recently Refurbished Throughout
Underfloor Heating & Comfort Cooling | 24-Hour Concierge & On-Site Security
Residents' Gym, Pool, Spa, Cinema & Business Suite
Leasehold | 1296 Sq. Ft (120.39 Sq. M)

All viewings by appointment through
our **West Kensington Office**:

T: 020 7385 5020

E: westken@lawsonrutter.com

1 Barons Court Road, London
W14 9DP

www.lawsonrutter.com

In accordance with the Property Misdescription Act 1991, we wish to emphasise that the information given in these particulars is intended to help you decide whether you wish to view this property. Whilst every care is taken to ensure the accuracy of these particulars please note that all measurements are approximate and we are, for the accuracy of other information, reliant on what the seller has provided. We strongly recommend that you rely on your own inspections and those of your advisors to establish the details of any aspects which are of particular importance. Please note that we have not undertaken any survey of the property or the appliances within it and the buyer must rely on their own investigations prior to exchange of contracts.

Full Energy Performance Certificate available on request

