



Knights Hill SE27
£1,650 pcm

0208 702 9888
pedderproperty.com

pedder



In general

- Period conversion
- Two double bedrooms
- Large lounge
- Fitted kitchen
- Modern bathroom
- Located on the top floor
- Alocated offstreet parking
- Ample storage
- Access to the loft

In detail

A bright and airy two double bedroom Victorian conversion located on the popular Knights Hill, SE27.

The property comprises, two double bedrooms, modern bathroom, large lounge and a fitted kitchen.

Located between West Norwood High Street and Crown Point, Knights Hill offers excellent transport links into London Bridge and London Victoria from West Norwood station as well as a host of bus connections into nearby Dulwich, Brixton, Herne Hill and Streatham.

Improved local amenities include the new Picture House Cinema, modern library and Health Centre.

EPC: C | Council Tax Band: C | Furnished | Available Immediately | Holding Deposit: £380.77 | Security Deposit: £1,903.85



Floorplan

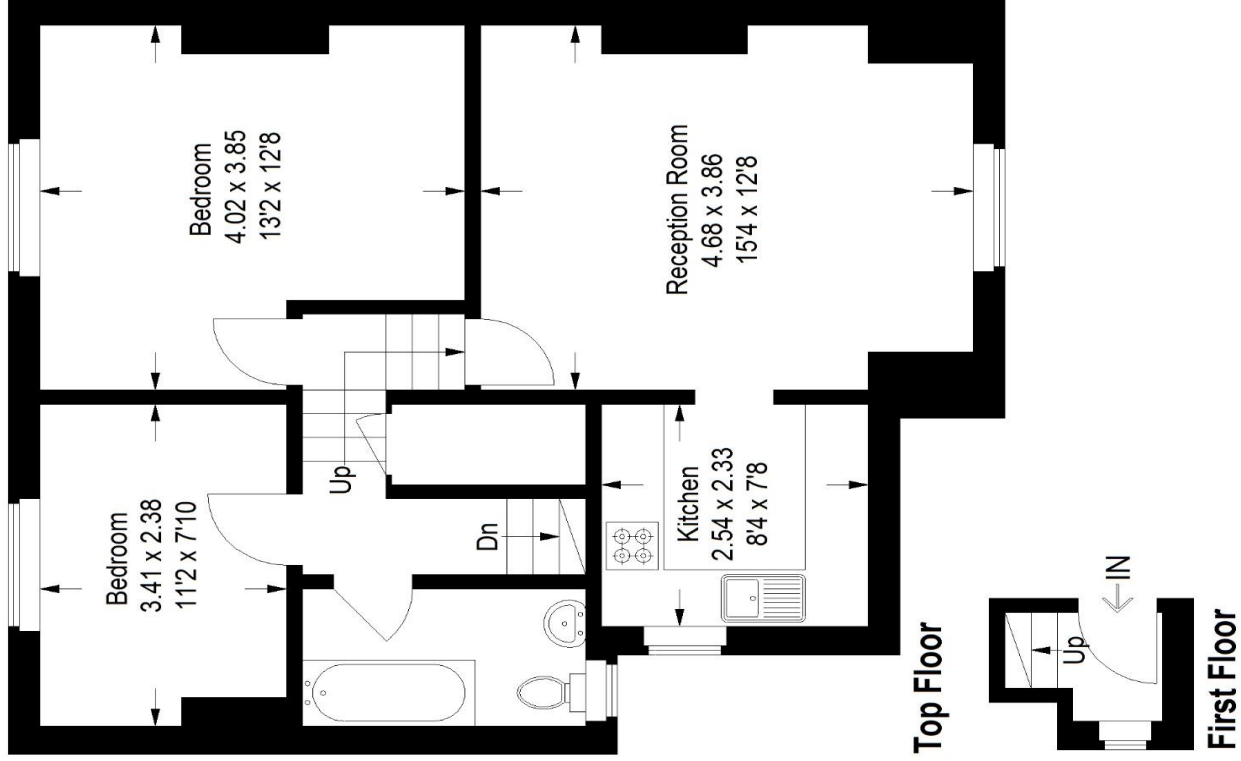
Knights Hill SE27

Approximate Gross Internal Area

First Floor = 1.5 sq m / 16 sq ft

Top Floor = 59.5 sq m / 640 sq ft

Total = 61.0 sq m / 656 sq ft



Copyright www.pedderproperty.com © 2022
 These plans are for representation purposes only
 as defined by RICS - Code of Measuring Practice.
 Not drawn to Scale. Windows and door openings
 are approximate. Please check all dimensions,
 shapes and compass bearings before making any
 decisions reliant upon them.

Score	Energy rating	Current	Potential
92+	A		
81-91	B		
69-80	C	69 c	75 c
55-68	D		
39-54	E		
21-38	F		
1-20	G		

Pedder Property Ltd trading as Pedder for themselves and for the vendor/landlord of this property whose agents they are, give notice that (1) these particulars do not constitute any part of an offer or contract, (2) all statements contained within these particulars are made without responsibility on the part of Pedder or the vendor/landlord, (3) whilst made in good faith, none of the statements contained within these particulars are to be relied upon as a statement of representation or fact, (4) any intending purchaser/tenant must satisfy him/herself by inspection or otherwise as to the correctness of each of the statements contained within these particulars, (5) the vendor/landlord does not make or give either Pedder or any person in their employment any authority to make or give representation or warranty whatsoever in relation to this property.