

Spencer Mews

Hammersmith, London, W6





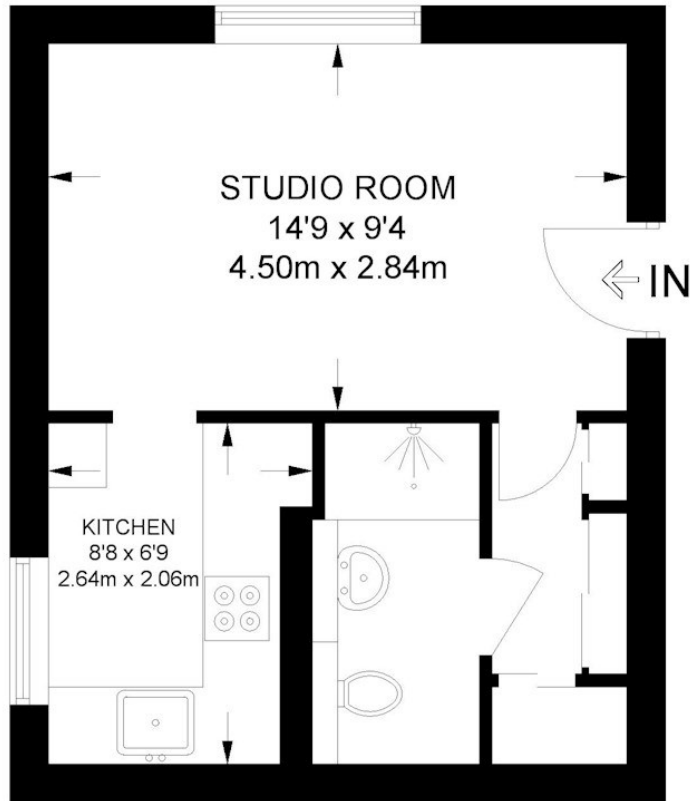
Spencer Mews

Hammersmith, London, W6

Price Guide: £250,000

A well-presented studio flat located in a much sought-after development in a quiet cul-de-sac within a 8-10 minute walk to Barons Court underground station. This flat is ideal for a first-time buyer or as a pied-a-terre.

The flat benefits from an allocated parking space, a fully-fitted kitchen offers maximum storage space and a bathroom. Spencer Mews is close to all local amenities including Waitrose, Sainsburys, Café Nero, Pret-a-Manger, The Pear Tree pub, as well all the amazing pubs on the River Thames towpath. No onward chain. Offered with a Long lease.



FIRST FLOOR

APPROXIMATE GROSS INTERNAL AREA
272 SQ FT / 25.3 SQ M

This plan has been drawn for illustrative and identification purposes only.

Well presented studio flat in much sought after development
 Quiet cul-de sac | Studio room | Fully fitted kitchen | Bathroom
 Ideal first time buy/pied -a -terre | Short walk to River Thames towpath | No onward chain
 Close to transport & a variety of amenities | 272 Sq. Ft. (25.3 Sq. M.) Leasehold (long lease)

All viewings by appointment through our **Hammersmith Office**:

T: 020 7385 7000
E: hammersmith@lawsonrutter.com

192 Fulham Palace Road, London W6 9PA

In accordance with the Property Misdescription Act 1991, we wish to emphasise that the information given in these particulars is intended to help you decide whether you wish to view this property. Whilst every care is taken to ensure the accuracy of these particulars please note that all measurements are approximate and we are, for the accuracy of other information, reliant on what the seller has provided. We strongly recommend that you rely on your own inspections and those of your advisors to establish the details of any aspects which are of particular importance. Please note that we have not undertaken any survey of the property or the appliances within it and the buyer must rely on their own investigations prior to exchange of contracts.

