



Farquhar Road, SE19
£675,000

0208 702 9333
pedderproperty.com

pedder



In general

- 1218 sq ft / 113.2 sq m
- Three bedroom split level conversion
- Characterful features throughout
- Spacious kitchen / diner
- Four piece bathroom
- Separate WC
- Central location
- Large reception room with elevated City views

In detail

An exceptionally well proportioned three bedroom split level period conversion forming a prime road in central Crystal Palace.

This characterful accommodation is arranged over three levels and boasts excellent room proportions and contemporary upgrades that make for a warm and inviting new home. Accessed via the ground floor, stairs lead to a separate WC on the first and an 18ft 4 reception room with a light-filled bay window which boasts far-reaching elevated City views and a bright southerly aspect. The kitchen / diner is equally well proportioned and includes white high gloss cabinetry with integrated appliances and stone surfaces - an ideal space for those who enjoy cooking and entertaining. The remaining accommodation comprises of three bedrooms (two with fitted storage), two landing areas which could be perfect for home working spaces, and a stylishly finished bathroom with a separate walk-in shower, Duravit sanitary ware, and under floor heating. Further notable points include exposed brickwork, replacement double glazed sash windows, original fireplaces, oak flooring with acoustic underlay, and ceiling coving. There is also a large loft space with services (water and electricity) in place for conversion (STP).

Farquhar Road is moments from everything that the vibrant Triangle has to offer including an Everyman cinema and a variety of independent boutiques and cafes. Both Gipsy Hill and Crystal Palace stations are within easy reach, as is Crystal Palace park which hosts a variety of events throughout the year and is a large green space to enjoy on weekends.

EPC: C | Council Tax Band: D | Lease: 115 years remaining | SC: £1,455 | GR: £10 | BI: Included in service charge

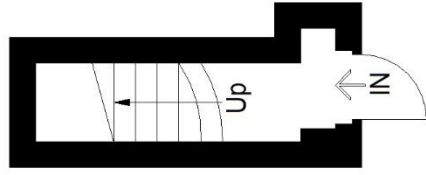


Floorplan

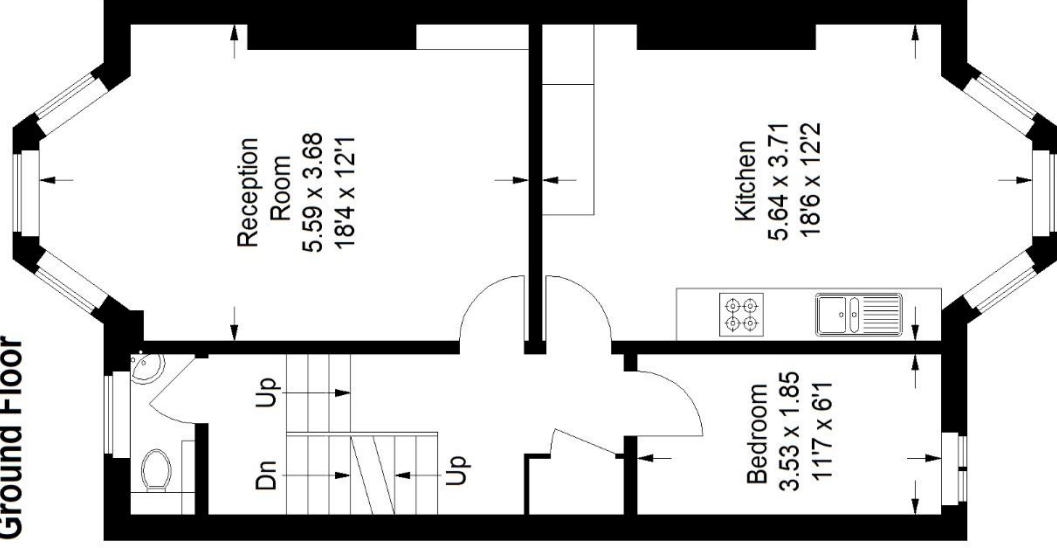
Farquhar Road, SE19

Approximate Gross Internal Area

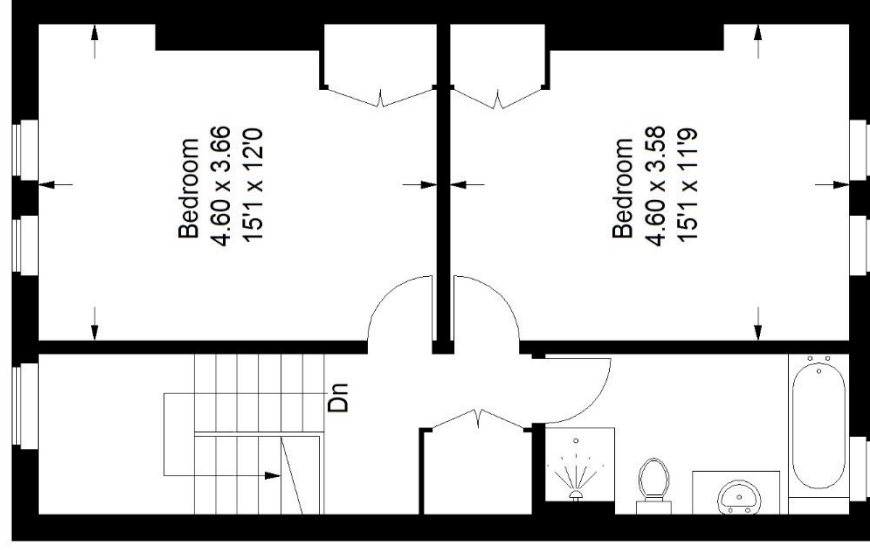
113.2 sq m / 1218 sq ft



Ground Floor



First Floor



Second Floor

Copyright www.pedderproperty.com © 2024

These plans are for representation purposes only as defined by RICS - Code of Measuring Practice. Not drawn to Scale. Windows and door openings are approximate. Please check all dimensions, shapes and compass bearings before making any decisions reliant upon them.

Score	Energy rating	Current	Potential
92+	A		
81-91	B		
69-80	C	69 C	77 C
55-68	D		
39-54	E		
21-38	F		
1-20	G		

Pedder Property Ltd trading as Pedder for themselves and for the vendor/landlord of this property whose agents they are, give notice that (1) these particulars do not constitute any part of an offer or contract, (2) all statements contained within these particulars are made without responsibility on the part of Pedder or the vendor/landlord, (3) whilst made in good faith, none of the statements contained within these particulars are to be relied upon as a statement of representation or fact, (4) any intending purchaser/tenant must satisfy him/herself by inspection or otherwise as to the correctness of each of the statements contained within these particulars, (5) the vendor/landlord does not make or give either Pedder or any person in their employment any authority to make or give representation or warranty whatsoever in relation to this property.