

Becklow Road, W12

London





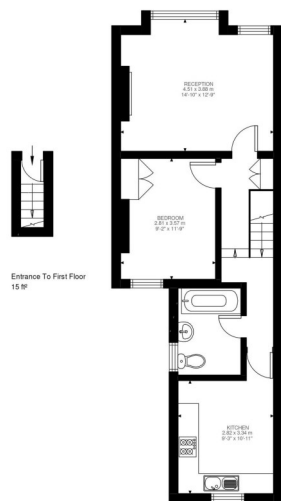
Becklow Road

London W12

£850,000

Freehold

An excellent opportunity to acquire a freehold house in this popular residential area off the Askew Road, with excellent amenities and Wendell Park close by. Currently divided into two flats, there is planning in place with H&FBC to extend both properties (2024/01389/FUL). Consent could also be sought to turn the property back into an extended house. With no onward chain, early viewing of this property is recommended.

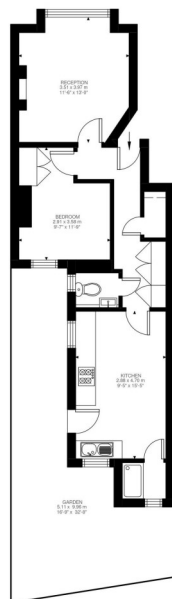


Entrance To First Floor
15'6"

First Floor
657 sq'

Beck
Approx
53.10 t

Illustration for identification purposes only. Not to scale.
Floor Plan Drawn According To RICS Guidelines.



Ground Floor
531 sq'

Becklow Road, W12
Approximate Gross Internal Area
49.30 SQ.M / 531 SQ.FT

Illustration for identification purposes only. Not to scale.
Floor Plan Drawn According To RICS Guidelines.

A HOUSE DIVIDED INTO TWO FLATS
RECEPTION ROOM

TWO KITCHEN BREAKFAST ROOMS * THREE DOUBLE BEDROOMS

TWO SEPERATE W/C * TWO SHOWER ROOMS

THE GARDEN IS DEMISED TO THE GROUND FLOOR FLAT

PLANNING IN PLACE TO EXTEND BOTH FLATS (APP NO: 2024/01389/FUL)

CHAIN FREE * FREEHOLD

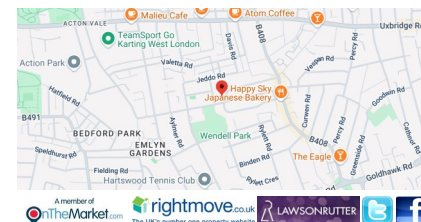
All viewings by appointment through our
Fulham Office:

T: 020 7731 3636

E: fulham@lawsonrutter.com

347 Fulham Palace Road, London
SW6 6TB

In accordance with the Property Misdescription Act 1991, we wish to emphasise that the information given in these particulars is intended to help you decide whether you wish to view this property. Whilst every care is taken to ensure the accuracy of these particulars please note that all measurements are approximate and we are, for the accuracy of other information, reliant on what the seller has provided. We strongly recommend that you rely on your own inspections and those of your advisors to establish the details of any aspects which are of particular importance. Please note that we have not undertaken any survey of the property or the appliances within it and the buyer must rely on their own



A member of
onTheMarket.com

rightmove 2024
The UK's number one property website

LAWSONRUTTER