



Thurlow Park Road, SE21
Offers in excess £320,000

020 8702 8111
pedderproperty.com

pedder



In general

- A stunning split-level apartment
- Set within an exclusive luxury apartment development
- Exceptionally spacious - 1,287 sq ft
- Three bedrooms, two bathrooms (one en-suite)
- Large 31' x 15' lounge/dining room
- Modern integrated kitchen
- Private & secluded patio garden, further private terrace
- Off street parking
- Shared ownership - 40% share. (full value OIEO £800,000)
- Monthly rent £1,091.66 + Service charge £268.53

In detail

Shared ownership - 40% share. (full price OIEO £800,000).

A stunning split-level apartment set within this exclusive development of just nine luxury apartments, sold including ownership of private off-street parking and sizeable individual bike shed/storage.

This lovely property is beautifully presented throughout and is finished to an extremely high specification including floor-to-ceiling windows, underfloor heating throughout, premium integrated Sonos sound system, motorised blackout blinds in every room and security entrance. With a gross internal area of 1,287 sq ft the property offers exceptional living and entertaining space over two floors comprising master bedroom with en-suite bathroom and walk-in wardrobe, two further bedrooms, second bathroom, spacious 31' x 15' lounge/dining room open-plan to a contemporary integrated kitchen. From the lounge large floor to ceiling glazed doors give access to a rear terrace. From the master bedroom there is access to a lovely, secluded patio garden. There is also a large communal garden to the rear.

The property is very well located for access to both Dulwich Village and Herne Hill which offer a variety of shops, cafes, restaurants and popular parks and for access to OFSTED 'outstanding' primary and secondary state schools as well the renowned independent schools including James Allen's Girls School, Alleyn's School and Dulwich College.

Rail links to central London are from nearby Tulse Hill (London Bridge/Thameslink), West Dulwich (London Victoria/Blackfriars) and Herne Hill (Victoria/Blackfriars).

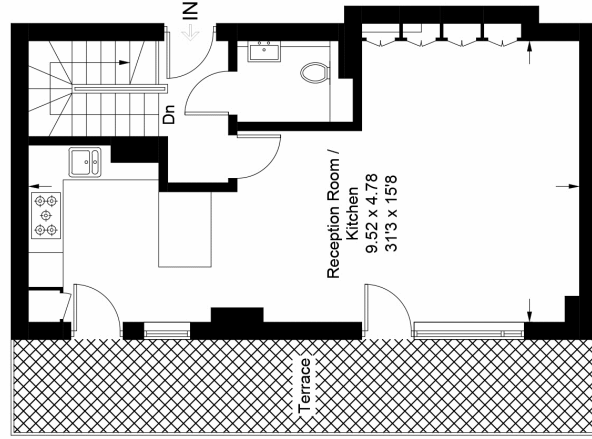
(Property offered as Shared Ownership).

EPC: B | Council Tax Band: D | Lease Term Remaining: 117 Years | GR: Nil | Monthly Rent: £1,091.66 | SC: £268.53 | BI: Included in Service Charge



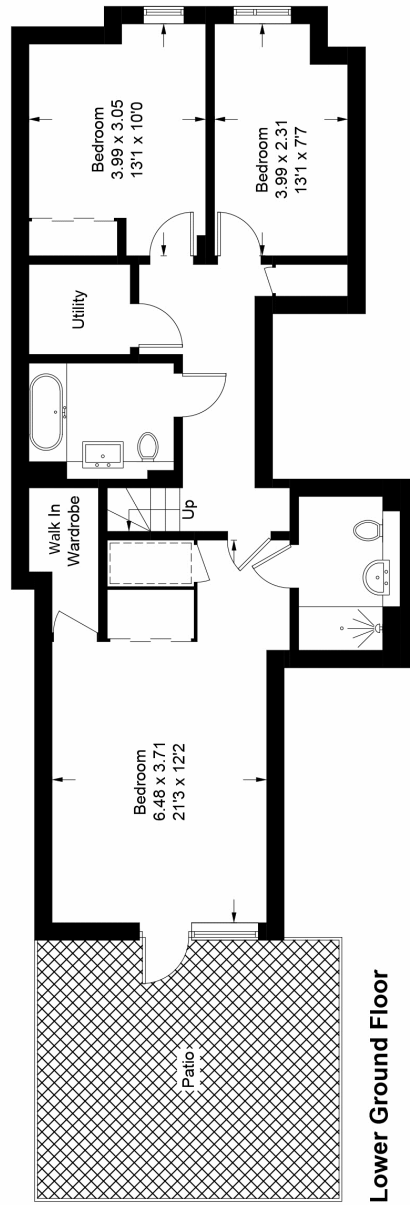
Floorplan

Thurlow Park Road, SE21
 Approximate Gross Internal Area = 47.3 sq m / 509 sq ft
 Lower Ground Floor = 72.3 sq m / 778 sq ft
 Total = 119.6 sq m / 1287 sq ft



Ground Floor

Gross internal area of 711 sq ft



Lower Ground Floor

Copyright www.pedderproperty.com © 2024
 These plans are for representation purposes only as defined by RICS - Code of Measuring Practice.
 Not drawn to Scale. Windows and door openings are approximate. Please check all dimensions,
 shapes and compass bearings before making any decisions reliant upon them.

Score	Energy rating	Current	Potential
92+	A		
81-91	B	85 B	85 B
69-80	C		
55-68	D		
39-54	E		
21-38	F		
1-20	G		

Pedder Property Ltd trading as Pedder for themselves and for the vendor/landlord of this property whose agents they are, give notice that (1) these particulars do not constitute any part of an offer or contract, (2) all statements contained within these particulars are made without responsibility on the part of Pedder or the vendor/landlord, (3) whilst made in good faith, none of the statements contained within these particulars are to be relied upon as a statement of representation or fact, (4) any intending purchaser/tenant must satisfy him/herself by inspection or otherwise as to the correctness of each of the statements contained within these particulars, (5) the vendor/landlord does not make or give either Pedder or any person in their employment any authority to make or give representation or warranty whatsoever in relation to this property.