

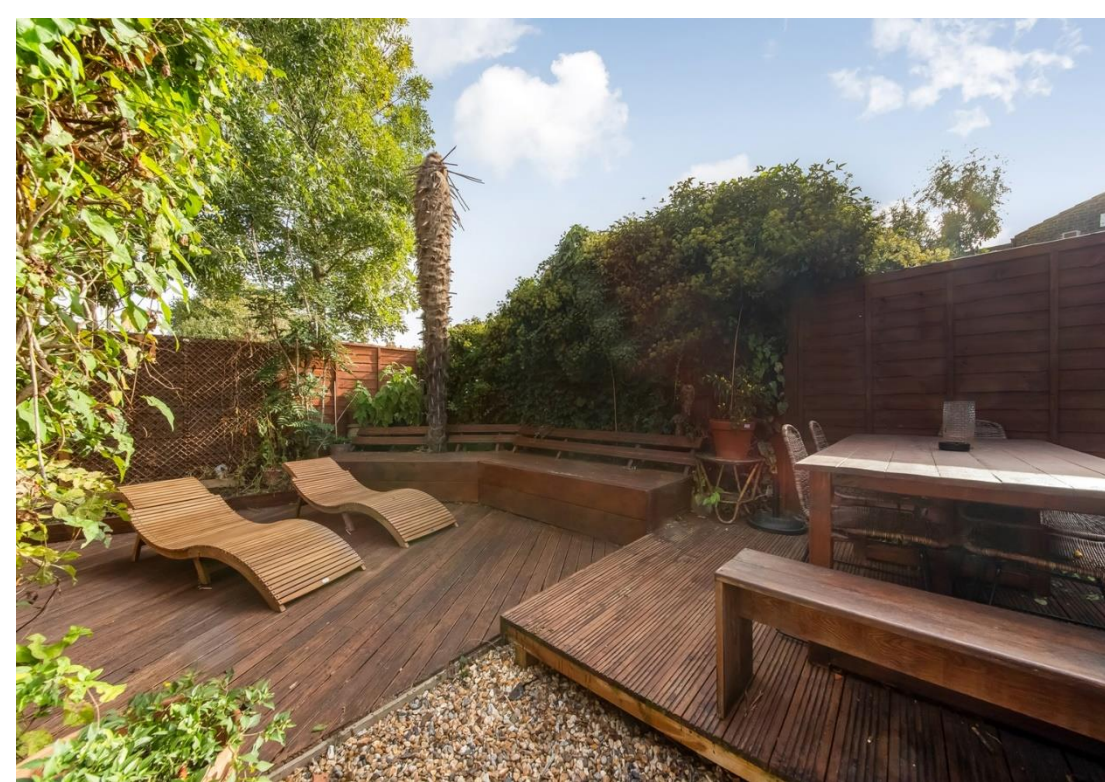


Surrey Road, SE15  
£500,000

0208 702 9666  
[pedderproperty.com](https://www.pedderproperty.com)

**pedder**







# In general

- South facing private garden
- Purpose built
- Two double bedrooms
- Close to Ivydale Primary school
- Close to Peckham common
- Spread over 645 sqft
- Onward chain is complete

# In detail

A large, beautifully presented, two double-bedroom south facing garden flat for sale on Surrey Road.

Boasting over 645 sq ft, the property is situated on the first floor and comprises two double bedrooms, beautiful, modern bathroom suite, separate kitchen and a spacious reception room with benefit of a private garden.

The location offers easy access into The City, Canary Wharf & London Bridge with regular services from Nunhead & Honor Oak Park train stations as well as bus connections into the neighboring Peckham, East Dulwich and Brockley.

There is an abundance of green space and parks such as Peckham Rye, Nunhead Green and Dulwich Park as well as excellent pubs, cafes nearby.

Early viewings are highly recommended, call the Pedder Peckham Sales Team today to arrange your viewing.

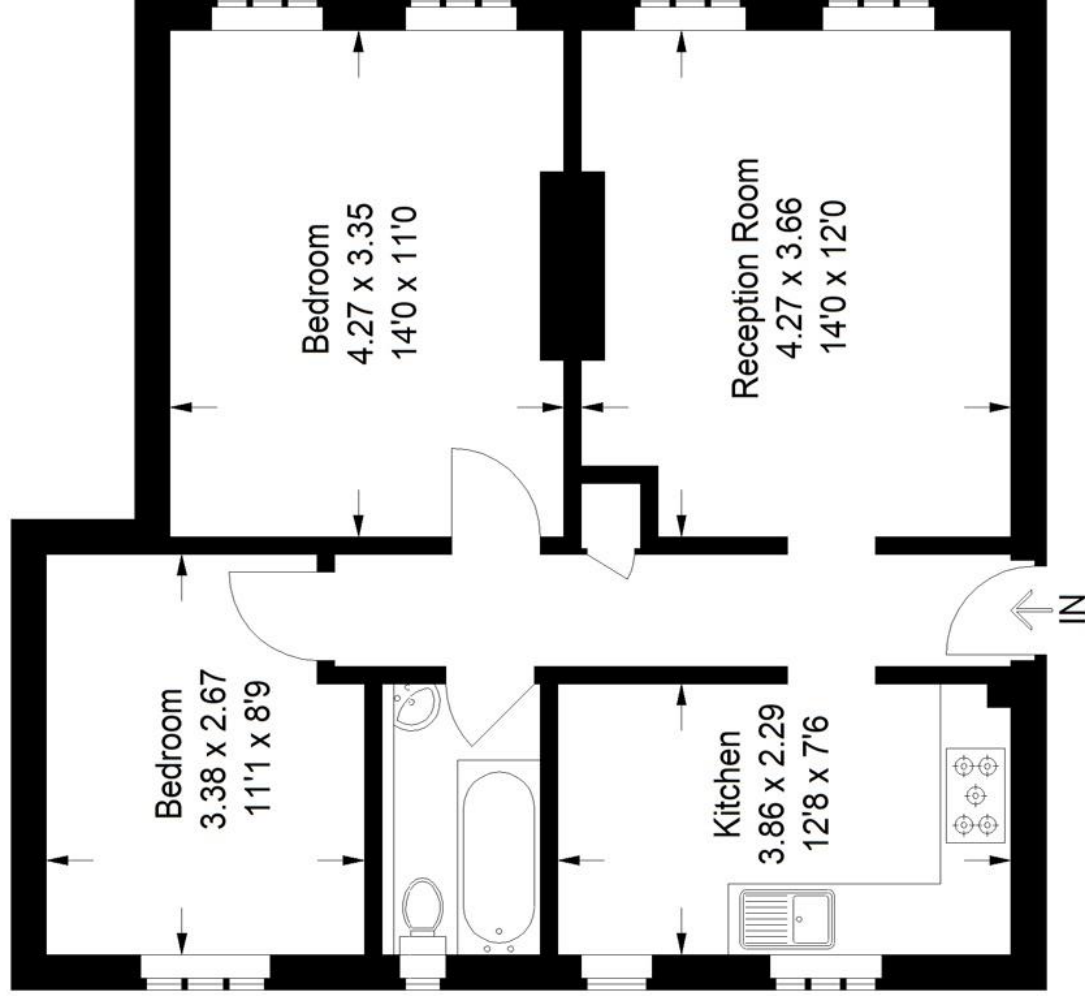
EPC: E | Council Tax Band: B | Lease : 95 Years remaining | GR: £10pa | SC: £1016.59pa | BI: Incl in SC



# Floorplan

## Surrey Road, SE15

Approximate Gross Internal Area  
59.9 sq m / 645 sq ft



## First Floor

Copyright [www.pedderproperty.com](http://www.pedderproperty.com) © 2023

These plans are for representation purposes only as defined by RICS - Code of Measuring Practice. Not drawn to Scale. Windows and door openings are approximate. Please check all dimensions, shapes and compass bearings before making any decisions reliant upon them.