



Wordsworth Road, SE20
£299,999

0208 702 9777
[pedderproperty.com](https://www.pedderproperty.com)

pedder



In general

- Private garden
- Chain free
- Double bedroom
- Great transport link
- Close to Crystal Palace Park
- Share of freehold

In detail

A generously proportioned one-bedroom apartment, offered with a private southwest facing garden, and no onwards chain.

Welcomed with high ceilings, a large bay window to the front, as well as a neutral décor throughout, this property enjoys plenty of natural light, and a matured garden with space to make your own. Established over 29.7ft, there is plenty of space to develop and design a relaxing yet entertaining space.

The property also benefits from a sophisticated double bedroom, with further rewards of fitted wardrobes, and views of the private garden.

Wordsworth Road is an attractive residential road, ideally located with access to Crystal Palace, and excellent transport links including Penge East (London Victoria), Penge West Overground.

EPC: D | Council Tax Band: B | Lease: 118 Years Remaining | SC: £0 | GR: £0 | BI: £304

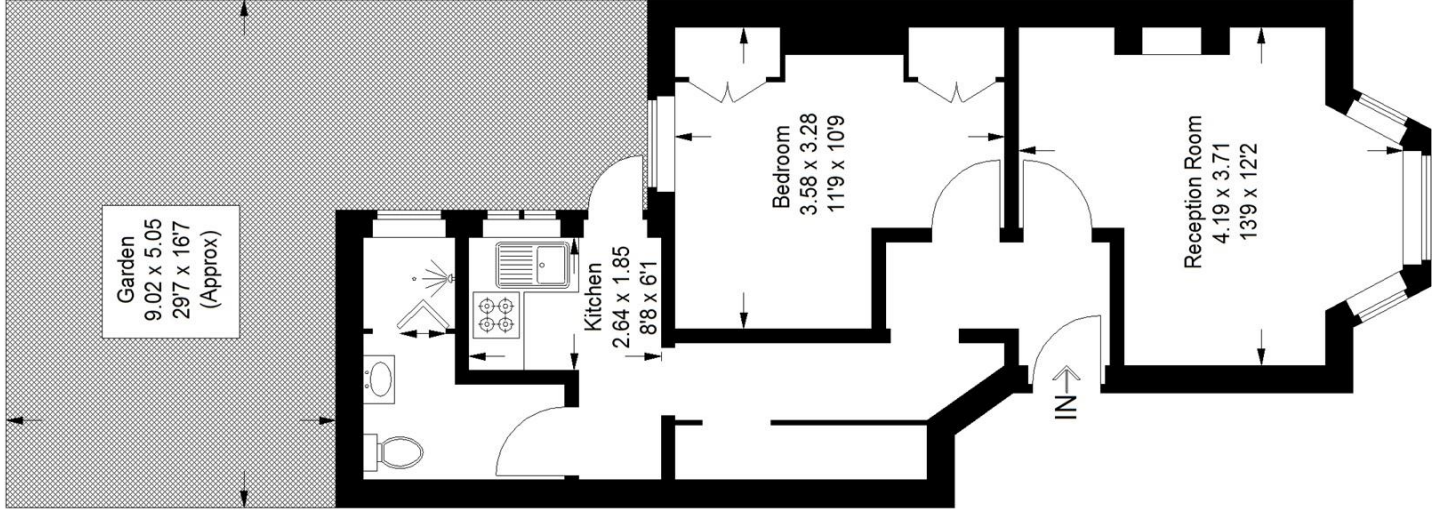


Floorplan

Wordsworth Road, SE20



Approximate Gross Internal Area
40.8 sq m / 439 sq ft



Ground Floor

Copyright www.pedderproperty.com © 2024
These plans are for representation purposes only as defined by RICS - Code of Measuring Practice. Not drawn to Scale. Windows and door openings are approximate. Please check all dimensions, shapes and compass bearings before making any decisions reliant upon them.

Score	Energy rating	Current	Potential
92+	A		
81-91	B		
69-80	C		
55-68	D	59 D	74 C
39-54	E		
21-38	F		
1-20	G		

Pedder Property Ltd trading as Pedder for themselves and for the vendor/landlord of this property whose agents they are, give notice that (1) these particulars do not constitute any part of an offer or contract, (2) all statements contained within these particulars are made without responsibility on the part of Pedder or the vendor/landlord, (3) whilst made in good faith, none of the statements contained within these particulars are to be relied upon as a statement of representation or fact, (4) any intending purchaser/tenant must satisfy him/herself by inspection or otherwise as to the correctness of each of the statements contained within these particulars, (5) the vendor/landlord does not make or give either Pedder or any person in their employment any authority to make or give representation or warranty whatsoever in relation to this property.