



Longfield House, 18-20 Uxbridge Road, Ealing, W5

£399,950

For Sale



- ART DECO
- TWO DOUBLE BEDROOMS
- SEPARATE MODERN KITCHEN
- NO ONWARD CHAIN
- PRIME LOCATION
- LARGE RECEPTION
- TWO BATHROOMS
- PRIVATE PARKING SPACE

Beautiful and spacious, Art deco top floor two double bedroom apartment located in the heart of Ealing Broadway. This bright and airy property offers a large reception room with views over the grounds, a separate streamlined modern fully fitted kitchen, two double bedrooms (one with en-suite) and a three piece suite family bathroom. Private parking space.

Longfield House is in the heart of Ealing which is known for its leafy public spaces. Ealing Broadway is situated close by which offers a large array of shops, restaurants and cafes. Ealing Broadway Station is 0.36 miles away and contains London Underground, National Rail, Great Western Railway, and will have the future Crossrail. Uxbridge Road is a major road connecting Ealing, Hanwell, Acton, Shepherds Bush, Hayes and Southall. Three bus routes serve the entire road: 207, 427 and 607. To arrange a viewing, please call Rolfe East on 020 8567 2242

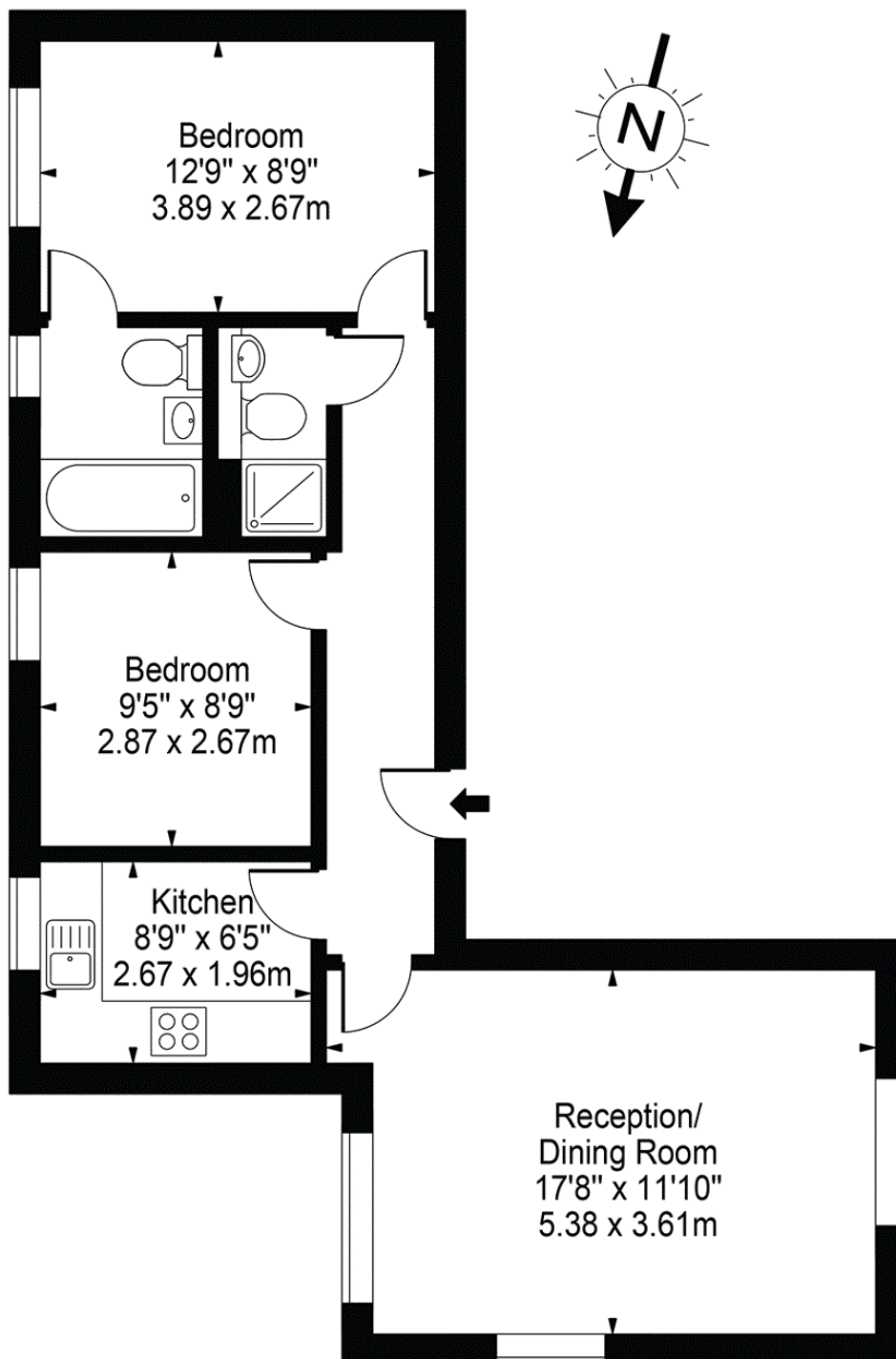


Beautiful and spacious, Art deco top floor two double bedroom apartment located in the heart of Ealing Broadway. This bright and airy property offers a large reception room with views over the grounds, a separate streamlined modern fully fitted kitchen, two double bedrooms (one with en-suite) and a three piece suite family bathroom. Private parking space.

Longfield House is in the heart of Ealing which is known for its leafy public spaces. Ealing Broadway is situated close by which offers a large array of shops, restaurants and cafes. Ealing Broadway Station is 0.36 miles away and contains London Underground, National Rail, Great Western Railway, and will have the future Crossrail. Uxbridge Road is a major road connecting Ealing, Hanwell, Acton, Shepherds Bush, Hayes and Southall. Three bus routes serve the entire road: 207, 427 and 607. To arrange a viewing, please call Rolfe East on 020 8567 2242.

## Longfield House, W5

Approx. Gross Internal Area 606 Sq Ft - 56.30 Sq M



Fifth Floor

For Illustration Purposes Only - Not To Scale Floor Plan by Mira Nikolova Photography

This floor plan should be used as a general outline for guidance only and does not constitute in whole or in part an offer or contract. Any intending purchaser or lessee should satisfy themselves by inspection, searches, enquiries and full survey as to the correctness of each statement. Any areas, measurements or distances quoted are approximate and should not be used to value a property or be the basis of any sale or let.

# Map

