



College Road, SE21
Offers in excess of £750,000

020 8702 8111
pedderproperty.com

pedder



In general

- An attractive three bedroom split-level maisonette
- Particularly spacious - 1,255 sq ft
- Master bedroom with en-suite bathroom
- Two further bedrooms, second bathroom
- Light and bright 20' x 18' lounge/dining room
- Kitchen/breakfast room, cloakroom
- Secure parking
- Well presented throughout
- Popular location close to transport links and schools

In detail

An attractive three bedroom split-level maisonette for sale situated in this very popular residential development set back from College Road in Dulwich.

The lovely apartment is presented in attractive decorative order and with a gross internal area of 1,255 sq ft offers exceptionally spacious living accommodation over two floors comprising of a master bedroom with en-suite bathroom, two further bedrooms, second bathroom, light and bright 20' x 18' lounge/dining room, kitchen/breakfast room and cloakroom. There is also secure underground parking within the development.

Dulwich Village is just a short walk with its outstanding schools, numerous shops, cafes and restaurants. The popular Dulwich Park, Belair Park and Dulwich Picture Gallery are also close-by. The nearest railway stations are Sydenham Hill (Victoria/Blackfriars) and North Dulwich (London Bridge). Crystal Palace centre is also close-by with numerous shopping and leisure facilities.

An internal viewing of this lovely apartment is advised.

EPC: D | Council Tax Band: E | Lease Term Remaining: 140 Years | SC: £700 | GR: £100 | BI: £709



Floorplan

College Road, SE21

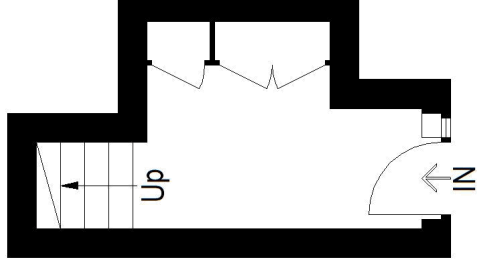
Approximate Gross Internal Area

Ground Floor = 6.5 sq m / 70 sq ft

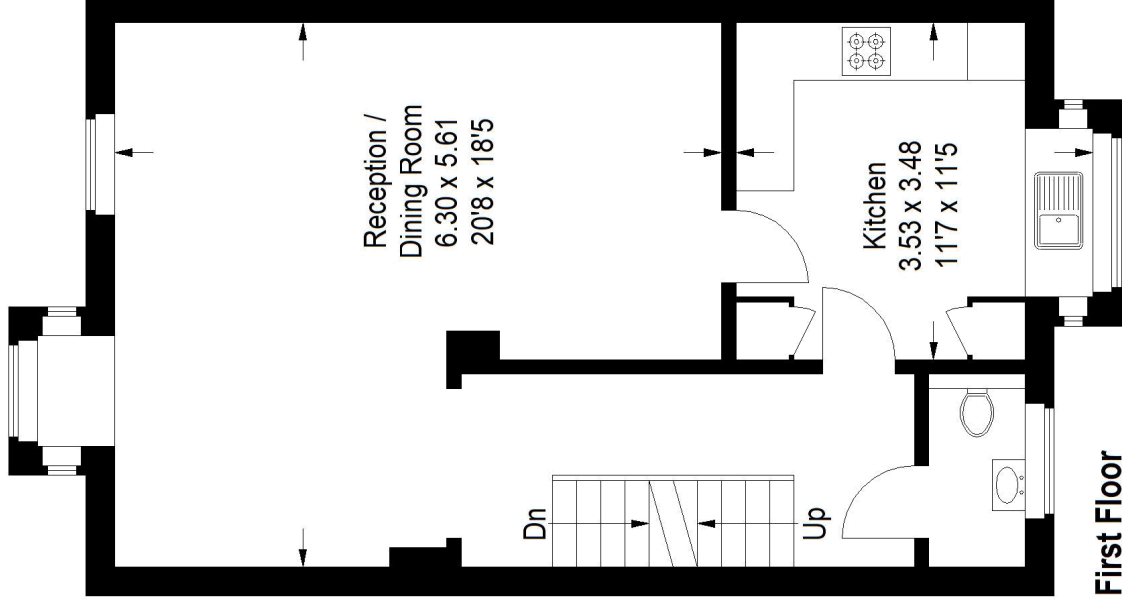
First Floor = 55.5 sq m / 597 sq ft

Second Floor = 54.6 sq m / 588 sq ft

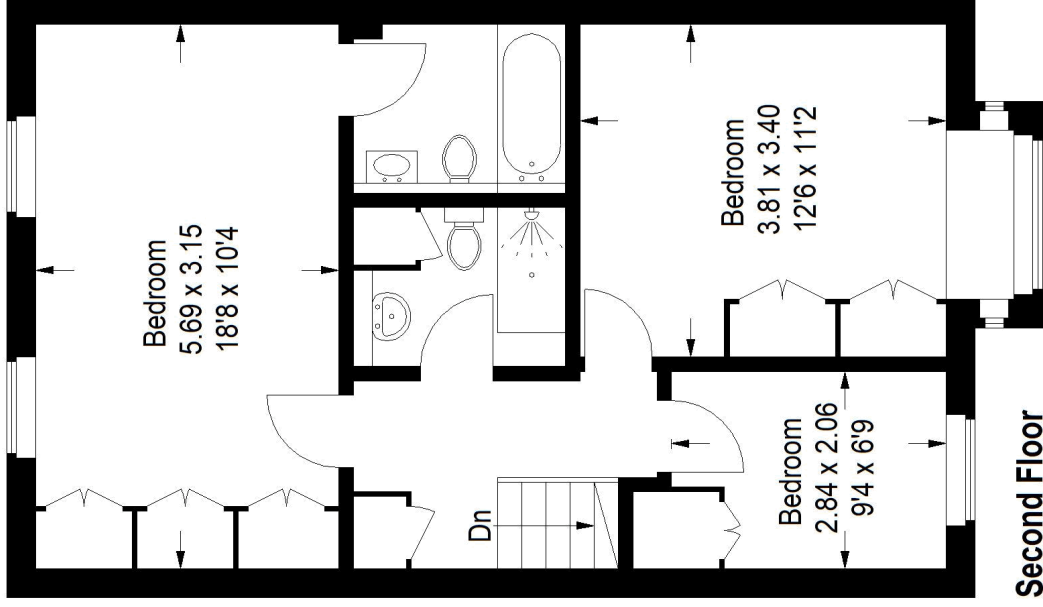
Total = 116.6 sq m / 1255 sq ft



Ground Floor



First Floor



Second Floor

Copyright www.pedderproperty.com © 2024

These plans are for representation purposes only as defined by RICS - Code of Measuring Practice. Not drawn to Scale. Windows and door openings are approximate. Please check all dimensions, shapes and compass bearings before making any decisions reliant upon them.