



Grange Court, SE26
£1,700 PCM

020 8702 8111
pedderproperty.com

pedder



In general

- Contemporary interior
- Available anytime from Mid November
- Brand new bathroom
- Communal garden
- Furnished or unfurnished, the landlord is flexible
- Redecorated and new flooring throughout

In detail

A stunning second floor period apartment available to rent within a substantial and imposing detached Victorian mansion in Sydenham Hill, close to Crystal Palace.

The apartment is very well presented with a stylish and contemporary interior and has accommodation comprising one double bedroom, large lounge/dining room, modern fitted kitchen and brand new bathroom. This beautiful building is set back from the road and there are private communal gardens to the rear and a front driveway providing off street parking. The flat further benefits from being freshly painted throughout and new flooring.

The property is well located for access to East Dulwich and Crystal Palace which offer a large variety of shopping facilities, pubs and bars. Dulwich Village is also easily accessible with its cafes, restaurants, Picture Gallery and golf course. The popular Sydenham and Dulwich Woods are just a short distance away.

The nearest railway stations are Sydenham Hill (London Victoria/London Blackfriars - Thameslink through Herne Hill) and Crystal Palace (London Bridge).

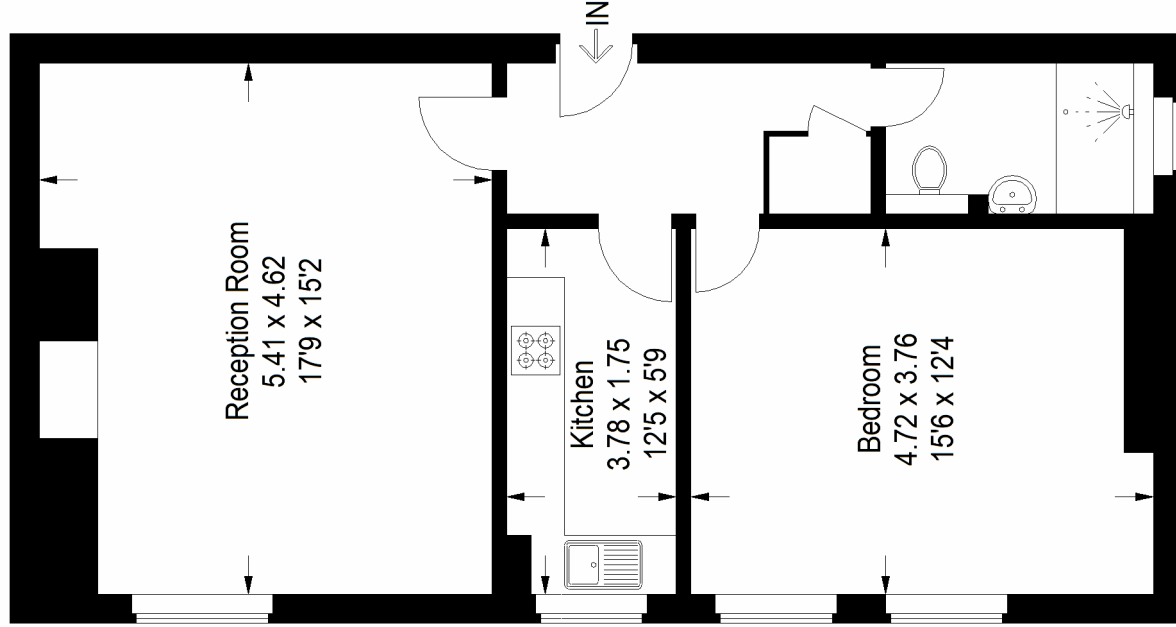
EPC: D | Council Tax Band: C | Offered Unfurnished | Available mid November | Holding Deposit: £392.30 | Security Deposit: £1,961.53



Floorplan

Grange Court, SE26

Approximate Gross Internal Area
62.6 sq m / 674 sq ft



Second Floor

Copyright www.pedderproperty.com © 2023
These plans are for representation purposes only as defined by RICS - Code of Measuring Practice. Not drawn to Scale. Windows and door openings are approximate. Please check all dimensions, shapes and compass bearings before making any decisions reliant upon them.

Score	Energy rating	Current	Potential
92+	A		
81-91	B		
69-80	C		
55-68	D	65 D	76 C
39-54	E		
21-38	F		
1-20	G		

Pedder Property Ltd trading as Pedder for themselves and for the vendor/landlord of this property whose agents they are, give notice that (1) these particulars do not constitute any part of an offer or contract, (2) all statements contained within these particulars are made without responsibility on the part of Pedder or the vendor/landlord, (3) whilst made in good faith, none of the statements contained within these particulars are to be relied upon as a statement of representation or fact, (4) any intending purchaser/tenant must satisfy him/herself by inspection or otherwise as to the correctness of each of the statements contained within these particulars, (5) the vendor/landlord does not make or give either Pedder or any person in their employment any authority to make or give representation or warranty whatsoever in relation to this property.