



Ridgemount Close, SE20
£1,750 PCM

0208 702 9333
pedderproperty.com

pedder



In general

- Split-level apartment
- Three bedrooms
- Separate kitchen
- Private garden
- Unfurnished
- Available end of April

In detail

A split-level three bedroom first floor maisonette with private garden in Anerley to rent.

Finished to a good standard throughout and comprising cosy reception room, separate kitchen and two bedrooms on the first floor, whilst the third bedroom is on the second floor (Top). Complete with small utility cupboard, wood flooring, double glazed windows, gas central heating, ample storage throughout and a private garden to the rear via side access downstairs.

Ridgemount Close, SE20 is ideally positioned just off Anerley Park offering easy access to the transport links of Penge West, Penge East and Crystal Palace train stations, as are the local bus routes into the surrounding area and beyond.

The local amenities and shops of Penge High Street and the ever-popular Triangle are close by also, as is the iconic Crystal Palace Park. The ideal rental for a couple or small family.

EPC: E | Council Tax: Bromley, Band C | Holding Deposit: £403.84 | Security Deposit: £2,019.23 | Offered unfurnished | Available end of April



Floorplan

Ridgemount Close, SE20

Approximate Gross Internal Area

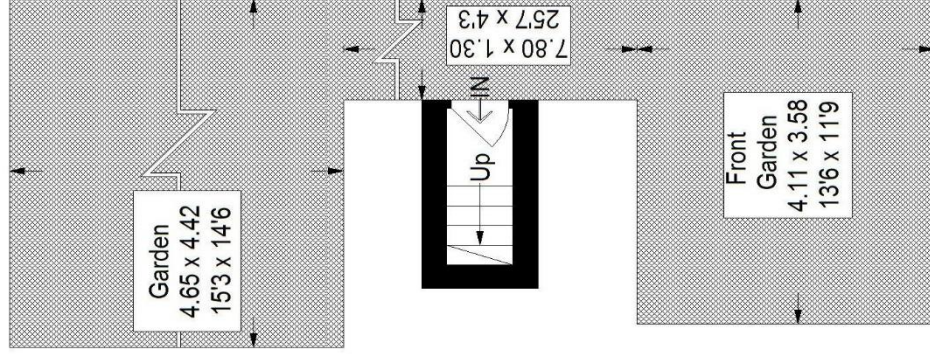
Ground Floor = 1.6 sq m / 17 sq ft

First Floor = 53.7 sq m / 578 sq ft

Second Floor (Excluding Eaves)

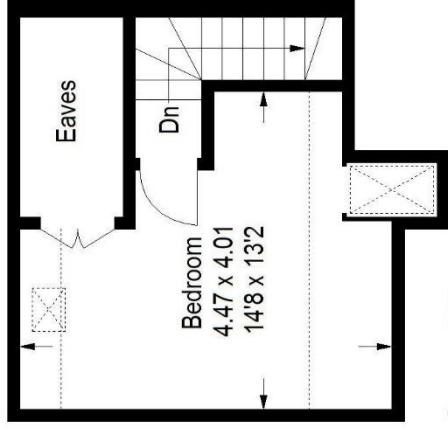
18.0 sq m / 194 sq ft

Total = 73.3 sq m / 789 sq ft

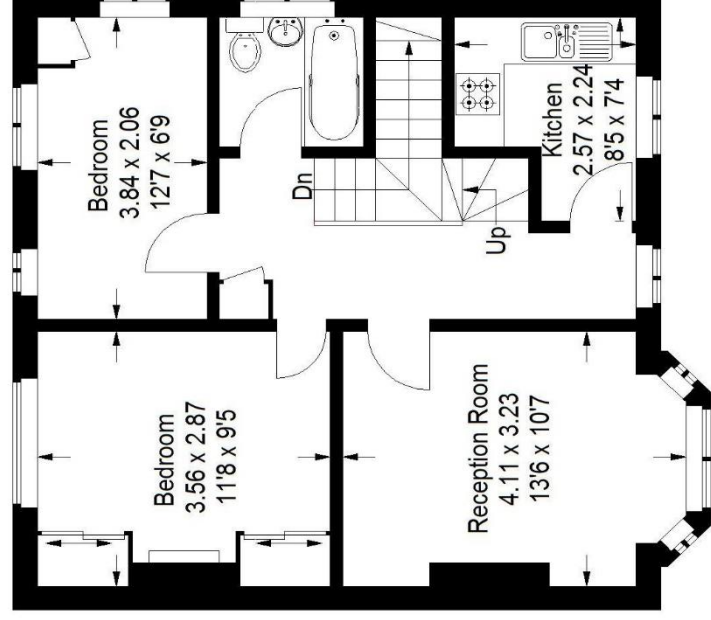


Ground Floor

 = Reduced headroom below 1.5 m / 5'0"



Second Floor



First Floor

Copyright www.pedderproperty.com © 2018

These plans are for representation purposes only as defined by RICS - Code of Measuring Practice. Not drawn to Scale. Windows and door openings are approximate. Please check all dimensions, shapes and compass bearings before making any decisions reliant upon them.