

# Waldemar Avenue, SW6

Fulham, London

 LAWSONRUTTER





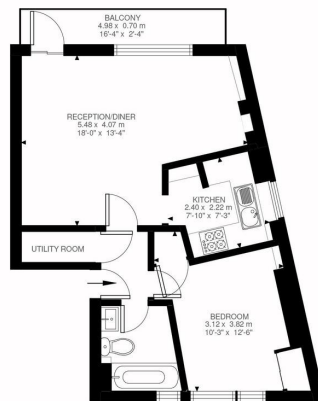
## Waldemar Avenue

London SW6

£450,000

Leasehold

A bright double-bedroom flat, with a large balcony, in this excellent location for the many shops, bars, and restaurants on the Fulham Road and within a short walk to Putney Bridge underground station (District Line). There is a generous reception dining room, which opens onto a large balcony, a modern kitchen, and bathroom; a good-size double bedroom with plenty of built-in storage, and a sizeable hallway cupboard too. The flat is also a stone's throw to Bishops Park and the Thames Path and is offered with a no onward chain and a long lease in excess of 940 years.



First Floor  
463 ft²

Waldemar Avenue, SW6  
Approximate Gross Internal Area  
43.05 SQ.M / 463 SQ.FT

All viewings by appointment through our  
**Fulham Office:**

T: 020 7731 3636

E: [fulham@lawsonrutter.com](mailto:fulham@lawsonrutter.com)

347 Fulham Palace Road, London  
SW6 6TB

In accordance with the Property Misdescription Act 1991, we wish to emphasise that the information given in these particulars is intended to help you decide whether you wish to view this property. Whilst every care is taken to ensure the accuracy of these particulars please note that all measurements are approximate and we are, for the accuracy of other information, reliant on what the seller has provided. We strongly recommend that you rely on your own inspections and those of your advisors to establish the details of any aspects which are of particular importance. Please note that we have not undertaken any survey of the property or the appliances within it and the buyer must rely on their own

