



Trinity Rise, SW2  
OIEO £1,100,000

0208 702 9555  
[pedderproperty.com](https://pedderproperty.com)

**pedder**





# In general

- Two reception rooms
- Third reception/dining room
- Stylish kitchen
- Near to Brockwell Park
- Close to transport links

# In detail

We are delighted to offer to the market this five bedroom, two bathroom terraced house for sale on Trinity Rise, a popular residential road close to the vast expanse of Brockwell Park.

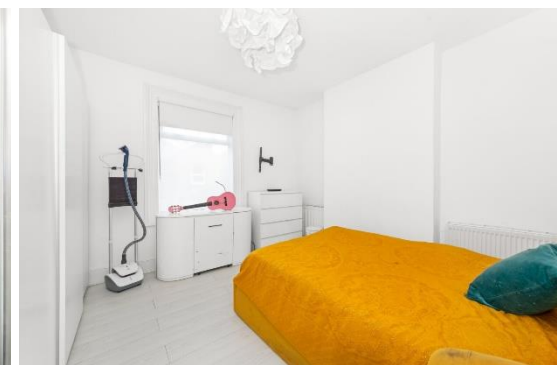
The property is neutrally decorated throughout and offers a host of original features to include tessellated tiled floor to the entrance hall, picture rails, dado rails and cornicing.

The accommodation comprises front reception room with feature fireplace and bay window to the front, second reception/dining room, kitchen with a modern range of wall & base units and built in oven/hob/microwave and door to utility, the rear reception also has a feature fireplace and sliding doors onto the rear garden.

On the first floor are four bedrooms and the family bathroom, and the top floor comprises a double bedroom and en suite bathroom.

There is a paved rear garden with shrub borders. Central Herne Hill offers a popular selection of restaurant & shopping amenities and Herne Hill railway station (Victoria, Thameslink, Blackfriars). Tulse Hill station also serves the location.

EPC: D | Council Tax Band: E





# Floorplan

## Trinity Rise, SW2

Approximate Gross Internal Area  
(Excluding Eaves)

176.1 sq m / 1896 sq ft



Copyright www.pedderproperty.com © 2024

These plans are for representation purposes only as defined by RICS - Code of Measuring Practice. Not drawn to Scale. Windows and door openings are approximate. Please check all dimensions, shapes and compass bearings before making any decisions reliant upon them.

Pedder Property Ltd trading as Pedder for themselves and for the vendor/landlord of this property whose agents they are, give notice that (1) these particulars do not constitute any part of an offer or contract, (2) all statements contained within these particulars are made without responsibility on the part of Pedder or the vendor/landlord, (3) whilst made in good faith, none of the statements contained within these particulars are to be relied upon as a statement of representation or fact, (4) any intending purchaser/tenant must satisfy him/herself by inspection or otherwise as to the correctness of each of the statements contained within these particulars, (5) the vendor/landlord does not make or give either Pedder or any person in their employment any authority to make or give representation or warranty whatsoever in relation to this property.

