



Lawrie Park Road, SE26
£1,750 PCM

0208 702 9777
pedderproperty.com

pedder



In general

- Victorian split level conversion
- Light filled apartment
- Two double bedrooms
- Generous reception room
- Available now
- Off street parking
- Unfurnished

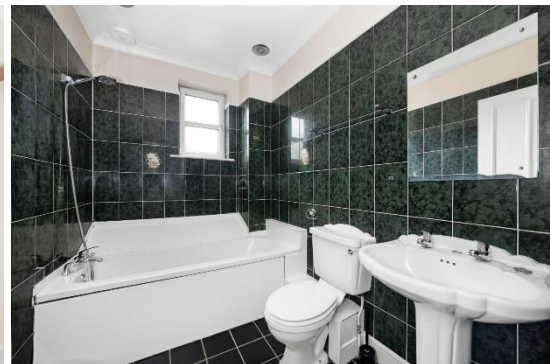
In detail

A superb Victorian conversion flat with off street parking, available to rent in Sydenham, close to Crystal Palace Park, great transport links and a wealth of shopping facilities.

Offering sizeable living and entertaining space, the property is generously proportioned throughout. Accommodation comprises a large reception providing good lounge and dining space with three large windows, high ceilings and a feature fireplace. The kitchen is well equipped with ample storage and again, higher than average ceilings. Two double bedrooms are arranged to the rear whilst the master benefits from fitted storage.

Lawrie Park Road is very close to Sydenham and Penge East rail, a number of coffee shops, restaurants and Crystal Palace Park.

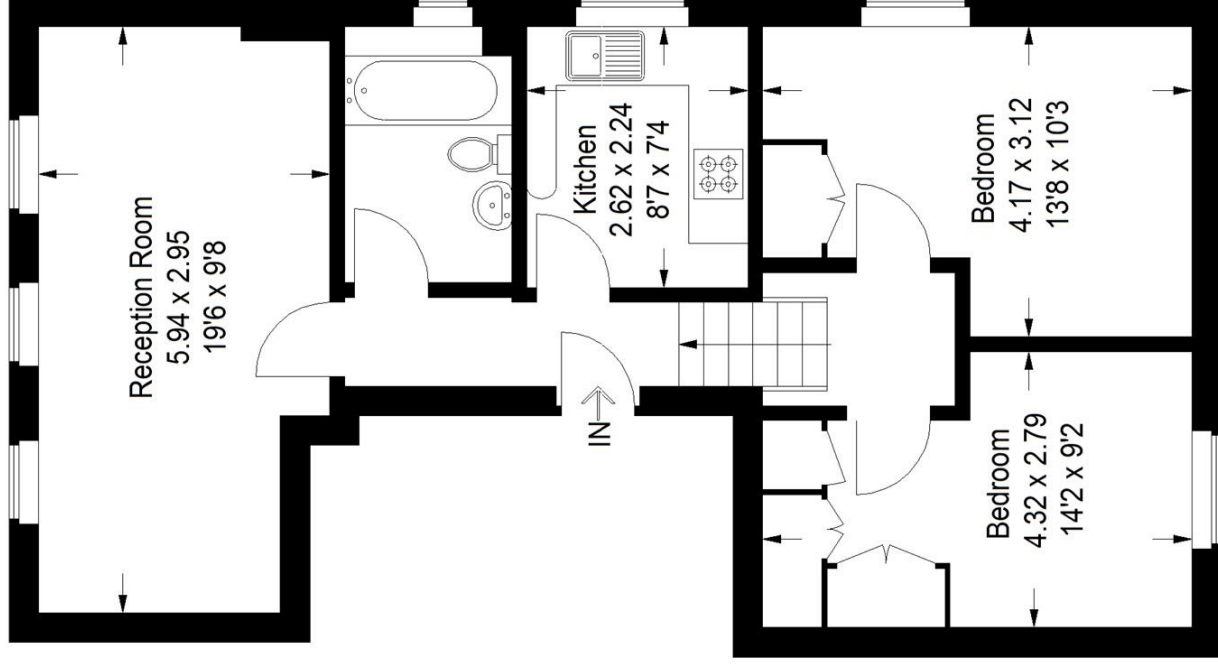
EPC: C | Council Tax Band: C | Available now | Offered unfurnished | HD: £403.84 | SD: £2,019.23



Floorplan

Lawrie Park Road, SE26

Approximate Gross Internal Area
59.3 sq m / 638 sq ft



First Floor

Copyright www.pedderproperty.com © 2024
 These plans are for representation purposes only as defined by
 RICS - Code of Measuring Practice. Not drawn to Scale. Windows
 and door openings are approximate. Please check all dimensions,
 shapes and compass bearings before making any decisions reliant
 upon them.

Score	Energy rating	Current	Potential
92+	A		
81-91	B		
69-80	C	75 C	80 C
55-68	D		
39-54	E		
21-38	F		
1-20	G		

Pedder Property Ltd trading as Pedder for themselves and for the vendor/landlord of this property whose agents they are, give notice that (1) these particulars do not constitute any part of an offer or contract, (2) all statements contained within these particulars are made without responsibility on the part of Pedder or the vendor/landlord, (3) whilst made in good faith, none of the statements contained within these particulars are to be relied upon as a statement of representation or fact, (4) any intending purchaser/tenant must satisfy him/herself by inspection or otherwise as to the correctness of each of the statements contained within these particulars, (5) the vendor/landlord does not make or give either Pedder or any person in their employment any authority to make or give representation or warranty whatsoever in relation to this property.