



Orchard Grove, SE20
£290,000

0208 702 9333
pedderproperty.com

pedder



In general

- One double bedroom
- Ground Floor
- Recently upgraded
- No onward chain
- Convenient location

In detail

A ground floor one bedroom purpose built apartment with direct access to outside space available for sale conveniently located for transport links and Crystal Palace Park.

The ground floor property has recently been upgraded including new kitchen, bathroom, flooring, radiators, double glazing and refreshed paintwork. Comprising of a 17'1 reception room with direct access to outside space, modern kitchen and bathroom and spacious bedroom.

Further benefits include, sizeable storage cupboard housing new water heater, long lease and no onward chain.

Orchard Grove is located off Thicket Road and is ideally located for 200 acres of parkland and is well placed for the transport links of Penge East/West, Anerley, and Crystal Palace stations. The many amenities, boutique shops and restaurants of the Triangle are also a short stroll away.

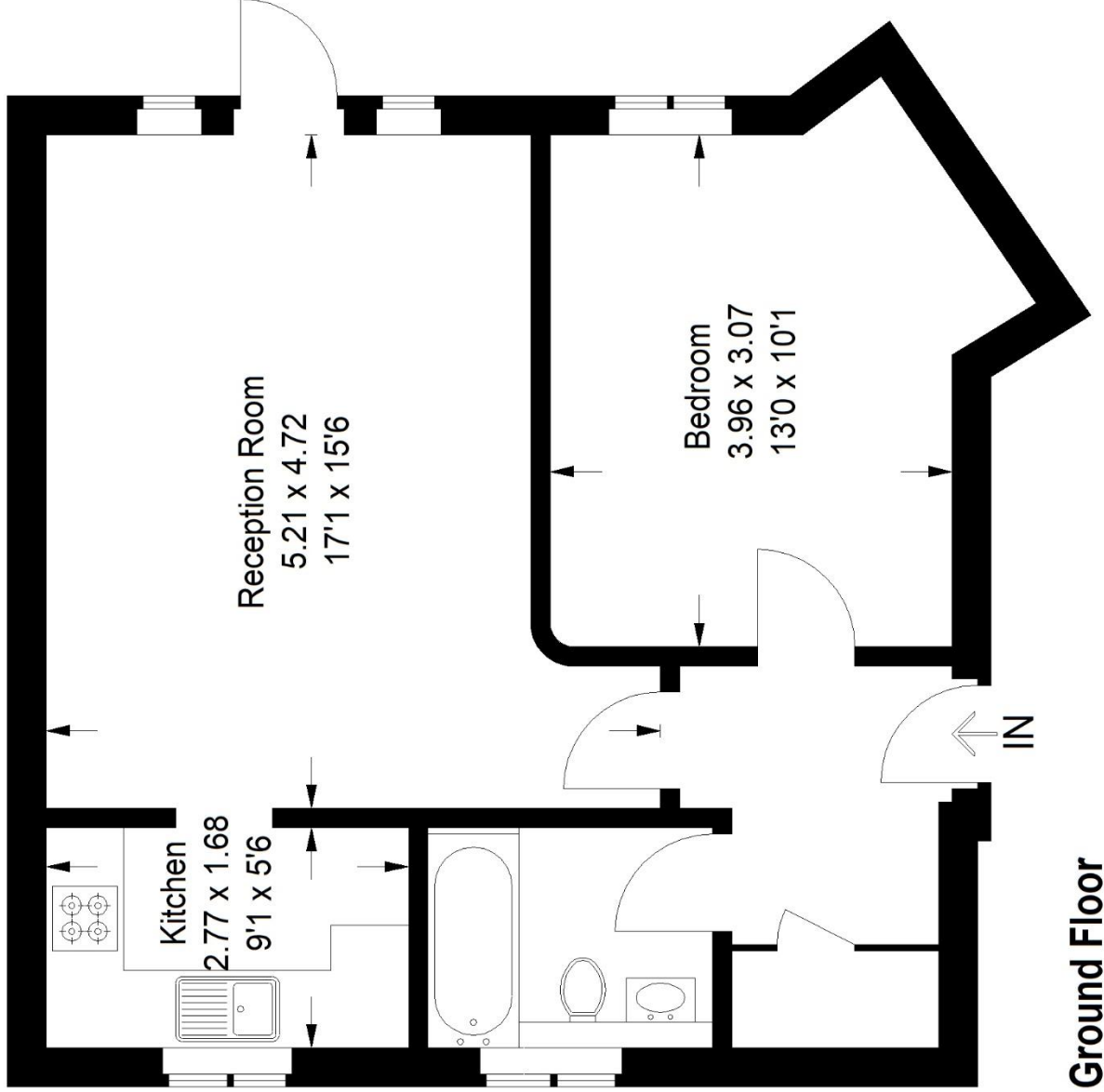
EPC: D | Council Tax Band: C | Lease: 155 years remaining | SC £130PM | GR: N/A | BI: TBC



Floorplan

Orchard Grove, SE20

Approximate Gross Internal Area
50.1 sq m / 539 sq ft



Ground Floor

Copyright www.pedderproperty.com © 2024

These plans are for representation purposes only as defined by RICS - Code of Measuring Practice. Not drawn to Scale. Windows and door openings are approximate. Please check all dimensions, shapes and compass bearings before making any decisions reliant upon them.

Score	Energy rating	Current	Potential
92+	A		
81-91	B		
69-80	C		
55-68	D	65 D	74 C
39-54	E		
21-38	F		
1-20	G		

Pedder Property Ltd trading as Pedder for themselves and for the vendor/landlord of this property whose agents they are, give notice that (1) these particulars do not constitute any part of an offer or contract, (2) all statements contained within these particulars are made without responsibility on the part of Pedder or the vendor/landlord, (3) whilst made in good faith, none of the statements contained within these particulars are to be relied upon as a statement of representation or fact, (4) any intending purchaser/tenant must satisfy him/herself by inspection or otherwise as to the correctness of each of the statements contained within these particulars, (5) the vendor/landlord