



Sunnydene Street, SE26  
£2,150 PCM

0208 702 9777  
[pedderproperty.com](http://pedderproperty.com)

**pedder**



# In general

- Pretty Edwardian house
- Through reception
- Two double bedrooms
- Stripped wood flooring
- Close to local amenities
- Private garden
- Ample storage
- Offered unfurnished
- Available August

# In detail

A charming and characterful two double bedroom Edwardian house with private garden, located on a lovely residential street close to a wealth of amenities and transport links.

This welcoming home provides a warm, light filled, comfortable space, perfect for a couple or small family.

Comprising a through reception with original wood flooring, feature fireplace and shutters, the kitchen includes plenty of storage, high quality fittings and a range cooker.

Upstairs are two double bedrooms and a contemporary bathroom.

To the rear is a landscaped garden with established beds and a sweet patio area.

Every element of this property has been finished to a high standard and should be viewed to be fully appreciated.

EPC: D | Council Tax: C | Offered unfurnished | Available August | HD: £496.15 | SD: £2,480.76

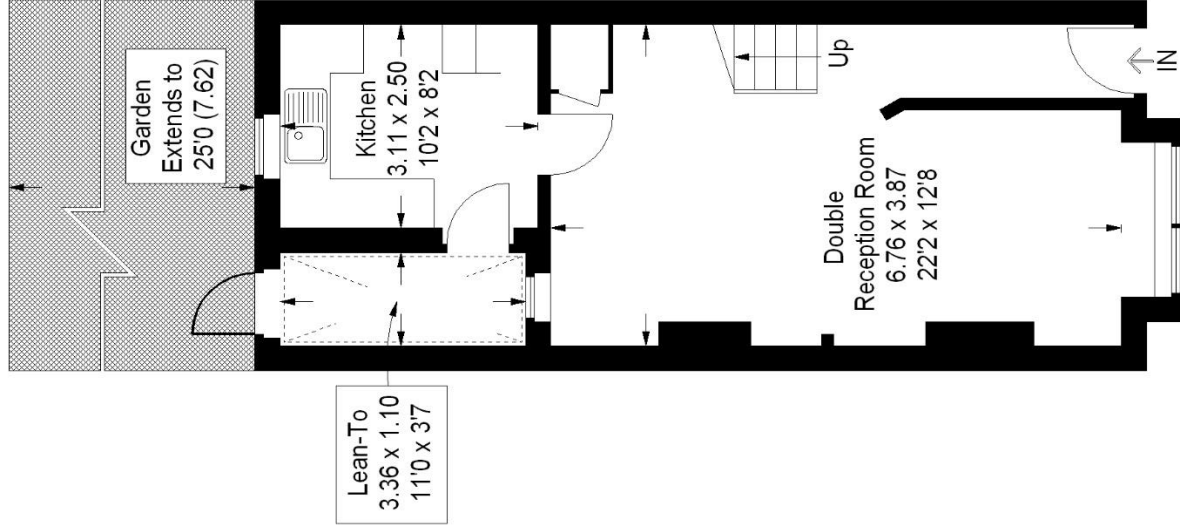


# Floorplan

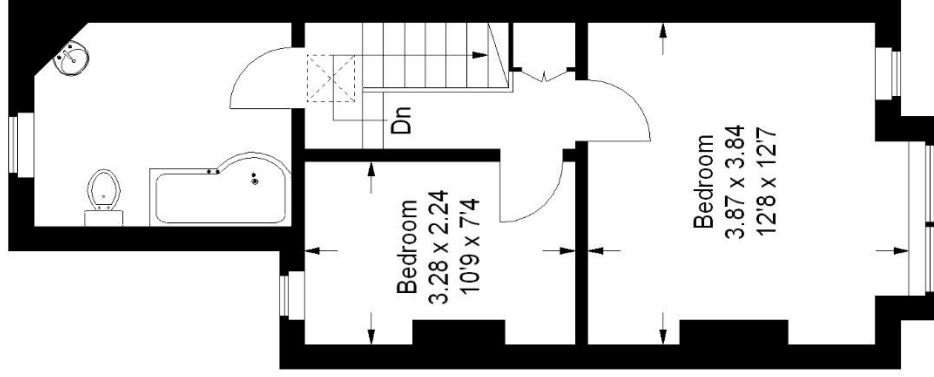
Sunnydene Street, SE26



Approximate Gross Internal Area  
77 sq m / 829 sq ft



Ground Floor



First Floor

Copyright www.pedderproperty.com © 2014  
These plans are for representation purposes only as defined by RICS - Code of Measuring Practice. Not to Scale

Score	Energy rating	Current	Potential
92+	A		
81-91	B		
69-80	C		
55-68	D	66 D	97 B
39-54	E		
21-38	F		
1-20	G		

Pedder Property Ltd trading as Pedder for themselves and for the vendor/landlord of this property whose agents they are, give notice that (1) these particulars do not constitute any part of an offer or contract, (2) all statements contained within these particulars are made without responsibility on the part of Pedder or the vendor/landlord, (3) whilst made in good faith, none of the statements contained within these particulars are to be relied upon as a statement of representation or fact, (4) any intending purchaser/tenant must satisfy him/herself by inspection or otherwise as to the correctness of each of the statements contained within these particulars, (5) the vendor/landlord does not make or give either Pedder or any person in their employment any authority to make or give representation or warranty whatsoever in relation to this property.