



Thicket Road, SE20
£300,000

0208 702 9333
pedderproperty.com

pedder



In general

- A share of the freehold
- Close to Crystal Palace Park
- Pleasant elevated views
- Tastefully upgraded by the current owners
- Highly regarded location
- Nearby multiple transport links

In detail

A characterful super-studio positioned on a very popular road nearby Crystal Palace Park.

This light-filled accommodation has been modified by the current owners to make the absolute most of the available space, creating well designed storage solutions and providing a warm, inviting and comfortable home. There are large sash windows in the living and sleeping area which afford pleasant elevated views, and a segmented kitchen / dining area allows for entertaining. High ceilings add to a sense of space, whilst the entrance lobby is big enough to offer a place for a home office. The bathroom has been tastefully upgraded and provides access to a large loft storage level. The property is also to be sold with the benefit of a share of the freehold.

The residents of Thicket Road enjoy access to a wealth of transport options including Anerley, Penge East / West, and Crystal Palace stations. Also, plenty of shopping and leisure facilities at the Crystal Palace Triangle and the High Street. In our opinion, an ideal first time or investment purchase.

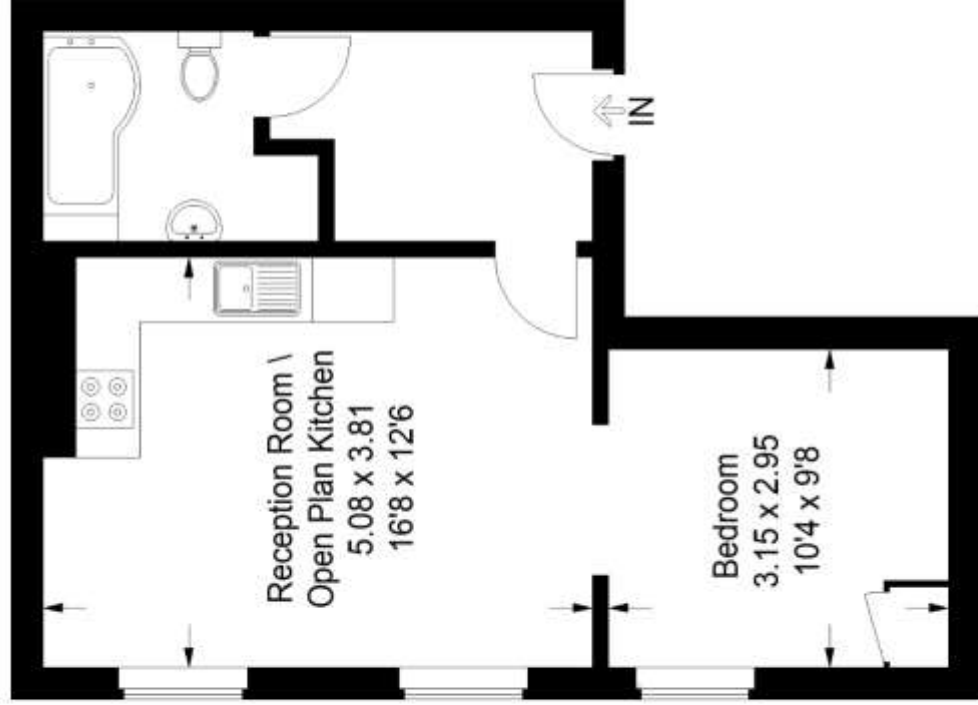
EPC: D | Council Tax Band: B | Lease 989 Years remaining | SC: £80pm | GR: £0 | BI: Incl in SC



Floorplan

Thicket Road, SE20

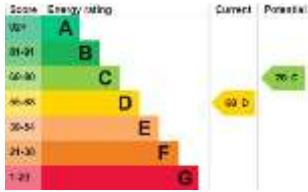
Approximate Gross Internal Area
40.0 sq m / 431 sq ft



First Floor

Copyright www.pedderproperty.com © 2023

These plans are for representation purposes only as defined by RICS - Code of Measuring Practice. Not drawn to Scale. Windows and door openings are approximate. Please check all dimensions, shapes and compass bearings before making any decisions reliant upon them.



Pedder Property Ltd trading as Pedder for themselves and for the vendor/landlord of this property whose agents they are, give notice that (1) these particulars do not constitute any part of an offer or contract, (2) all statements contained within these particulars are made without responsibility on the part of Pedder or the vendor/landlord, (3) whilst made in good faith, none of the statements contained within these particulars are to be relied upon as a statement of representation or fact, (4) any intending purchaser/tenant must satisfy him/herself by inspection or otherwise as to the correctness of each of the statements contained within these particulars, (5) the vendor/landlord does not make or give either Pedder or any person in their employment any authority to make or give representation or warranty whatsoever in relation to this property.