



Tannoy Square, SE27  
£349,950

020 8702 8111  
[pedderproperty.com](https://www.pedderproperty.com)

**pedder**







# In general

- A modern light and bright purpose built apartment
- Spacious and well presented
- Two double bedrooms
- Lounge/dining room open-plan
- Fitted kitchen
- Modern bathroom
- Convenient location close to transport links and local schools
- Offered with no onward chain

# In detail

A modern light and bright purpose built apartment set within this attractive development on the border of West Dulwich and West Norwood.

The property has been modernised and offers spacious and well presented accommodation comprising two double bedrooms, spacious lounge/dining room open-plan to a fitted kitchen and modern bathroom. From the lounge, double doors give access to a Juliet balcony. Externally the property is set within attractive communal gardens.

Tannoy Square is well located for access to West Dulwich, West Norwood and Crystal Palace with their numerous shops, cafes, restaurants and leisure facilities. Excellent rail links to central London are from nearby West Dulwich (London Victoria/ Blackfriars), West Norwood (London Bridge/Victoria) and Gipsy Hill (London Bridge/Victoria). Bus services to central London run along nearby South Croxted Road.

Offered with no onward chain.

EPC: C | Council Tax Band: C | Lease Term Remaining: TBC | SC: £ | GR: TBC | BI: TBC

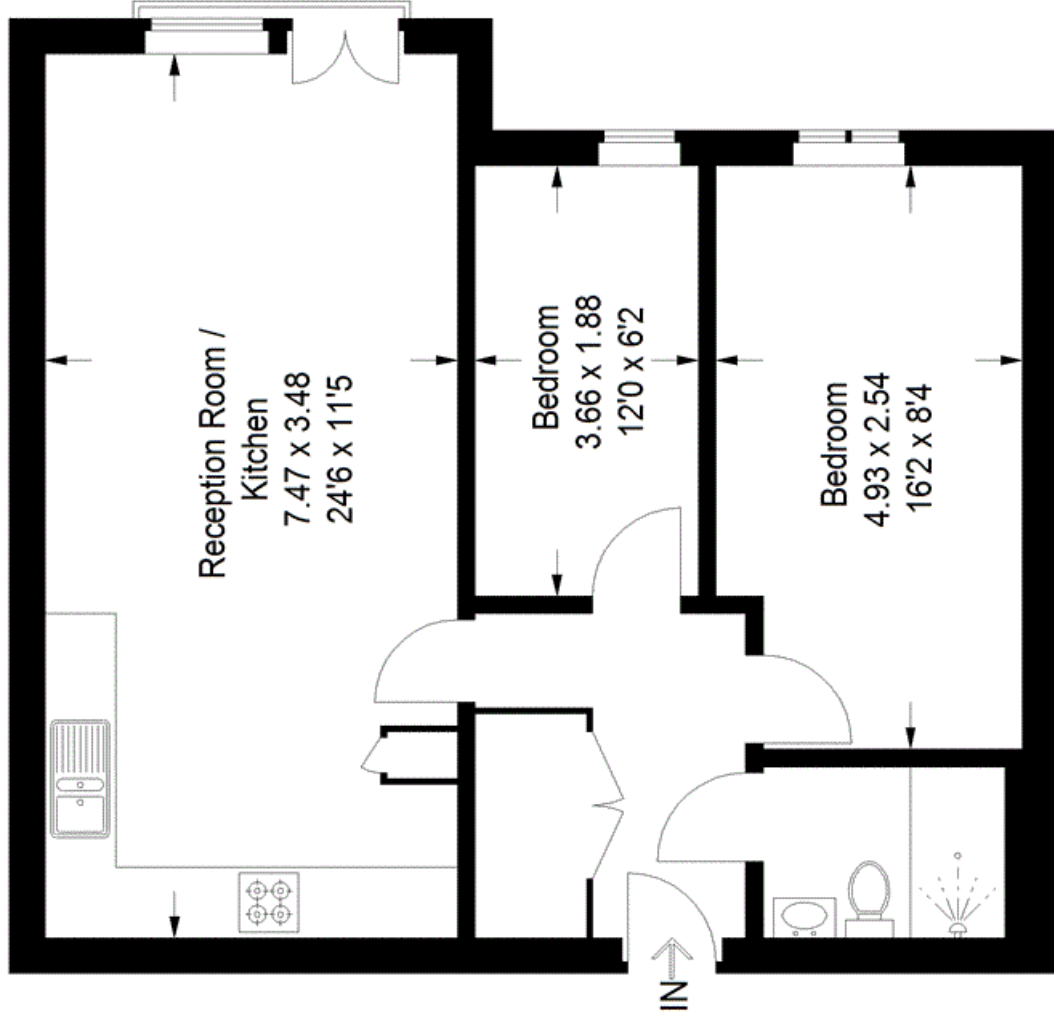


# Floorplan

## Tannoy Square, SE27

Approximate Gross Internal Area

58.1 sq m / 625 sq ft



## Third Floor

Copyright [www.pedderproperty.com](http://www.pedderproperty.com) © 2022  
These plans are for representation purposes only as defined by RICS - Code of Measuring Practice. Not drawn to Scale. Windows and door openings are approximate. Please check all dimensions, shapes and compass bearings before making any decisions reliant upon them.